

070305



To: Chairperson and Transportation and Safety Committee

Through: Wes Anderson, Director of Public Works

From: David A. Dratnol, P.E., Village Engineer

Date: April 16, 2007

Subject: No parking on the Dead-end of South Broadway

It was brought to the attention of the Village that vehicles were parking at the dead end of South Broadway east of School St. When vehicles park in this area they not only block Waste Management access to the container for 300 South Westmore/Meyers Rd., but also block the turn-around thereby causing vehicles to back down to School St.

There are two areas that need to be posted "No Parking":

1. The east curb at the dead end of South Broadway east of School St.
2. The north turn-around at the dead end of South Broadway east of School St

No Parking signs were installed under the authorization for temporary or emergency placement of traffic control regulation or device.

Please see the attached aerial image for further reference.

This item will be on the May 7, 2007 Transportation and Safety Committee agenda. The meeting is held at the Village Hall in the Community Room at 7:00 PM. This is a public meeting and public participation is encouraged.

JJ

cc: Kenneth Florey, Trustee, District 5



239
232
237
246
247

ROADWAY
IPP
ILLINOIS PRAIRIE PATH

815
818
816
823
827
831
836
840
800
809

309
328
32

300
921
925
917
921
925

824
814
824
832
855
800
808

309
328
32

916
440
310
314
310
310

325
330
335
340

309
328
32

325
331
335
343

324
324
330
335
340

309
328
32

324
324
330
336
340

324
330
335
340

309
328
32

324
324
330
336
340

324
330
335
340

WESTMORE-MEYERS RD

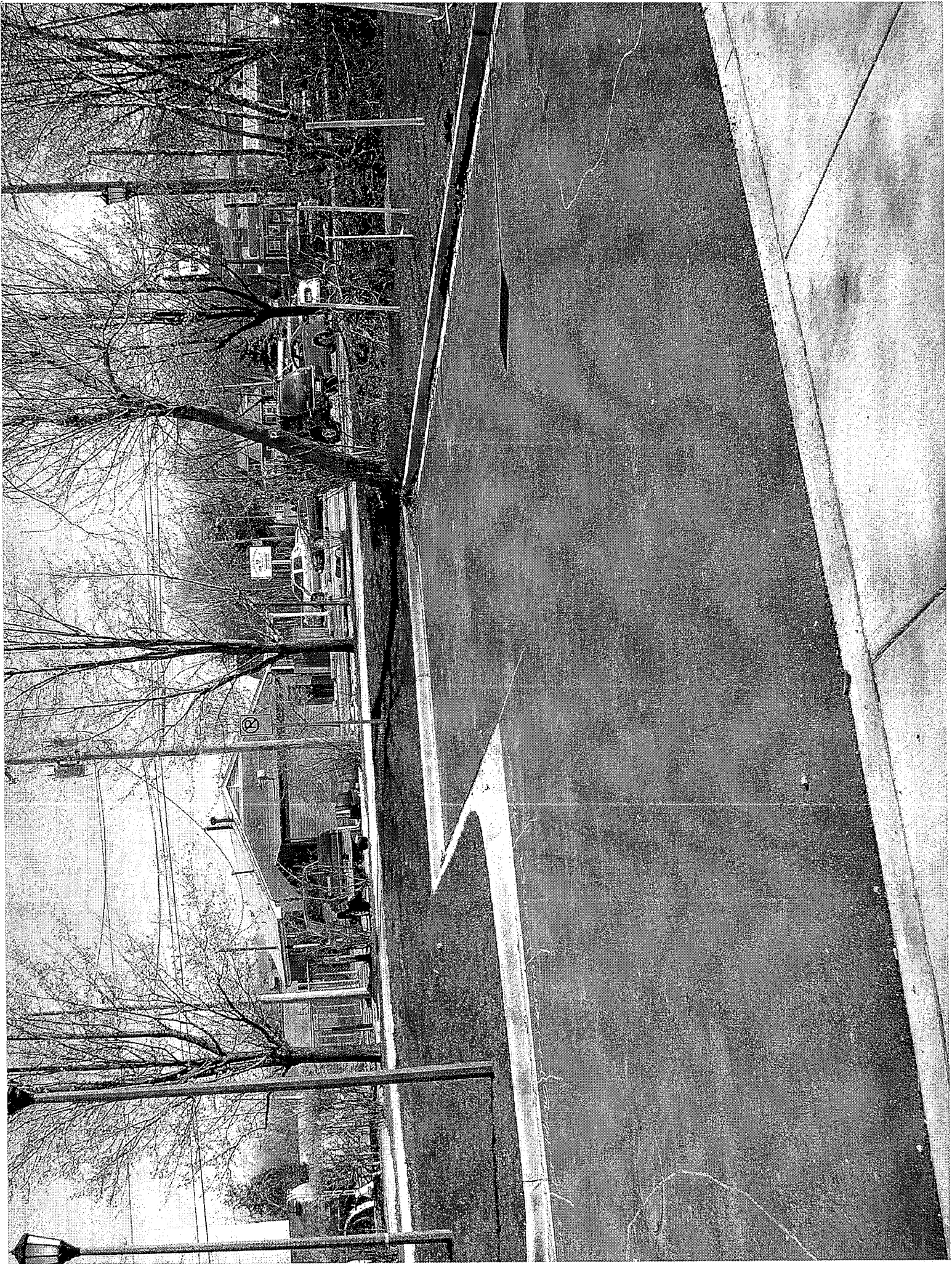
WESTMORE-MEYERS RD

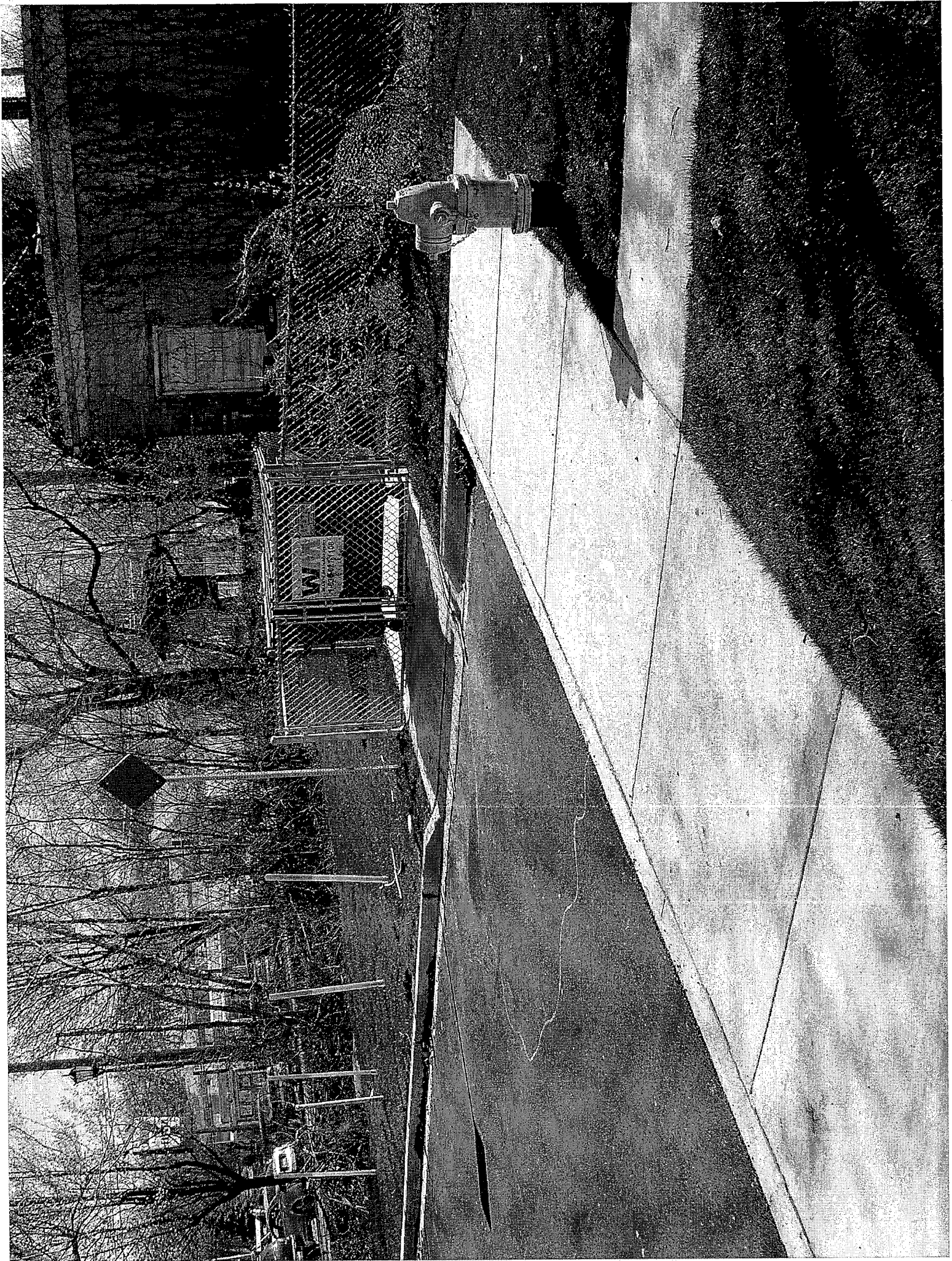
SCHOOL AV

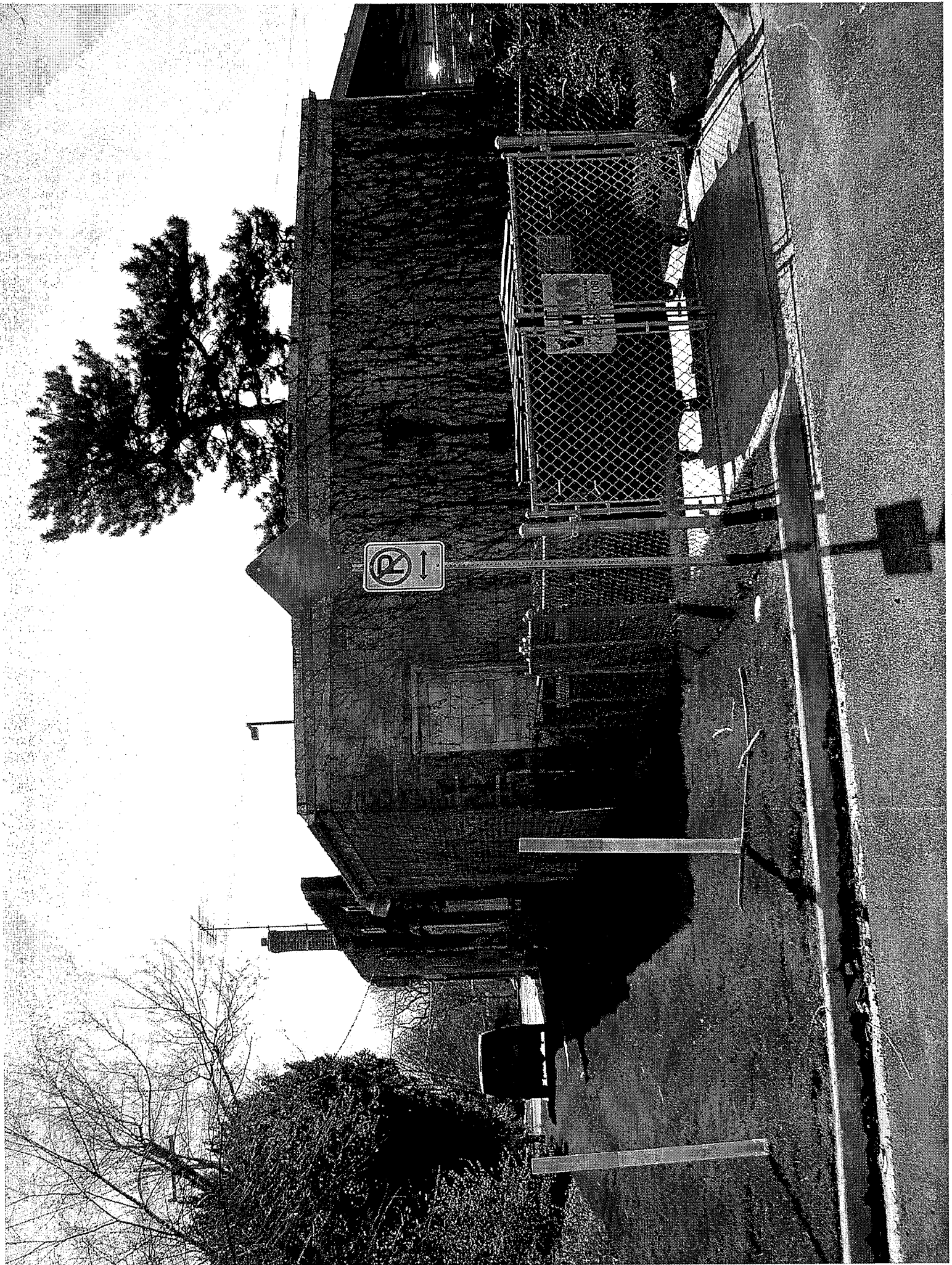
DIVISION ST

DIVISION ST

DIVISION ST







VILLAGE OF LOMBARD

**AUTHORIZATION FOR TEMPORARY OR EMERGENCY PLACEMENT OF
TRAFFIC CONTROL REGULATION OR DEVICE**

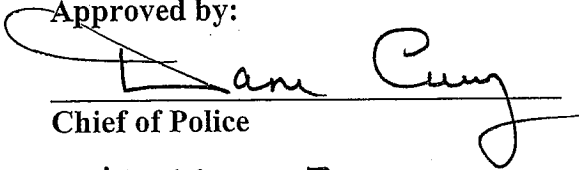
Pursuant to the Village of Lombard Traffic Code, section 10-3-8, the below listed temporary or experimental regulation is authorized as an emergency or special condition: (please specify)

It was brought to the attention of the Village that vehicles were parking at the dead end of South Broadway east of School St. When vehicles park in this area they block access to the garbage container for 300 South Westmore/Meyers Rd. When a vehicle parks in this area the turn-around is blocked and vehicles must back down to School St.

There are two areas that need to be posted "No Parking":

1. The east curb at the dead end of South Broadway east of School St.
2. The north turn-around at the dead end of South Broadway east of School St.

Approved by:



Chief of Police

4-16-07

Date



Director of Public Works

18 Apr 07

Date

This temporary or experimental regulation shall not be in effect for more than thirty (30) days after placement.

cc: Village Manager
Village President and Board of Trustees
Traffic and Safety Committee