

GENERAL NOTES:

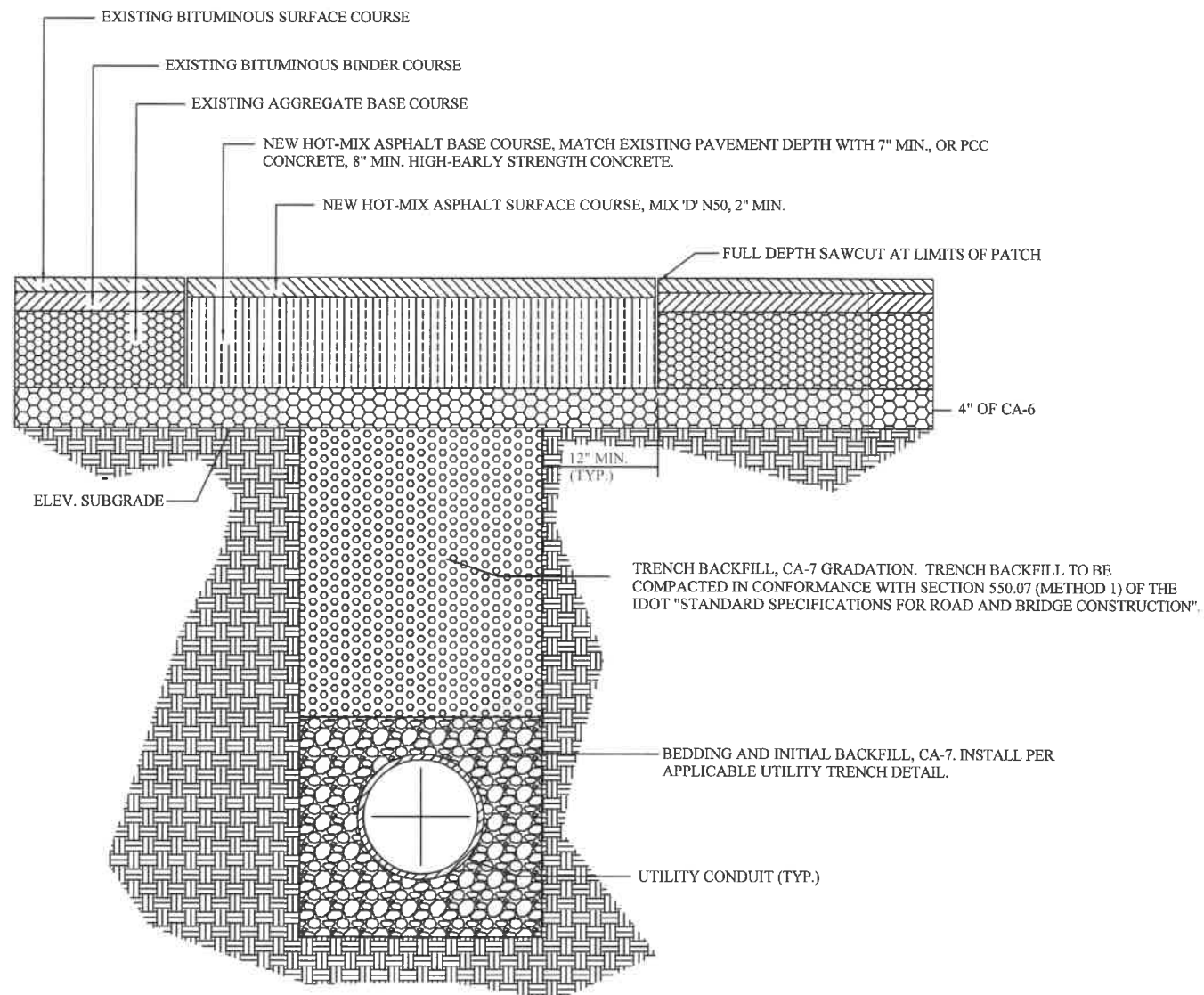
1. CONCRETE SHALL BE CLASS SI
2. MINIMUM SIDEWALK THICKNESS SHALL BE FIVE INCHES (5").
3. SIDEWALK THICKNESS ACROSS DRIVEWAYS SHALL BE SIX INCHES (6") MINIMUM FOR RESIDENTIAL DRIVEWAYS, AND EIGHT INCHES (8") MINIMUM FOR NON-RESIDENTIAL DRIVEWAYS
4. MAXIMUM LONGITUDINAL SLOPE SHALL NOT EXCEED 6% (16:1)
5. MAXIMUM TRANSVERSE SLOPE SHALL NOT EXCEED 2% (1/4" FT.)
6. A TWO INCH (2") MINIMUM AGGREGATE SUB-BASE (CA-6 GRADATION) SHALL BE PROVIDED
7. AGGREGATE SUB-BASE COURSE SHALL BE MECHANICALLY COMPACTED.
8. ALL SIDEWALK SHALL BE PROMPTLY BACKFILLED AND PROTECTED FROM DAMAGE.

REV.:	DRG	REV.:	02-05-15
REV.:	ERH	REV.:	03-26-99
DRAWN BY:	VJGL	DATE:	02-16-98
H:\HOME\LAOANG\DRAWINGS\DETAILS\CH400\PAVE-2.DWG			

SIDEWALK

VILLAGE OF LOMBARD

PAVEMENT 2



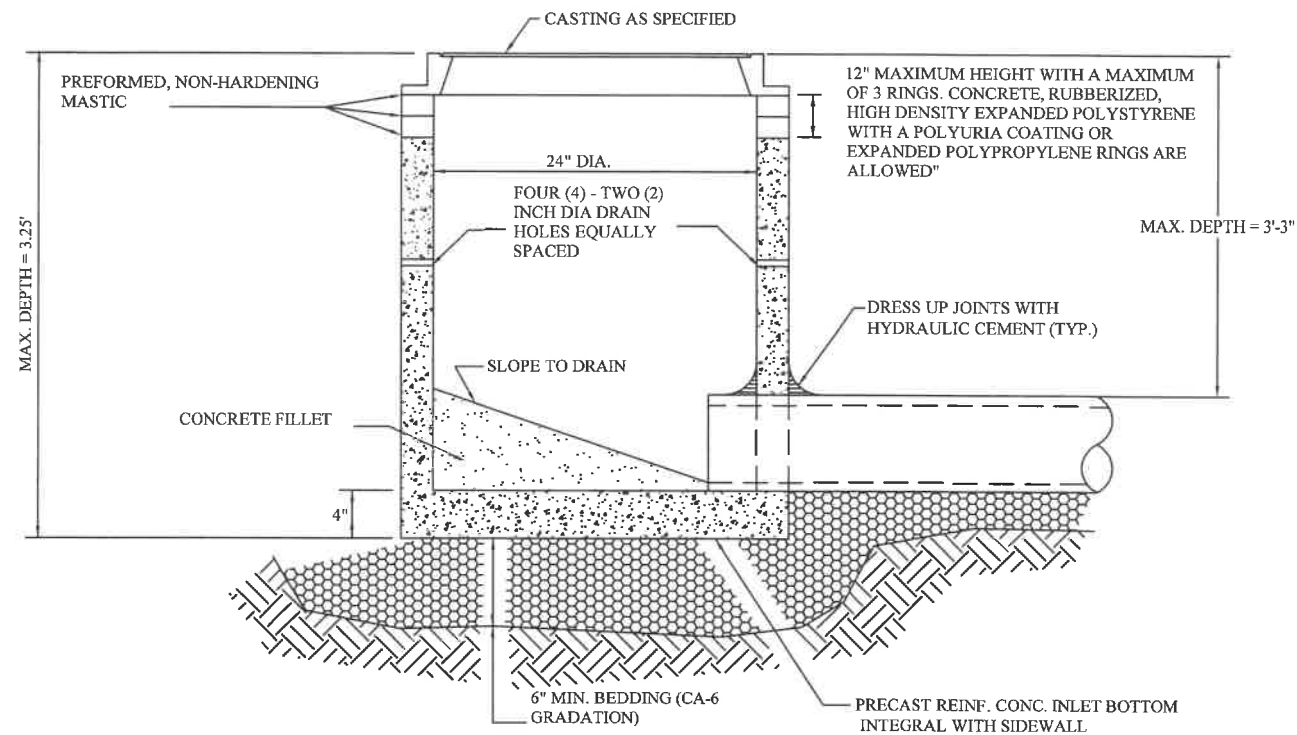
GENERAL NOTES:

1. PAVEMENT SHALL NOT BE OPENED WITHOUT FIRST RECEIVING A PERMIT FROM THE DEPARTMENT OF PUBLIC WORKS.
2. THE TRENCH SHALL BE BACKFILLED WITH AGGREGATE (CA-6 GRADATION) AND COMPACTED TO 95% OF THE STANDARD PROCTOR DENSITY. TRENCH SPOIL OR EXCAVATED MATERIAL SHALL BE DISPOSED OF BY THE CONTRACTOR AT HIS EXPENSE.
3. PRIOR TO PAVING, THE EXPOSED EDGES OF ALL EXISTING PAVEMENT SHALL BE SAWCUT FULL DEPTH TO PROVIDE A SMOOTH, CLEAN VERTICAL EDGE, FREE OF LOOSE MATERIAL.
4. EXCAVATIONS SHALL BE PROTECTED BY BARRICADES WITH FLASHING LIGHTS, AT LOCATIONS WHERE ADJUSTMENTS ARE LOCATED IN TRAVEL LANES, A ONE-INCH (1") STEEL PLATE SHALL BE PLACED AND MAINTAINED BY THE CONTRACTOR UNTIL THE SURFACE RESTORATION IS COMPLETE. THE PLATE SHALL BE PROTECTED FROM SLIDING AND TRANSITIONED WITH BITUMINOUS RAMPS AS REQUIRED. BARRICADES AND STEEL PLATES SHALL BE PRESENT AT THE WORK SITE PRIOR TO THE ROAD OPENING.
5. MINIMUM WIDTH OF A PATCH SHALL BE 4.0 FEET. ALL PATCHES SHALL BE FULL-DEPTH IN A RECTANGULAR SHAPE.

REV.:	JKB	REV.:	4-23-18
REV.:	DRG	REV.:	4-20-17
REV.:	DRG	REV.:	5-4-15
DRAWN BY:	VJGL	DATE:	2-16-98

FLEXIBLE PAVEMENT
UTILITY TRENCH

VILLAGE OF LOMBARD
PAVEMENT 11



GENERAL NOTES:

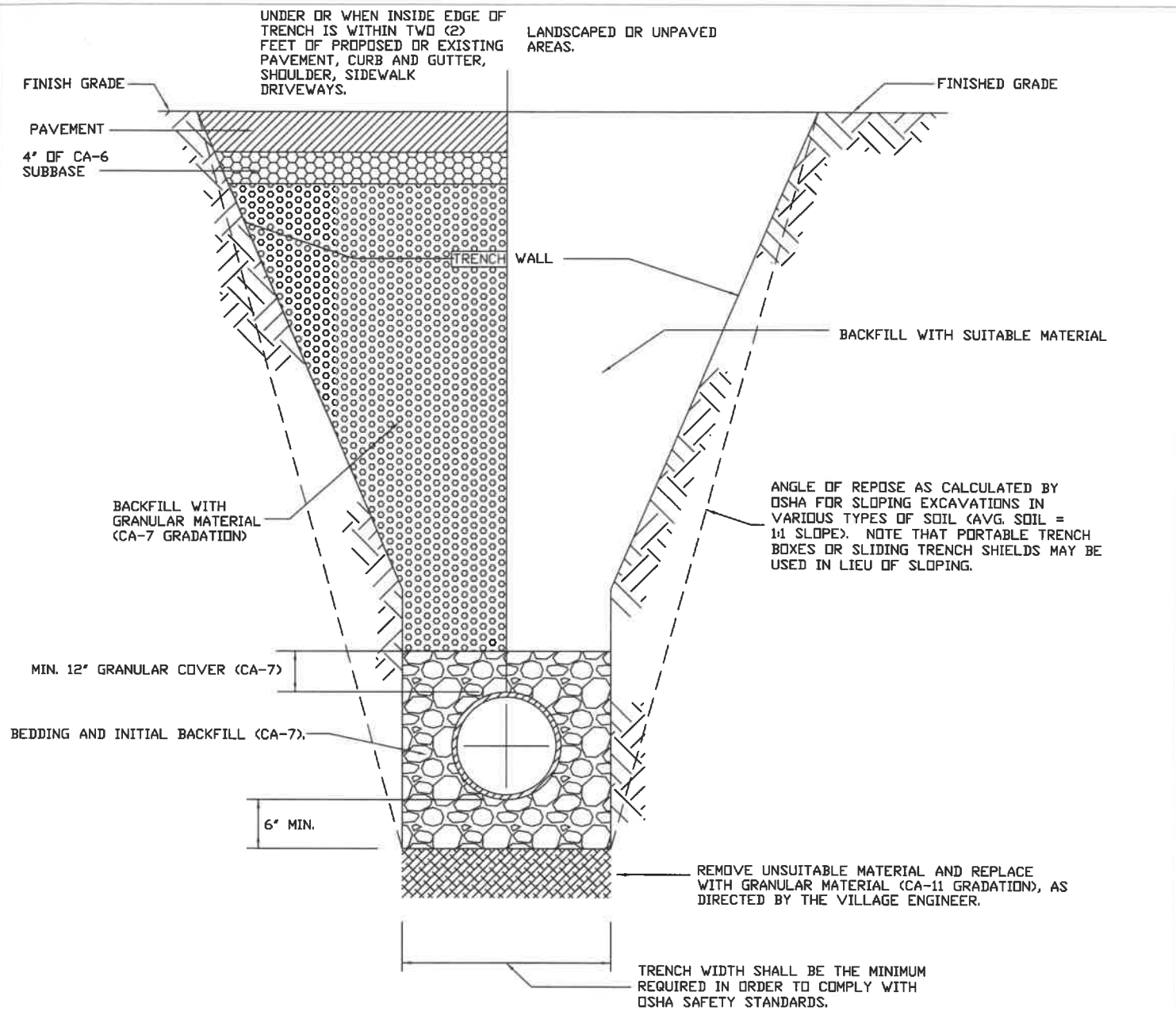
1. ONLY PRECAST REINFORCED CONCRETE BARREL AND RISER SECTIONS ARE ALLOWED.
2. PROVIDE CA-6 BACKFILL AROUND INLET TO SUBGRADE ELEVATION IN PAVED AREAS.
3. WHEN THE FRAME DOES NOT MEET THE PROPOSED ELEVATION, ADJUSTING RINGS SHALL BE USED FOR FINAL ADJUSTMENT. A MAXIMUM OF THREE ADJUSTING RINGS MAY BE USED TO A MAXIMUM HEIGHT OF 12 INCHES. CONCRETE, RUBBERIZED, HIGH DENSITY EXPANDED POLYSTYRENE WITH A POLYURIA COATING OR EXPANDED POLYPROPYLENE RINGS MAY BE USED (ALL RINGS MUST BE IDOT APPROVED). CONCRETE RINGS MAY BE NO LESS THAN 3 INCHES THICK. EACH RING SHALL BE SEALED UNDERNEATH THE FRAME PER THE PRODUCT MANUFACTURERS SPECIFICATIONS WITH THE APPROVAL OF THE ENGINEER.
4. PRECAST ADJUSTING RINGS SHALL BE REINFORCED WITH NO. 3 GAUGE WIRE OR EQUIVALENT AND SHALL HAVE A MINIMUM THICKNESS OF 3 INCHES.
5. MORTAR SHALL NOT BE USED TO DRESS UP ADJUSTING RINGS AND/OR FRAME.
6. IN PAVED AREAS, DRAIN HOLES/WEEP HOLES SHALL BE COVERED WITH FILTER FABRIC. FILTER FABRIC SHALL BE SECURED TO THE OUTSIDE OF STRUCTURE PRIOR TO BACKFILL.
7. IN GRASSED AREAS, DRAIN HOLES/WEEP HOLES SHALL BE PLUGGED WITH HYDRAULIC CEMENT.
8. IF AN IDOT TYPE 8 GRATE CASTING IS CALLED OUT, NO MASTIC SHALL BE ALLOWED BETWEEN THE FRAME AND THE TOP RING OR STRUCTURE. A MINIMUM OF ONE RUBBER RING 1/4" THICKNESS SHALL BE PLACED BETWEEN THE FRAME AND THE TOP RING OR STRUCTURE (EJ INFRA-RISER OR IDOT APPROVED EQUAL). ALL EXCESS MATERIAL EXTENDING BEYOND THE EDGE OF THE GRATE SHALL BE TRIMMED FLUSH.

REV.:	JKB	REV.:	04-23-18
REV.:	CJW	REV.:	02-17-10
REV.:	ERH	REV.:	03-14-99
DRAWN BY:	VJGL	DATE:	02-16-98

INLET TYPE A

VILLAGE OF LOMBARD

STORM 2



GENERAL NOTES:

1. CONTRACTOR SHALL COMPLY WITH ALL APPLICABLE GOVERNING REGULATIONS, INCLUDING BUT NOT LIMITED TO OSHA SAFETY STANDARDS.
2. ALL BACKFILL MATERIAL UP TO A HEIGHT OF 12 INCHES ABOVE THE PIPE SHALL BE CAREFULLY DEPOSITED IN UNIFORM LAYERS NOT EXCEEDING 8 INCHES THICK (LOOSE MEASURE). THE MATERIAL IN EACH LAYER SHALL BE FIRMLY COMPACTED BY RAMMING OR TAMPING WITH TOOLS APPROVED BY THE VILLAGE ENGINEER IN SUCH A MANNER AS NOT TO DISTURB OR DAMAGE THE PIPE. THE BACKFILLING ABOVE THIS HEIGHT SHALL BE DONE AS NOTED BELOW.
3. GRANULAR BACKFILL MATERIAL SHALL BE PLACED AND COMPACTED AS SPECIFIED IN NOTE 2, ABOVE. THE USE OF JETTING SHALL NOT BE ALLOWED UNLESS AUTHORIZED IN WRITING BY THE VILLAGE ENGINEER. IT SHALL BE THE DESIGN ENGINEER OR CONTRACTOR'S RESPONSIBILITY TO PROVIDE APPROPRIATE JUSTIFICATION AND DOCUMENTATION (SOIL INVESTIGATION REPORTS, ETC.) TO THE VILLAGE ENGINEER WITH THE REQUEST FOR APPROVAL OF JETTING.

REV.:	JKB	REV.:	4-23-18
REV.:	DRG	REV.:	4-20-17
REV.:	DRG	REV.:	2-22-16
DRAWN BY:	VJGL	DATE:	2-16-98

**STORM SEWER
TRENCH SECTION**

VILLAGE OF LOMBARD

STORM 11

GENERAL NOTES CONT:

4. BACKFILL MATERIAL CONSISTING OF SUITABLE EXCAVATED MATERIAL SHALL BE PLACED IN LIFTS NOT EXCEEDING TWELVE (12) INCHES THICK (LOOSE MEASURE) AND EACH LAYER SHALL BE COMPACTED BY RAMMING OR TAMPING TO ACHIEVE THE REQUIRED COMPACTION. JETTING OF THIS MATERIAL MAY BE PERMITTED WHEN AUTHORIZED IN WRITING BY THE VILLAGE ENGINEER. IT SHALL BE THE DESIGN ENGINEER OR THE CONTRACTOR'S RESPONSIBILITY TO SUBMIT APPROPRIATE JUSTIFICATION AND DOCUMENTATION (SOILS INVESTIGATION REPORTS, ETC.) TO THE VILLAGE ENGINEER WITH THE REQUEST FOR APPROVAL OF JETTING.

5. GRANULAR MATERIAL FOR BACKFILL AND BEDDING SHALL BE GRAVEL, CRUSHED GRAVEL OR STONE MEETING THE REQUIREMENTS OF THE IDOT 'STANDARD SPECIFICATIONS FOR ROAD AND BRIDGE CONSTRUCTION' FOR COURSE AGGREGATE, OF THE GRADATION SPECIFIED. NO RECYCLED CONCRETE SHALL BE ALLOWED.

6. MINIMUM COVER OVER THE TOP OF PIPE SHALL BE SIX (6) INCHES BELOW FINISHED SUBGRADE IN PAVED AREAS AND TWELVE (12) INCHES BELOW FINISHED GRADE IN LANDSCAPE AREAS.

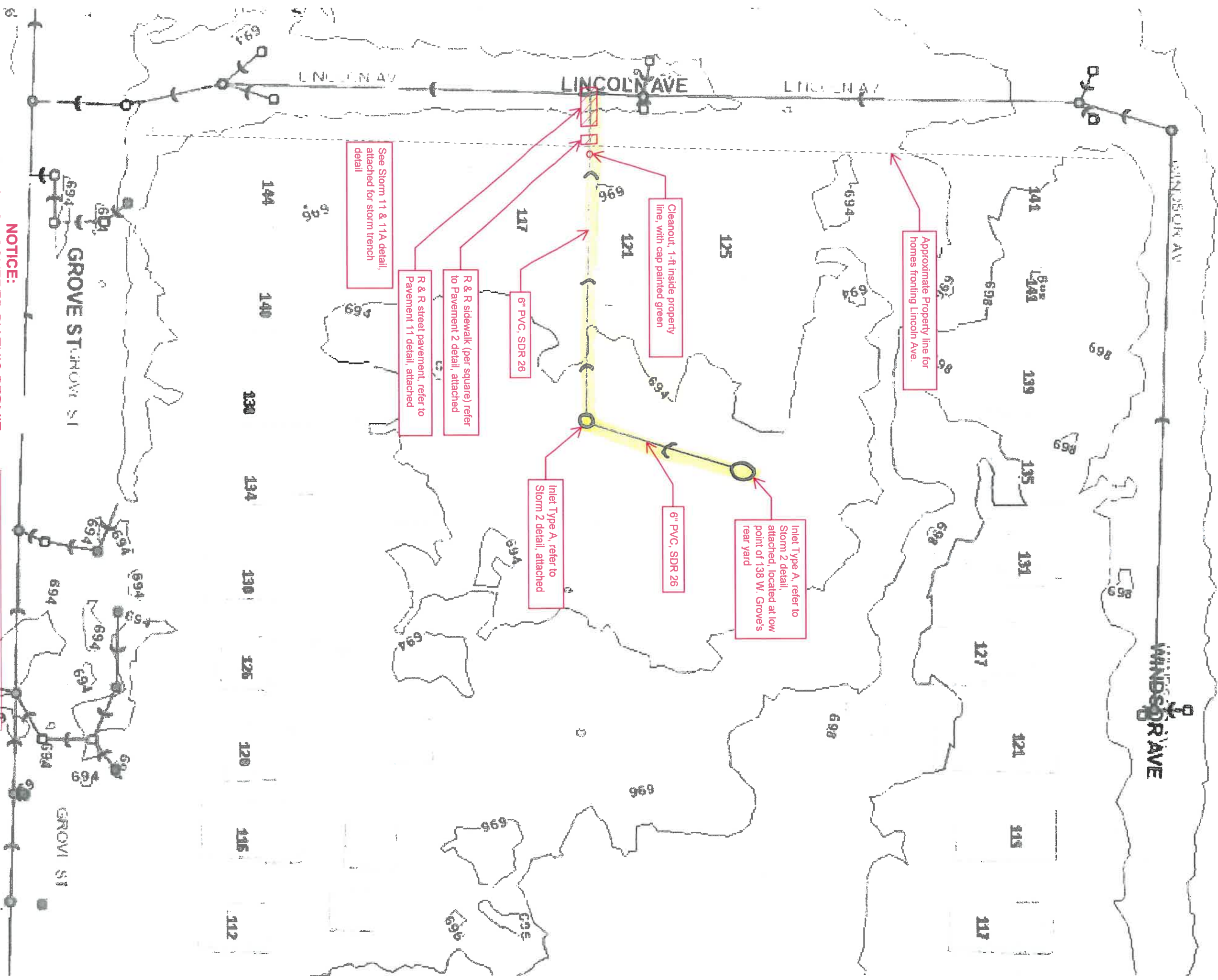
7. THE BEDDING THICKNESS SHALL BE EQUAL TO ONE-QUARTER (1/4) OF THE OUTSIDE DIAMETER OF THE PIPE BUT NOT LESS THAN SIX (6) INCHES.

REV.:	CEI	REV.:	2-12-15
REV.:	ERH	REV.:	3-17-99
DRAWN BY:	ERH	DATE:	2-16-98

STORM SEWER
TRENCH SECTION

VILLAGE OF LOMBARD

STORM-11A



Approximate Property line for homes fronting Lincoln Ave.

Cleanout, 1-ft inside property line, with cap painted green

Inlet Type A, refer to Storm 2 detail, attached at low point of 138 W. Groves rear yard

6" PVC, SDR 26

Inlet Type A, refer to Storm 2 detail, attached

6" PVC, SDR 26

R & R sidewalk (per square) refer to Pavement 2 detail, attached

R & R street pavement, refer to Pavement 11 detail, attached

See Storm 11 & 11A detail, attached for storm trench detail

NOTICE:

THE CONSTRUCTION COVERED BY THIS PERMIT SHALL NOT ALTER THE GRADING OF THE PREMISES OR BLOCK ANY DRAINAGE SO AS TO ADVERSELY IMPACT ON ADJACENT PROPERTIES. ALL EXCAVATED MATERIALS SHALL BE REMOVED FROM THE PREMISES UNLESS PRIOR APPROVAL HAS BEEN GRANTED BY THE VILLAGE ENGINEERING DEPARTMENT.

VILLAGE OF LOMBARD
 Private Engineering Services

APPROVED

APPROVED AS CORRECTED

REVISE AND RESUBMIT

CONDITIONS: private storm sewer & connection

BY: Bryant DATE: 8/26/2019

