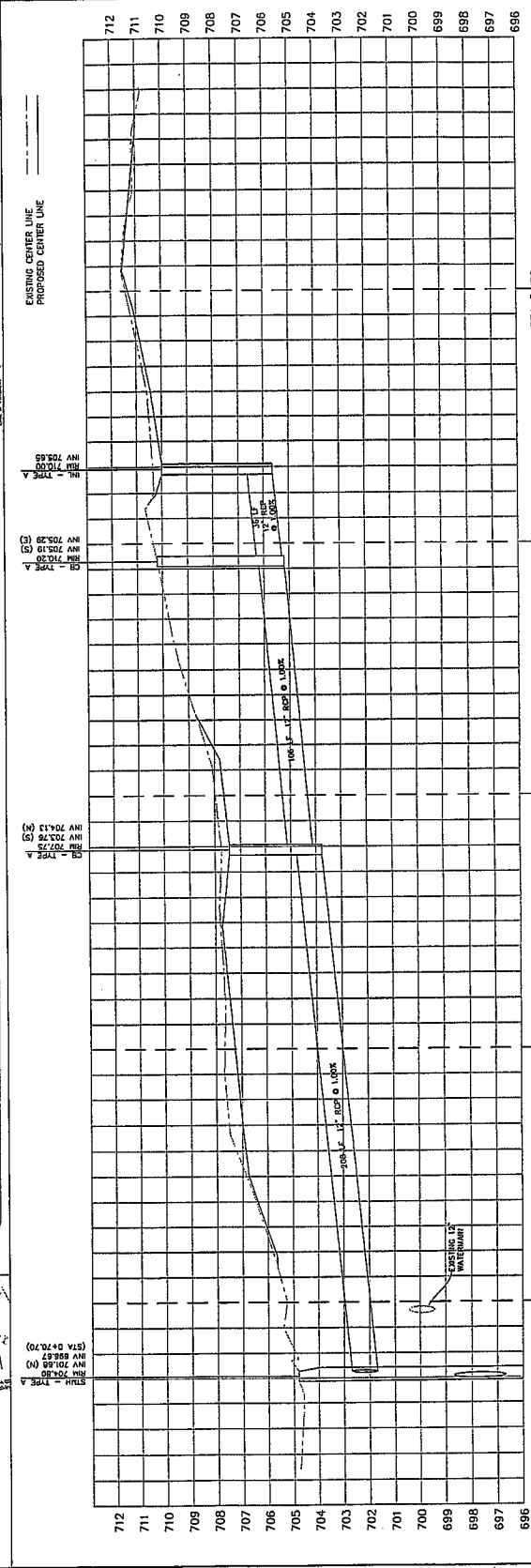
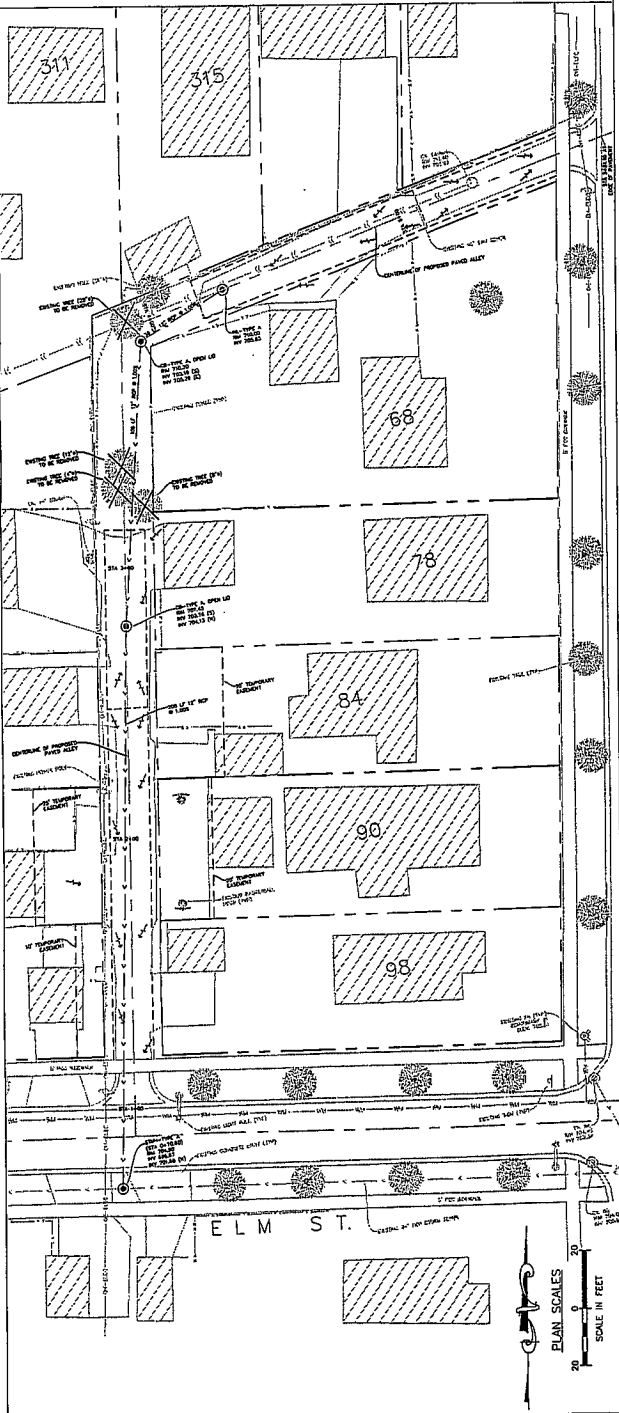
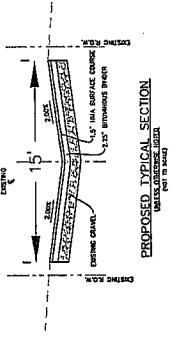


### LEGEND

PROPOSED	EXISTING
STORM SEWER	STORM SEWER
SANITARY SEWER	SANITARY SEWER
OVERHEAD ELECTRIC	OVERHEAD ELECTRIC
FENCE	FENCE
VALVE	VALVE
STORM STRUCTURE	STORM STRUCTURE
SANITARY STRUCTURE	SANITARY STRUCTURE
VALVE VAULT	VALVE VAULT
FIRE HYDRANT	FIRE HYDRANT
UTILITY POLE	UTILITY POLE
TREE	TREE



NO.	DATE	REVISION	BY	DATE	REVISION	NO.	DATE	REVISION	BY	DATE	REVISION

DATE: 8/7/2010	DRAWN BY: JCH
CHECKED BY:	APPROVED BY:

DATE: 8/7/2010	DATE: 8/7/2010
CHECKED BY:	APPROVED BY:

DATE: 8/7/2010	DATE: 8/7/2010
CHECKED BY:	APPROVED BY:

DATE: 8/7/2010	DATE: 8/7/2010
CHECKED BY:	APPROVED BY:

**Storm Sewer Profile & Proposed Grading Plan**

**Proposed Alley Improvements**  
 Lombard Avenue and Elm Street  
 Lombard, Illinois

**Village of Lombard**  
 Department of Public Works  
 PHONE: (630) 658-3388 FAX: (630) 658-3492

### Proposed Alley Improvements

Cost Estimate

Item No	Item	Quantity	Unit	Unit \$	Total \$
20201200	Removal and Disposal of Unsuitable Materials	10	CY	\$30.00	\$300.00
20200100	Earth Excavation	60	CY	\$32.25	\$1,935.00
550A0640	Storm Sewer, Class A, Type 3 - 12"	350	LF	\$60.00	\$21,000.00
X0321317	Trench Backfill, Special	111	CY	\$30.00	\$3,330.00
60228110	Manhole, Type A - 4' Diameter, Closed Lid	1	EA	\$3,000.00	\$3,000.00
60200305	Catchbasin, Type A - 4' Diameter, Open Lid	2	EA	\$3,500.00	\$7,000.00
60235700	Inlet Type A, Open Lid	1	EA	\$1,000.00	\$1,000.00
44004600	PCC Sidewalk Removal and Replacement	250	SF	\$8.00	\$2,000.00
44001700	B6.12 Curb & Gutter Removal and Replacement	20	LF	\$20.00	\$400.00
44201759	Class D Patches, Type IV, 9 Inch	23	SY	\$65.00	\$1,495.00
21101300	Topsoil and Seed	300	SY	\$10.00	\$3,000.00
44000100	Pavement Removal	37	SY	\$10.00	\$370.00
44000200	Driveway Pavement Removal	252	SY	\$10.00	\$2,520.00
Z0004514	Hot-Mix Asphalt Driveway Pavement, 4"	163	SY	\$45.00	\$7,335.00
42300200	PCC Driveway Pavement, 6"	157	SY	\$50.00	\$7,850.00
40600850	1.5" HMA Surface Course	603	SY	\$15.00	\$9,045.00
40600760	2.25" Bituminous Base Course	603	SY	\$20.00	\$12,060.00
				<b>TOTAL</b>	<b>\$83,640.00</b>