



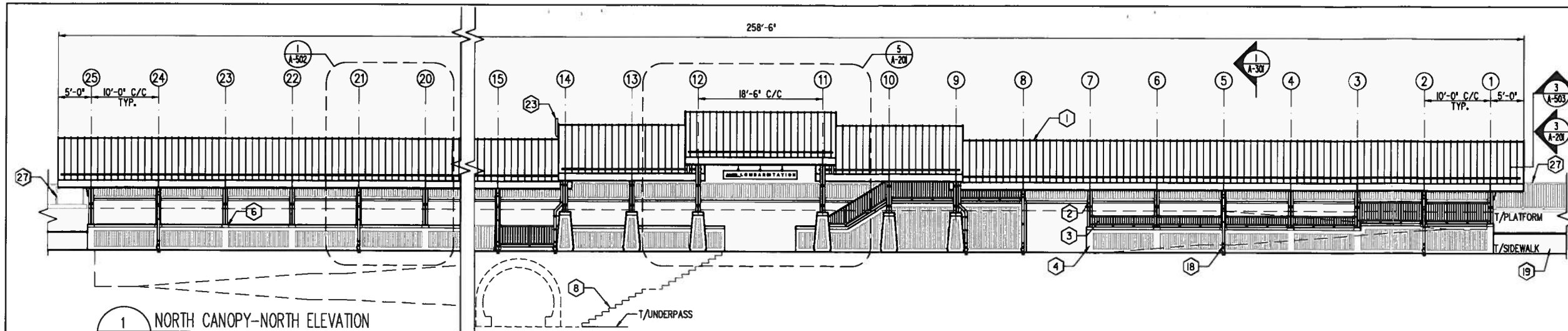
NO.	DATE	REVISED	API
10.			
9.			
8.			
7.			
6.			
5.			
4.	3/25/11	PRE - 90%	JM
3.	10/15/10	60% SUBMITTAL	JM
2.	6/14/10	REV. ELEVATIONS	JM
1.	12/18/09	30% SUBMITTAL	JM

BASE DATE: 12/18/09	
DRAWN	CHECKED
SC, JK	JM
PE NO.	PM
4230C	JM
RRLINE	MILEPOST
UP-W	19.88

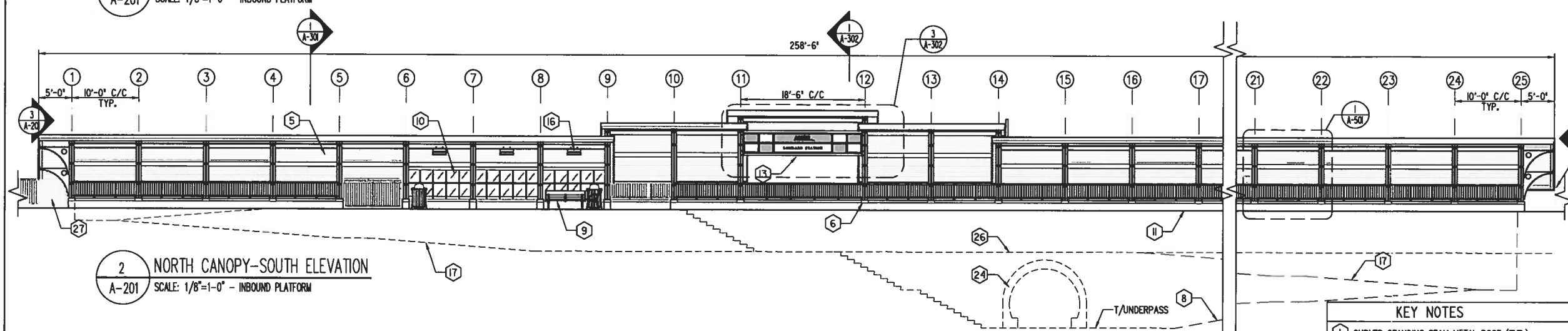
SHEET NO. **A-201**
43 OF 81

PLAN TITLE
**NORTH CANOPY
ELEVATIONS - INBOUND PLATFORM**

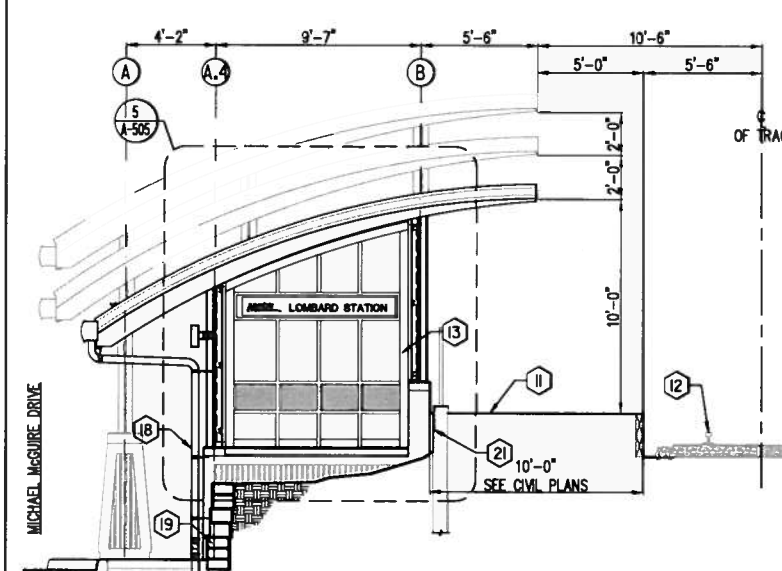
MEW: A-201
CADD FILE NO. 4230CPA201.dwg
STATION NAME: LOMBARD STATION - LOMBARD



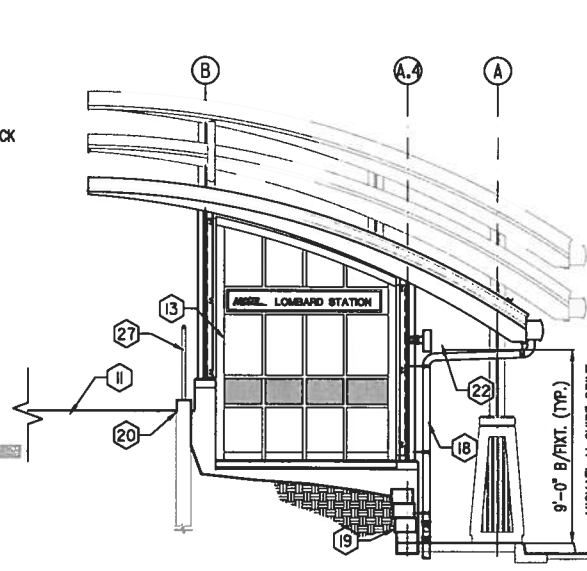
1 NORTH CANOPY-NORTH ELEVATION
A-201 SCALE: 1/8"=1'-0" - INBOUND PLATFORM



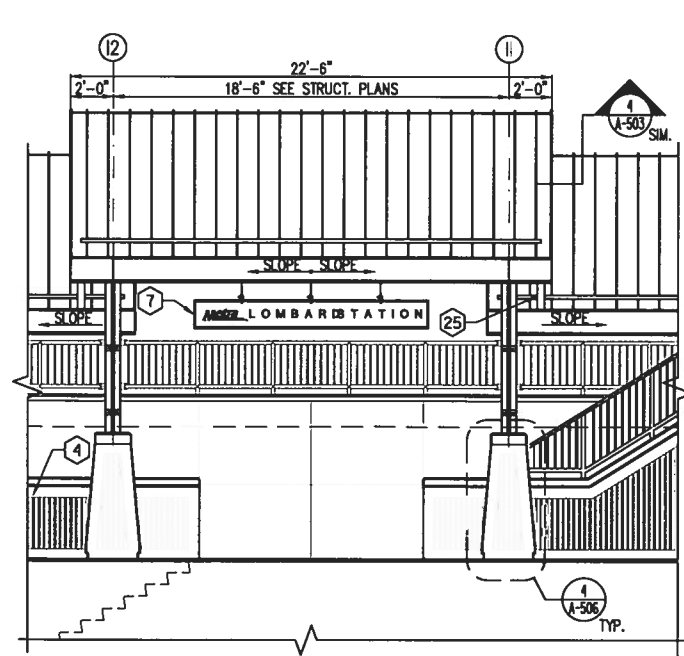
2 NORTH CANOPY-SOUTH ELEVATION
A-201 SCALE: 1/8"=1'-0" - INBOUND PLATFORM



3 NORTH CANOPY - WEST ELEVATION
A-201 SCALE: 1/4"=1'-0" - INBOUND PLATFORM



4 NORTH CANOPY - EAST ELEVATION
A-201 SCALE: 1/4"=1'-0" - INBOUND PLATFORM



5 PARTIAL ENLARGED CANOPY ELEVATION
A-201 SCALE: 1/4"=1'-0"

KEY NOTES

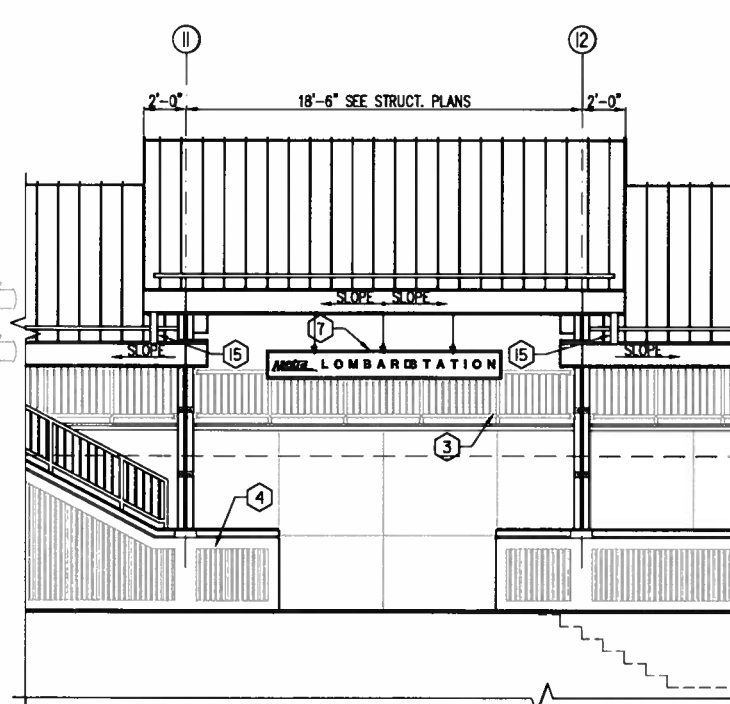
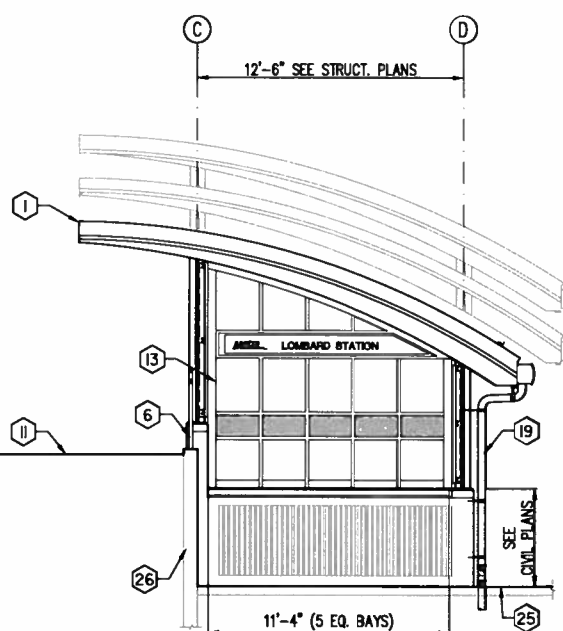
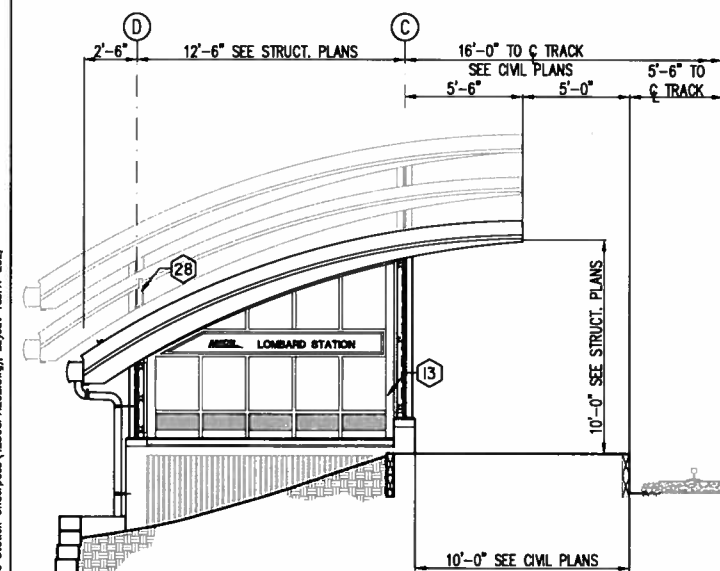
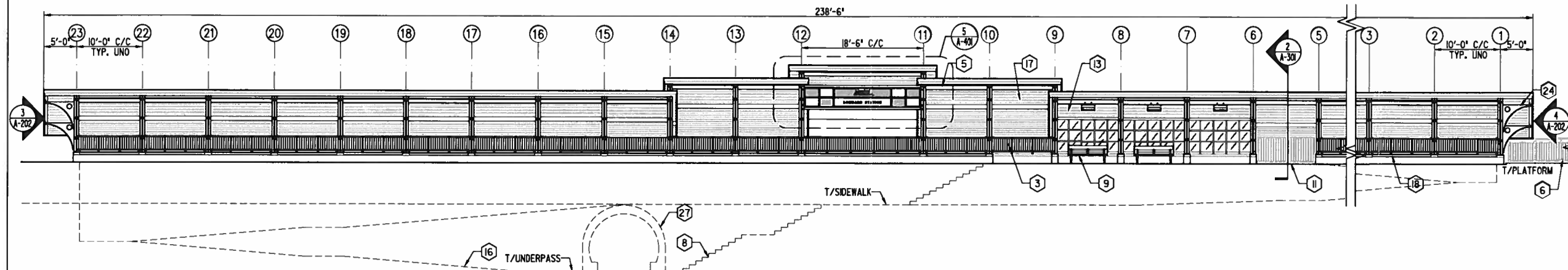
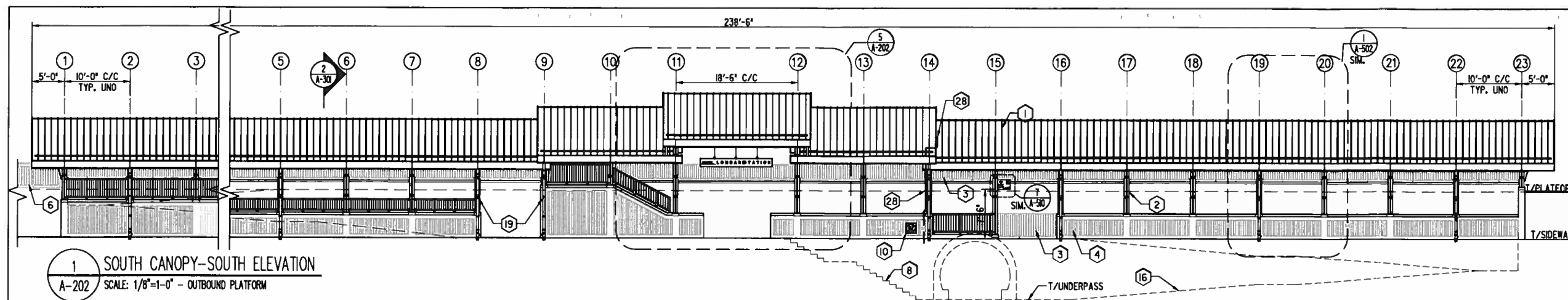
- CURVED STANDING SEAM METAL ROOF (TYP.)
- GALV. STEEL COLUMN (TYP.)
- GALV. STEEL GUARDRAILING (TYP.)
- CONCRETE WALL W/ FORMLINED FINISH (TYP.)
- EXPOSED METAL DECK BEYOND (TYP.)
- GALV. METAL COLUMN BASE COVER (TYP.)
- STATION SIGNAGE
- STAIRS TO UNDERPASS BEYOND
- BENCH
- ALUMINUM FRAME AND CLEAR TEMPERED GLASS WINDBREAK
- EXISTING REHABILITATED PLATFORM W/ WARNING TACTILE. SEE CIVIL DRAWINGS (TYP.)
- EXISTING RR TRACKS (TYP.)
- ALUMINUM FRAME AND METAL PANEL WINDBREAK
- NOT USED
- NOT USED
- INFRARED HEATER (TYP.)
- T/RAMP BEYOND
- ALUMINUM DOWNSPOUT W/ CAST IRON BOOT. SEE P-601 (TYP.)
- SEGMENTAL RETAINING WALL. SEE CIVIL DWGS. (TYP.)
- EXIST. CONC. RETAINING WALL. SEE CIVIL DWGS.
- CONC. RETAINING WALL. SEE CIVIL DWGS.
- COLUMN MOUNTED LIGHT FIXTURE (TYP.)
- VENT PIPE EXTEND BEYOND ROOF. SEE PLUMB. DWGS.
- UNDERPASS ENTRANCE (TYP.)
- ALUMINUM DOWNSPOUT TO LOWER GUTTER (BOTH SIDES)
- T/SIDEWALK BEYOND
- GUARDRAILING. SEE CIVIL DWGS.

Plotted: 8/20/11, 8:47 AM
Xref: 4230CPA201.dwg
Comp: T:\C:\Users\jmc\Documents\4230CPA201.dwg
Cadd File: 4230CPA201.dwg
Cadd File No: 4230CPA201.dwg
Station Name: LOMBARD STATION - LOMBARD

10.			
9.			
8.			
7.			
6.			
5.			
4.	3/25/11	PRE-90%	JM
3.	10/15/10	60% SUBMITTAL	JM
2.	8/14/10	REV. ELEVATIONS	JM
1.	12/18/09	30% SUBMITTAL	JM
NO.	DATE	REVISED	API

BASE DATE: 12/18/09	
DRAWN SC, JK	CHECKED JM
PE NO. 4230C	PM JM
RRLINE	MILEPOST
UP-W	18.88

SHEET NO.	A-202
	44 OF 81
PLAN TITLE	SOUTH CANOPY ELEVATIONS - OUTBOUND PLATFORM
VIEW:	A-202
CADD FILE NO.	4230CPA202.dwg
STATION NAME:	LOMBARD STATION - LOMBARD IL



KEY NOTES	
1	CURVED STANDING SEAM METAL ROOF (TYP.)
2	GALV. STEEL COLUMN (TYP.)
3	GALV. STEEL GUARDRAILING (TYP.)
4	CONCRETE WALL W/ FORMLINED FINISH (TYP.)
5	EXPOSED METAL DECK (TYP.)
6	GUARDRAILING. SEE CIVIL DWGS.
7	STATION SIGNAGE, SEE G-100 FOR DETAILS (TYP.)
8	STAIRS TO UNDERPASS BEYOND
9	BENCH
10	GAS METER. SEE MECH. HVAC DWGS.
11	EXISTING REHABILITATED PLATFORM W/ WARNING TACTILE. SEE CIVIL DRAWINGS (TYP.)
12	NOT USED
13	ALUMINUM FRAME AND METAL PANEL WINDBREAK
14	NOT USED
15	ALUMINUM DOWNSPOUT DOWN TO LOWER ROOF (BOTH SIDES)
16	T/RAMP BEYOND
17	GALV. METAL DECK BEYOND
18	CONC. KNEE WALL
19	ALUMINUM DOWNSPOUT W/ CAST IRON BOOT. SEE P-601 (TYP.)
20	NOT USED.
21	GALV. METAL COLUMN BASE COVER (TYP.)
22	NOT USED
23	COLUMN MOUNTED LIGHT FIXTURE (TYP.)
24	GALV. STEEL BRACKET. SEE STRUCT. DWGS. (TYP.)
25	SIDEWALK
26	EXISTING RETAINING WALL. SEE CIVIL DWGS.
27	UNDERPASS ENTRANCE (TYP.)
28	VENT PIPE. EXTEND BEYOND ROOF. SEE PLUMB. DWGS.

Plotted: B:\projects\4230CPA202.dwg, 2/25/2011 8:49 AM
 Xref: 4230CPA202.dwg, 4230CPA202.dwg
 Comp: T:\C:\Users\jtk005\Documents\4230CPA202.dwg, Layer: Tbl: A-202









