



FRED BUCHOLZ
DUPAGE COUNTY RECORDER
AUG.06,2015 9:16 AM
OTHER \$31.00 06-05-108-005
005 PAGES R2015-086679

**RESOLUTION
R 27-15**

**AUTHORIZING SIGNATURE OF
PRESIDENT AND CLERK ON A PLAT OF EASEMENT
ABROGATION**

PIN: 06-05-108-005

ADDRESS: 149 E. Goebel Drive, Lombard, IL 60148

**Prepared by and Return To:
Village of Lombard
255 E. Wilson Avenue
Lombard, IL 60148**



I, **Janet Downer**, hereby certify that I am the duly qualified Deputy Village Clerk of the **Village of Lombard**, DuPage County, Illinois, as authorized by Statute and provided by local Ordinance, and as such Deputy Village Clerk, I maintain and am safekeeper of the records and files of the President and Board of Trustees of said Village.

I further certify that attached hereto is a
copy of

RESOLUTION

R 27-15

AUTHORIZING SIGNATURE OF
PRESIDENT AND CLERK ON A PLAT OF EASEMENT ABROGATION

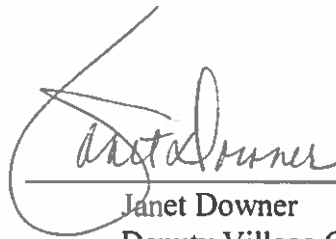
PIN: 06-05-108-005

ADDRESS: 149 E. Goebel Drive, Lombard, IL 60148

of the said Village as it appears from the official records
of said Village duly approved this 2nd
day of April, 2015.

In Witness Whereof, I have hereunto affixed my official signature and the
Corporate Seal of said **Village of Lombard**, Du Page County, Illinois
this 18th day of May, 2015.





Janet Downer
Deputy Village Clerk
Village of Lombard
DuPage County, Illinois

**RESOLUTION
R 27-15**

**A RESOLUTION AUTHORIZING SIGNATURE OF
PRESIDENT AND CLERK ON A PLAT OF EASEMENT ABROGATION**

WHEREAS, the Corporate Authorities of the Village of Lombard have received a Plat of Easement Abrogation, as attached hereto and marked Exhibit "A"; and,

WHEREAS the Corporate Authorities deem it to be in the best interest of the Village of Lombard to authorize the abrogation of the easement.

NOW, THEREFORE, BE IT RESOLVED BY THE PRESIDENT AND BOARD OF TRUSTEES OF THE VILLAGE OF LOMBARD, DU PAGE COUNTY, ILLINOIS, as follows:

SECTION 1: That the Village President be and hereby is authorized to sign on behalf of the Village of Lombard said document as attached hereto.

SECTION 2: That the Village Clerk be and hereby is authorized to attest said document as attached hereto.

Adopted this 2nd day of April, 2015.

Ayes: Trustee Whittington, Fugiel, Foltyniewicz, Johnston, Pike and Ware


Nays: None

Absent: None

Approved this 2nd day of April, 2015.


Keith T. Giagnorio
Village President

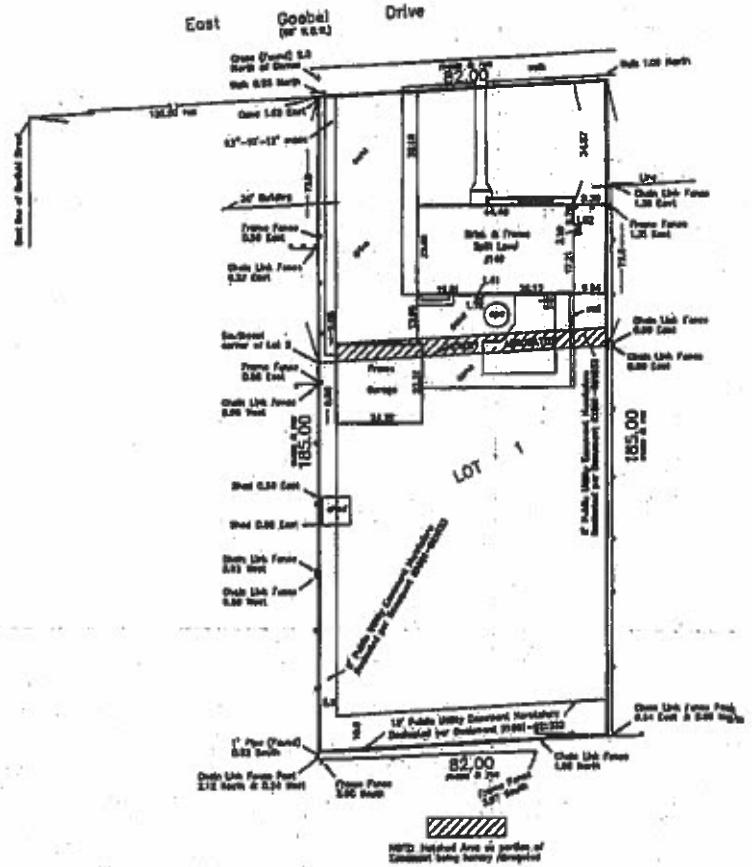
ATTEST:


Sharon Kuderna
Village Clerk



FD-36 (2-18-65) 0-0

PLAT OF ABRIGATION OF PUBLIC UTILITIES



COMMONWEALTH EDISON COMPANY CERTIFICATE

This Plat of Abrogation is approved and accepted by Commonwealth Edison Company on the 3 day of March A.D. 1958 by Mark Cogg Real Estate Specialist

AT&T CERTIFICATE

This Plat of Abrogation is approved and accepted by AT&T, S. of the 27 day of FEBRUARY, A.D. 1958 by Arthur J. Gorman Director of Map-Manager

UNITED BANK COMPANY CERTIFICATE

This Plat of Abrogation is approved and accepted by United Bank Company on the 24 day of DECEMBER, A.D. 1957 by Frank Blanton TRUSTS ENGINEER

LEWIS AND CLARK COUNTY DEVELOPMENT CERTIFICATE

Approved by the Department of Community Development of the State of Kentucky, on the _____ day of _____ A.D. 1958

LEWIS AND CLARK COUNTY BOARD OF HEALTH CERTIFICATE

Approved by the President and Board of Trustees of the State of Kentucky, on the _____ day of _____ A.D. 1958

LIVING COUNTY RECORDS OF DEEDS CERTIFICATE

This instrument is recorded in the Recorder's Office of Living County, Kentucky, on the _____ day of _____ A.D. 1958

WEST ONE COMPANY CERTIFICATE

This Plat of Abrogation is approved and accepted by West One Company on the 23 day of February, A.D. 1958 by Walter H. Smith Local Management Agent

POWER CERTIFICATE

This is to certify that the undersigned, before the records of the land described in the attached plat and has caused the same to be approved and placed on record for the purpose and purposes indicated therein, and does hereby acknowledge that she is the owner of the right and title therein indicated.

Given at London, Kentucky, this 30 day of MARCH, A.D. 1958

Costi Klevry Costi Klevry

UTILITY PUBLIC CERTIFICATE

WALTER C. PUGH, a utility public, to and for all, hereby certifies that COMMONWEALTH EDISON COMPANY is duly authorized to use the land described in the attached plat and has caused the same to be approved and placed on record for the purpose and purposes indicated therein, and does hereby acknowledge that she is the owner of the right and title therein indicated.

Given under my hand and seal this 23 day of MARCH, A.D. 1958

WALTER C. PUGH

REVISION CERTIFICATE

This is to certify that WALTER C. PUGH, Utility Public, before the records of the land described in the attached plat and has caused the same to be approved and placed on record for the purpose and purposes indicated therein, and does hereby acknowledge that she is the owner of the right and title therein indicated.

Given under my hand and seal this 17 day of FEBRUARY, A.D. 1958

WALTER C. PUGH

KARAL SURVEYING COMPANY
 2411 Commonwealth Avenue
 Louisville, Kentucky 40203
 Phone: (502) 452-1111
 FAX: (502) 452-1112
 www.karal.com

PLAT OF ABRIGATION
 Prepared by: David G. Karal
 Order number: 148138



LEGEND
 Shaded = Common, 1 = East
 2 = West, 3 = South
 4 = North, 5 = East
 6 = West, 7 = South
 8 = North, 9 = East
 10 = West, 11 = South
 12 = North, 13 = East
 14 = West, 15 = South
 16 = North, 17 = East
 18 = West, 19 = South
 20 = North, 21 = East
 22 = West, 23 = South
 24 = North, 25 = East
 26 = West, 27 = South
 28 = North, 29 = East
 30 = West, 31 = South
 32 = North, 33 = East
 34 = West, 35 = South
 36 = North, 37 = East
 38 = West, 39 = South
 40 = North, 41 = East
 42 = West, 43 = South
 44 = North, 45 = East
 46 = West, 47 = South
 48 = North, 49 = East
 50 = West, 51 = South
 52 = North, 53 = East
 54 = West, 55 = South
 56 = North, 57 = East
 58 = West, 59 = South
 60 = North, 61 = East
 62 = West, 63 = South
 64 = North, 65 = East
 66 = West, 67 = South
 68 = North, 69 = East
 70 = West, 71 = South
 72 = North, 73 = East
 74 = West, 75 = South
 76 = North, 77 = East
 78 = West, 79 = South
 80 = North, 81 = East
 82 = West, 83 = South
 84 = North, 85 = East
 86 = West, 87 = South
 88 = North, 89 = East
 90 = West, 91 = South
 92 = North, 93 = East
 94 = West, 95 = South
 96 = North, 97 = East
 98 = West, 99 = South
 100 = North, 101 = East
 102 = West, 103 = South
 104 = North, 105 = East
 106 = West, 107 = South
 108 = North, 109 = East
 110 = West, 111 = South
 112 = North, 113 = East
 114 = West, 115 = South
 116 = North, 117 = East
 118 = West, 119 = South
 120 = North, 121 = East
 122 = West, 123 = South
 124 = North, 125 = East
 126 = West, 127 = South
 128 = North, 129 = East
 130 = West, 131 = South
 132 = North, 133 = East
 134 = West, 135 = South
 136 = North, 137 = East
 138 = West, 139 = South
 140 = North, 141 = East
 142 = West, 143 = South
 144 = North, 145 = East
 146 = West, 147 = South
 148 = North, 149 = East
 150 = West, 151 = South
 152 = North, 153 = East
 154 = West, 155 = South
 156 = North, 157 = East
 158 = West, 159 = South
 160 = North, 161 = East
 162 = West, 163 = South
 164 = North, 165 = East
 166 = West, 167 = South
 168 = North, 169 = East
 170 = West, 171 = South
 172 = North, 173 = East
 174 = West, 175 = South
 176 = North, 177 = East
 178 = West, 179 = South
 180 = North, 181 = East
 182 = West, 183 = South
 184 = North, 185 = East
 186 = West, 187 = South
 188 = North, 189 = East
 190 = West, 191 = South
 192 = North, 193 = East
 194 = West, 195 = South
 196 = North, 197 = East
 198 = West, 199 = South
 200 = North, 201 = East
 202 = West, 203 = South
 204 = North, 205 = East
 206 = West, 207 = South
 208 = North, 209 = East
 210 = West, 211 = South
 212 = North, 213 = East
 214 = West, 215 = South
 216 = North, 217 = East
 218 = West, 219 = South
 220 = North, 221 = East
 222 = West, 223 = South
 224 = North, 225 = East
 226 = West, 227 = South
 228 = North, 229 = East
 230 = West, 231 = South
 232 = North, 233 = East
 234 = West, 235 = South
 236 = North, 237 = East
 238 = West, 239 = South
 240 = North, 241 = East
 242 = West, 243 = South
 244 = North, 245 = East
 246 = West, 247 = South
 248 = North, 249 = East
 250 = West, 251 = South
 252 = North, 253 = East
 254 = West, 255 = South
 256 = North, 257 = East
 258 = West, 259 = South
 260 = North, 261 = East
 262 = West, 263 = South
 264 = North, 265 = East
 266 = West, 267 = South
 268 = North, 269 = East
 270 = West, 271 = South
 272 = North, 273 = East
 274 = West, 275 = South
 276 = North, 277 = East
 278 = West, 279 = South
 280 = North, 281 = East
 282 = West, 283 = South
 284 = North, 285 = East
 286 = West, 287 = South
 288 = North, 289 = East
 290 = West, 291 = South
 292 = North, 293 = East
 294 = West, 295 = South
 296 = North, 297 = East
 298 = West, 299 = South
 300 = North, 301 = East
 302 = West, 303 = South
 304 = North, 305 = East
 306 = West, 307 = South
 308 = North, 309 = East
 310 = West, 311 = South
 312 = North, 313 = East
 314 = West, 315 = South
 316 = North, 317 = East
 318 = West, 319 = South
 320 = North, 321 = East
 322 = West, 323 = South
 324 = North, 325 = East
 326 = West, 327 = South
 328 = North, 329 = East
 330 = West, 331 = South
 332 = North, 333 = East
 334 = West, 335 = South
 336 = North, 337 = East
 338 = West, 339 = South
 340 = North, 341 = East
 342 = West, 343 = South
 344 = North, 345 = East
 346 = West, 347 = South
 348 = North, 349 = East
 350 = West, 351 = South
 352 = North, 353 = East
 354 = West, 355 = South
 356 = North, 357 = East
 358 = West, 359 = South
 360 = North, 361 = East
 362 = West, 363 = South
 364 = North, 365 = East
 366 = West, 367 = South
 368 = North, 369 = East
 370 = West, 371 = South
 372 = North, 373 = East
 374 = West, 375 = South
 376 = North, 377 = East
 378 = West, 379 = South
 380 = North, 381 = East
 382 = West, 383 = South
 384 = North, 385 = East
 386 = West, 387 = South
 388 = North, 389 = East
 390 = West, 391 = South
 392 = North, 393 = East
 394 = West, 395 = South
 396 = North, 397 = East
 398 = West, 399 = South
 400 = North, 401 = East
 402 = West, 403 = South
 404 = North, 405 = East
 406 = West, 407 = South
 408 = North, 409 = East
 410 = West, 411 = South
 412 = North, 413 = East
 414 = West, 415 = South
 416 = North, 417 = East
 418 = West, 419 = South
 420 = North, 421 = East
 422 = West, 423 = South
 424 = North, 425 = East
 426 = West, 427 = South
 428 = North, 429 = East
 430 = West, 431 = South
 432 = North, 433 = East
 434 = West, 435 = South
 436 = North, 437 = East
 438 = West, 439 = South
 440 = North, 441 = East
 442 = West, 443 = South
 444 = North, 445 = East
 446 = West, 447 = South
 448 = North, 449 = East
 450 = West, 451 = South
 452 = North, 453 = East
 454 = West, 455 = South
 456 = North, 457 = East
 458 = West, 459 = South
 460 = North, 461 = East
 462 = West, 463 = South
 464 = North, 465 = East
 466 = West, 467 = South
 468 = North, 469 = East
 470 = West, 471 = South
 472 = North, 473 = East
 474 = West, 475 = South
 476 = North, 477 = East
 478 = West, 479 = South
 480 = North, 481 = East
 482 = West, 483 = South
 484 = North, 485 = East
 486 = West, 487 = South
 488 = North, 489 = East
 490 = West, 491 = South
 492 = North, 493 = East
 494 = West, 495 = South
 496 = North, 497 = East
 498 = West, 499 = South
 500 = North, 501 = East
 502 = West, 503 = South
 504 = North, 505 = East
 506 = West, 507 = South
 508 = North, 509 = East
 510 = West, 511 = South
 512 = North, 513 = East
 514 = West, 515 = South
 516 = North, 517 = East
 518 = West, 519 = South
 520 = North, 521 = East
 522 = West, 523 = South
 524 = North, 525 = East
 526 = West, 527 = South
 528 = North, 529 = East
 530 = West, 531 = South
 532 = North, 533 = East
 534 = West, 535 = South
 536 = North, 537 = East
 538 = West, 539 = South
 540 = North, 541 = East
 542 = West, 543 = South
 544 = North, 545 = East
 546 = West, 547 = South
 548 = North, 549 = East
 550 = West, 551 = South
 552 = North, 553 = East
 554 = West, 555 = South
 556 = North, 557 = East
 558 = West, 559 = South
 560 = North, 561 = East
 562 = West, 563 = South
 564 = North, 565 = East
 566 = West, 567 = South
 568 = North, 569 = East
 570 = West, 571 = South
 572 = North, 573 = East
 574 = West, 575 = South
 576 = North, 577 = East
 578 = West, 579 = South
 580 = North, 581 = East
 582 = West, 583 = South
 584 = North, 585 = East
 586 = West, 587 = South
 588 = North, 589 = East
 590 = West, 591 = South
 592 = North, 593 = East
 594 = West, 595 = South
 596 = North, 597 = East
 598 = West, 599 = South
 600 = North, 601 = East
 602 = West, 603 = South
 604 = North, 605 = East
 606 = West, 607 = South
 608 = North, 609 = East
 610 = West, 611 = South
 612 = North, 613 = East
 614 = West, 615 = South
 616 = North, 617 = East
 618 = West, 619 = South
 620 = North, 621 = East
 622 = West, 623 = South
 624 = North, 625 = East
 626 = West, 627 = South
 628 = North, 629 = East
 630 = West, 631 = South
 632 = North, 633 = East
 634 = West, 635 = South
 636 = North, 637 = East
 638 = West, 639 = South
 640 = North, 641 = East
 642 = West, 643 = South
 644 = North, 645 = East
 646 = West, 647 = South
 648 = North, 649 = East
 650 = West, 651 = South
 652 = North, 653 = East
 654 = West, 655 = South
 656 = North, 657 = East
 658 = West, 659 = South
 660 = North, 661 = East
 662 = West, 663 = South
 664 = North, 665 = East
 666 = West, 667 = South
 668 = North, 669 = East
 670 = West, 671 = South
 672 = North, 673 = East
 674 = West, 675 = South
 676 = North, 677 = East
 678 = West, 679 = South
 680 = North, 681 = East
 682 = West, 683 = South
 684 = North, 685 = East
 686 = West, 687 = South
 688 = North, 689 = East
 690 = West, 691 = South
 692 = North, 693 = East
 694 = West, 695 = South
 696 = North, 697 = East
 698 = West, 699 = South
 700 = North, 701 = East
 702 = West, 703 = South
 704 = North, 705 = East
 706 = West, 707 = South
 708 = North, 709 = East
 710 = West, 711 = South
 712 = North, 713 = East
 714 = West, 715 = South
 716 = North, 717 = East
 718 = West, 719 = South
 720 = North, 721 = East
 722 = West, 723 = South
 724 = North, 725 = East
 726 = West, 727 = South
 728 = North, 729 = East
 730 = West, 731 = South
 732 = North, 733 = East
 734 = West, 735 = South
 736 = North, 737 = East
 738 = West, 739 = South
 740 = North, 741 = East
 742 = West, 743 = South
 744 = North, 745 = East
 746 = West, 747 = South
 748 = North, 749 = East
 750 = West, 751 = South
 752 = North, 753 = East
 754 = West, 755 = South
 756 = North, 757 = East
 758 = West, 759 = South
 760 = North, 761 = East
 762 = West, 763 = South
 764 = North, 765 = East
 766 = West, 767 = South
 768 = North, 769 = East
 770 = West, 771 = South
 772 = North, 773 = East
 774 = West, 775 = South
 776 = North, 777 = East
 778 = West, 779 = South
 780 = North, 781 = East
 782 = West, 783 = South
 784 = North, 785 = East
 786 = West, 787 = South
 788 = North, 789 = East
 790 = West, 791 = South
 792 = North, 793 = East
 794 = West, 795 = South
 796 = North, 797 = East
 798 = West, 799 = South
 800 = North, 801 = East
 802 = West, 803 = South
 804 = North, 805 = East
 806 = West, 807 = South
 808 = North, 809 = East
 810 = West, 811 = South
 812 = North, 813 = East
 814 = West, 815 = South
 816 = North, 817 = East
 818 = West, 819 = South
 820 = North, 821 = East
 822 = West, 823 = South
 824 = North, 825 = East
 826 = West, 827 = South
 828 = North, 829 = East
 830 = West, 831 = South
 832 = North, 833 = East
 834 = West, 835 = South
 836 = North, 837 = East
 838 = West, 839 = South
 840 = North, 841 = East
 842 = West, 843 = South
 844 = North, 845 = East
 846 = West, 847 = South
 848 = North, 849 = East
 850 = West, 851 = South
 852 = North, 853 = East
 854 = West, 855 = South
 856 = North, 857 = East
 858 = West, 859 = South
 860 = North, 861 = East
 862 = West, 863 = South
 864 = North, 865 = East
 866 = West, 867 = South
 868 = North, 869 = East
 870 = West, 871 = South
 872 = North, 873 = East
 874 = West, 875 = South
 876 = North, 877 = East
 878 = West, 879 = South
 880 = North, 881 = East
 882 = West, 883 = South
 884 = North, 885 = East
 886 = West, 887 = South
 888 = North, 889 = East
 890 = West, 891 = South
 892 = North, 893 = East
 894 = West, 895 = South
 896 = North, 897 = East
 898 = West, 899 = South
 900 = North, 901 = East
 902 = West, 903 = South
 904 = North, 905 = East
 906 = West, 907 = South
 908 = North, 909 = East
 910 = West, 911 = South
 912 = North, 913 = East
 914 = West, 915 = South
 916 = North, 917 = East
 918 = West, 919 = South
 920 = North, 921 = East
 922 = West, 923 = South
 924 = North, 925 = East
 926 = West, 927 = South
 928 = North, 929 = East
 930 = West, 931 = South
 932 = North, 933 = East
 934 = West, 935 = South
 936 = North, 937 = East
 938 = West, 939 = South
 940 = North, 941 = East
 942 = West, 943 = South
 944 = North, 945 = East
 946 = West, 947 = South
 948 = North, 949 = East
 950 = West, 951 = South
 952 = North, 953 = East
 954 = West, 955 = South
 956 = North, 957 = East
 958 = West, 959 = South
 960 = North, 961 = East
 962 = West, 963 = South
 964 = North, 965 = East
 966 = West, 967 = South
 968 = North, 969 = East
 970 = West, 971 = South
 972 = North, 973 = East
 974 = West, 975 = South
 976 = North, 977 = East
 978 = West, 979 = South
 980 = North, 981 = East
 982 = West, 983 = South
 984 = North, 985 = East
 986 = West, 987 = South
 988 = North, 989 = East
 990 = West, 991 = South
 992 = North, 993 = East
 994 = West, 995 = South
 996 = North, 997 = East
 998 = West, 999 = South
 1000 = North, 1001 = East
 1002 = West, 1003 = South
 1004 = North, 1005 = East
 1006 = West, 1007 = South
 1008 = North, 1009 = East
 1010 = West, 1011 = South
 1012 = North, 1013 = East
 1014 = West, 1015 = South
 1016 = North, 1017 = East
 1018 = West, 1019 = South
 1020 = North, 1021 = East
 1022 = West, 1023 = South
 1024 = North, 1025 = East
 1026 = West, 1027 = South
 1028 = North, 1029 = East
 1030 = West, 1031 = South
 1032 = North, 1033 = East
 1034 = West, 1035 = South
 1036 = North, 1037 = East
 1038 = West, 1039 = South
 1040 = North, 1041 = East
 1042 = West, 1043 = South
 1044 = North, 1045 = East
 1046 = West, 1047 = South
 1048 = North, 1049 = East
 1050 = West, 1051 = South
 1052 = North, 1053 = East
 1054 = West, 1055 = South
 1056 = North, 1057 = East
 1058 = West, 1059 = South
 1060 = North, 1061 = East
 1062 = West, 1063 = South
 1064 = North, 1065 = East
 1066 = West, 1067 = South
 1068 = North, 1069 = East
 1070 = West, 1071 = South
 1072 = North, 1073 = East
 1074 = West, 1075 = South
 1076 = North, 1077 = East
 1078 = West, 1079 = South
 1080 = North, 1081 = East
 1082 = West, 1083 = South
 1084 = North, 1085 = East
 1086 = West, 1087 = South
 1088 = North, 1089 = East
 1090 = West, 1091 = South
 1092 = North, 1093 = East
 1094 = West, 1095 = South
 1096 = North, 1097 = East
 1098 = West, 1099 = South
 1100 = North, 1101 = East
 1102 = West, 1103 = South
 1104 = North, 1105 = East
 1106 = West, 1107 = South
 1108 = North, 1109 = East
 1110 = West, 1111 = South
 1112 = North, 1113 = East
 1114 = West, 1115 = South
 1116 = North, 1117 = East
 1118 = West, 1119 = South
 1120 = North, 1121 = East
 1122 = West, 1123 = South
 1124 = North, 1125 = East
 1126 = West, 1127 = South
 1128 = North, 1129 = East
 1130 = West, 1131 = South
 1132 = North, 1133 = East
 1134 = West, 1135 = South
 1136 = North, 1137 = East
 1138 = West, 1139 = South
 1140 = North, 1141 = East
 1142 = West, 1143 = South
 1144 = North, 1145 = East
 1146 = West, 1147 = South
 1148 = North, 1149 = East
 1150 = West, 1151 = South
 1152 = North, 1153 = East
 1154 = West, 1155 = South
 1156 = North, 1157 = East
 1158 = West, 1159 = South
 1160 = North, 1161 = East
 1162 = West, 1163 = South
 1164 = North, 1165 = East
 1166 = West, 1167 = South
 1168 = North, 1169 = East
 1170 = West, 1171 = South
 1172 = North, 1173 = East
 1174 = West, 1175 = South
 1176 = North, 1177 = East
 1178 = West, 1179 = South
 1180 = North, 1181 = East
 1182 = West, 1183 = South
 1184 = North, 1185 = East
 1186 = West, 1187 = South
 1188 = North, 1189 = East
 1190 = West, 1191 = South
 1192 = North, 1193 = East
 1194 = West, 1195 = South
 1196 = North, 1197 = East
 1198 = West, 1199 = South
 1200 = North, 1201 = East
 1202 = West, 1203 = South
 1204 = North, 1205 = East
 1206 = West, 1207 = South
 1208 = North, 1209 = East
 1210 = West, 1211 = South
 1212 = North, 1213 = East
 1214 = West, 1215 = South
 1216 = North, 1217 = East
 1218 = West, 1219 = South
 1220 = North, 1221 = East
 1222 = West, 1223 = South
 1224 = North, 1225 = East
 1226 = West, 1227 = South
 1228 = North, 1229

Exhibit B

Legal Description

LOT 1 IN ROSS RESUBDIVISION IN THE NORTHWEST QUARTER OF SECTION 5, TOWNSHIP 39 NORTH, RANGE 11, EAST OF THE THIRD PRINCIPAL MERIDIAN, ACCORDING TO THE PLAT THEREOF, RECORDED SEPTEMBER 6, 1961, AS DOCUMENT R61-21033, IN DUPAGE COUNTY, ILLINOIS.

PIN: 06-05-108-005

Commonly known as: 149 E. Goebel Drive, Lombard, IL 60148