



## Memorandum

**To:** Wes Anderson, Director of Public Works   
**From:** John Burg, Assistant Director of Public Works   
**Date:** October 21, 2004  
**Subject:** Recycling Containers at Prairie Path and Great Western Trail Crossings

The Environmental Concerns Committee wants to determine if a recycling program at the Prairie Path and Great Western Trail street crossings can be viable. The measures of success would be the amount of materials collected in each container and the percentage of uncontaminated material. The Committee would like to do a pilot project and install 4 recycling containers with 2 containers on each path, one at a high-volume and one at a low-volume crossing. The high/low sites would clarify whether any location would be successful. If the pilot project shows the path crossings do not attract sufficient recycling, the Committee would place the containers elsewhere in town.

On October 19, 2004 the Committee recommended the purchase of 4 Fibrex recycling containers for this pilot project at a cost of \$4,504.00 plus shipping. The full cost including shipping is \$4,537.60 (see attached quote). The high-quality forest green containers are made of 95% post-consumer recycled materials, and have a track record of only a 5% contamination rate. The containers collect bottles and cans.

The Committee looked at other alternatives. A number of companies had containers for only bottles or cans. One container the Committee considered was for cans only, and the Village would have had to modify it to accept bottles. The Fibrex container holds 65 gallons as compared to 30 gallons in the other container.

Staff concurs with the Committee's decision, and recommends purchase of these 4 recycling containers from the Fibrex Group, Inc. in the amount of \$4,537.60.

If you have any questions, please see me.

# FAX TRANSMITTAL

Date: 10/20/2004  
Pages: 2  
To: Village of Lombard, IL  
Attention: Mr. John Burg  
Fax Phone: 630-620-5982  
From: Ms. Diane Ruthe



---

*The Fibrex Group, Inc. - 3734 Cook Blvd. - Chesapeake, VA 23323*  
\* If transmittal is not clear, please call FIBREX at (757) 487-5744 or Fax (757) 487-5876 \*

---

Dear John,

In reference to our telephone conversation, you will find attached your quotation on the Fibrex Recycling Containers.

We would like to thank you for taking our offer into consideration. If you should have any questions, or if I can assist you in placing your order, please do not hesitate to call me at 1-800-346-4458 extension 15.

Best regards,

A handwritten signature in cursive script that reads "Diane Ruthe".

Diane Ruthe  
Business Development Coordinator

**QUOTATION**

TO: Village of Lombard  
 ATTN: Mr. John Burg  
 DATE: 10/20/2004



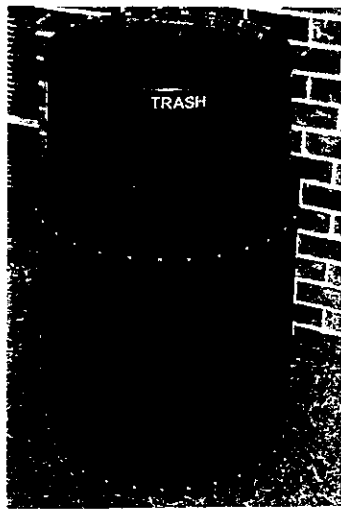
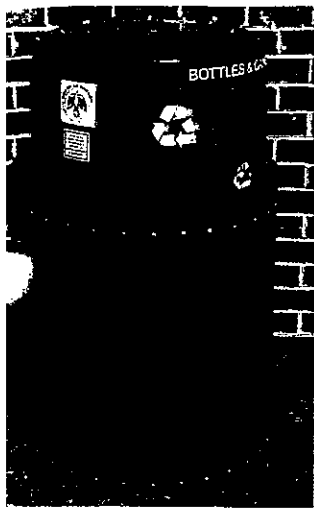
<u>MODEL</u>	<u>CODE</u>	<u>COLOR</u>	<u>NUMBER</u>	<u>UNIT PRICE</u>	<u>TOTAL COST</u>
Recycled Plastic Lumber roll cart recycling depot/65 gallon roll cart depot w/ full size door, keyed lock, magnetic closure drop in opening & decal reading "Recycle/Bottles & Cans w/ mobius loop	R9865	Forest green	4	\$1,126.00	\$4,504.00

<b>SUBTOTAL</b>		\$4,504.00
<b>DISCOUNT</b>	10%	\$450.40
<b>SUBTOTAL</b>		\$4,053.60
<b>* SHIPPING &amp; HANDLING</b>		\$484.00
<b>TOTAL AMOUNT</b>		<u>\$4,537.60</u>

DELIVERY TERMS : 30 - 45 days after receipt of order  
 PAYMENT TERMS : NET 30 Days - upon credit approval  
 SHIPPING TERMS : F.O.B. Chesapeake, VA  
 PRICING TERMS : Quoted prices are valid for ninety (90) days from date of quotation.

<b>ACCEPTED BY:</b>
PO #:
Tax Exempt #:
Signature:
Bill To:
Ship To:

<b>AUTHORIZED BY:</b> <i>D.L. Rutter</i>
<b>DATE:</b> 10/20/04
<b>REMITTANCE TO:</b>
The Fibrex Group Inc. 3734 Cook Blvd. Chesapeake, VA 23323



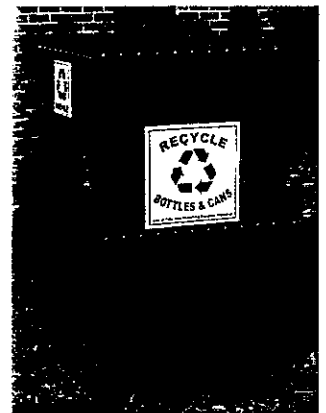
# Envirodesign

Recycled Plastic Lumber

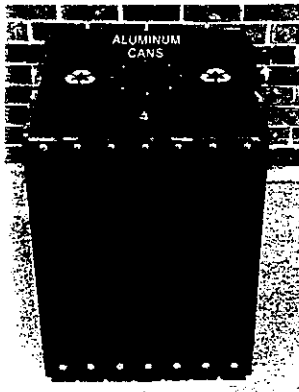
## Recycling

### Receptacles

The Envirodesign Recycled Plastic Lumber Recycling Receptacles are made from 95% post consumer content recycled plastic (milk jugs) and are available with one, two, three or four compartments. We manufacture a large selection of styles, sizes and color choices designed especially for the collection of both waste and recyclables at non-residential locations.



Public area recycling receptacles permit people to practice their good recycling habits when at work or at play. Our multi-compartment receptacles allow for source-separated collection of recyclable beverage containers, recyclable paper products and residue waste products. Designed to last, resist vandalism and bad weather, these receptacles are attractive in design and perfect for high traffic areas such as parks, universities, city streets, sidewalks and many other public spaces.



The new recycled plastic lumber recycling depots hold most standard 65 or 95 gallon wheeled refuse carts. The unit comes standard with a full size lockable door through which you can remove the interior 65 or 95 gallon roll cart. The drop-in openings can be placed on the top or side of the depot.

model	code	capacity	weight	dimensions
Combination Trash/Recycling Receptacle	RL4200	2x 21 gallon	100 lbs.	26" dia x 42"
Beveled flat top receptacle	F9125	25 gallon	65 lbs.	20" dia x 33"
Beveled flat top receptacle	F9132	32 gallon	100 lbs.	26" dia x 34"
Beveled flat top receptacle	F9155	55 gallon	135 lbs.	26" dia x 40"
Sloped top receptacle	S9225	25 gallon	70 lbs.	26" dia x 43"
Sloped top receptacle	S9232	32 gallon	105 lbs.	26" dia x 44"
Sloped top receptacle	S9255	55 gallon	140 lbs.	26" dia x 50"
Square hinged steel top receptacle	ST9225	25 gallon	97 lbs.	22" x 22" x 32"
Square hinged steel top receptacle	ST9322	32 gallon	140 lbs.	22" x 22" x 32"
Roll cart recycling depot	R9865	65 gallon	220 lb.	36" x 32" x 42"
Roll cart recycling depot	R9895	95 gallon	295 lbs.	36" x 37" x 46"

