



To: Chairperson and Transportation and Safety Committee

From: Frank Kalisik, Civil Engineer *F. Kalisik*

Through: Carl S. Goldsmith, Director of Public Works *CSG by [Signature]*

Date: July 24, 2009

Subject: North Chase Avenue – Vehicle Parking Issue

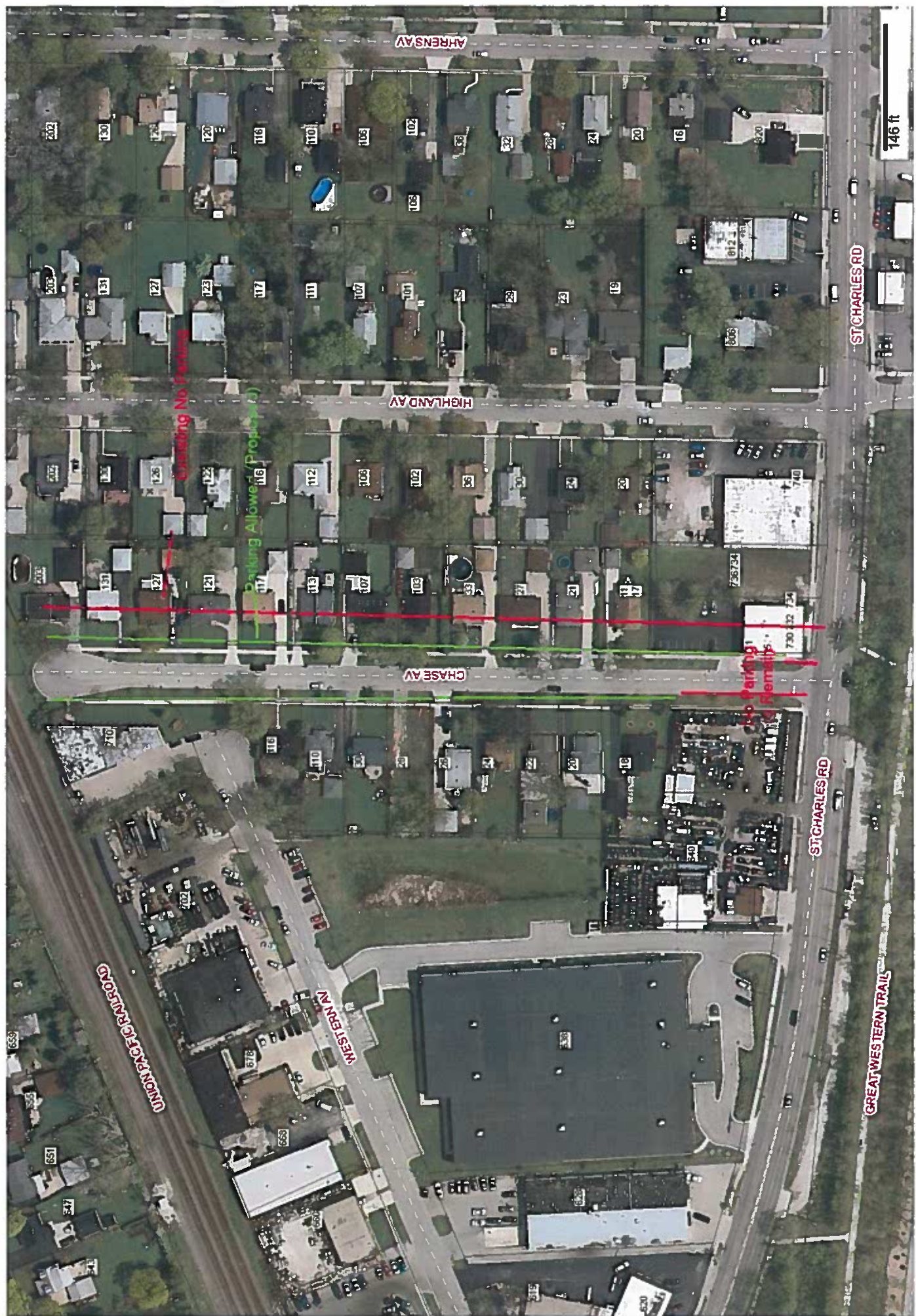
Several months ago, vehicle parking significantly increased on North Chase Avenue, causing concern with local residents, such as increased litter and competition for parking spaces in front of residential homes. Representatives from the Village Public Works, Police, and Community Development Departments have investigated this activity and have determined the following:

1. North Chase Avenue is a residential cul-de-sac street with off-street parking provided for the business at 730 E St. Charles Road. North Chase Avenue parking is currently restricted on the entire east side of the road, and on the west side along the business located at 640 E St. Charles Road (intended to insure adequate emergency vehicles ingress/egress).
2. The building located at 730 E St. Charles Road has recently changed owners/occupants causing a significant increase in the number of employees. On-site parking cannot handle the amount of new employees, causing the employees to park on the street, in front of the first 3 to 4 homes on the west side of the road.
3. The property at 730 E St. Charles Road is in compliance with current Village on-site parking requirements.

Several options, from taking no action to increasing parking availability, are viable solutions to this concern. Staff recommends and requests a recommendation of increasing the North Chase Avenue parking space availability. Removing the No Parking Zone restriction would accommodate about six (6) vehicles in front of this business, reduce the business's impact on the residents, and allow the residents to park in front of their homes.

cc: Dana Moreau, Trustee, District 4

North Chase Parking Restrictions



No Parking

Parking Allowed (Proprietary)

No Parking

ST CHARLES RD

ST CHARLES RD

GREAT WESTERN TRAIL

146 ft