

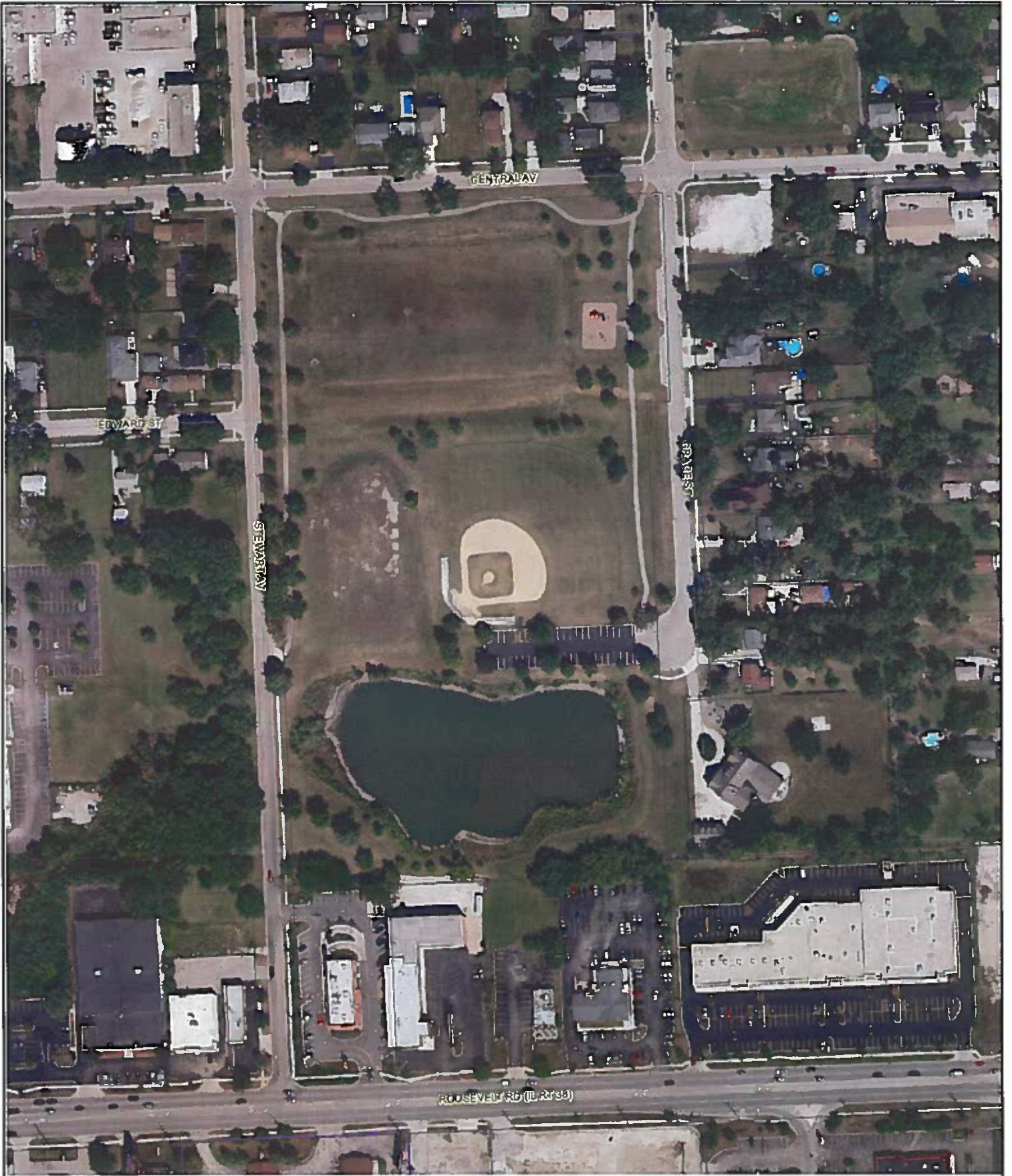


To: Chairperson and Transportation and Safety Committee
From: Frank Kalisik, Civil Engineer *FK*
Through: Carl S. Goldsmith, Director of Public Works *CSG by DPT*
Date: September 28, 2010
Subject: Southland Park Traffic Considerations

The Village has received a request for the Transportation and Safety Committee to consider addressing traffic and parking issues on streets surrounding the Southland Park, including installation of a 4-way stop at Central and Stewart, and instituting parking restrictions on Grace Street, south of Central. At this time, staff does not have any recommendations.



200 ft



Johnson, John

From: Rick Poole [rpoole@lombardparks.com]
Sent: Friday, October 01, 2010 3:36 PM
To: Johnson, John
Subject: Parking Communication

John,

Here is a copy of the e-mails we sent out today.

#1 E-mail - House League Soccer

Dear Coaches,

Here are a couple final tidbits as we head into the weekend's games:

Parking Concerns

It has been brought to the Park Districts attention that residents have expressed concerns with street parking at Southland, Schafer School and Madison Meadows during soccer and Football use. In order to avoid any inconvenience to our neighbors, we would like to encourage participants to utilize the parking lots at these locations, rather than using street parking whenever possible. Would you please communicate this to your parents and visiting teams. Your prompting and encouragement would be appreciated. Thanks for your help in this matter.

Picture Day

Don't forget that picture day is tomorrow at Pleasant Lane School. The picture day schedule has been sent out on more than one occasion, but is again attached to this email. It also has been posted online. Please encourage your team to arrive a minimum of 5 minutes prior to the scheduled picture time to help the day move along in a timely manner. There will be blank order forms at picture day for parents to fill out should they forget to bring the one that was distributed last weekend.

Please contact me with any questions or concerns.

Thanks!

#2 E-mail - Falcons and Firebirds

Todd, Ellen,

It has been brought to the Park Districts attention that residents have expressed concerns with street parking at Southland, Schaefer School and Madison Meadows during soccer and Football use. In order to avoid any inconvenience to our neighbors, we would like to encourage participants to utilize the parking lots at these locations. Would you please communicate this to your parents and visiting teams. Your prompting and encouragement would be appreciated. Thanks for your help in this matter.

Let me know if we can help in any other way.

Rick Poole
Lombard Park District