

RESOLUTION
R 37-13

**RESOLUTION ACCEPTING PUBLIC SANITARY SEWER AT 1005 N.
ROHLWING ROAD IN LOMBARD, ILLINOIS**

WHEREAS, the Private Engineering Services Division of the Village of Lombard has certified the completion of the public sanitary sewer for the DuPage Auto Body sanitary connection project at 1005 N. Rohlwing Road and has recommended that said improvement be accepted; and

WHEREAS, the Corporate Authorities concur with said recommendation.

NOW, THEREFORE, BE IT RESOLVED BY THE PRESIDENT AND BOARD OF TRUSTEES OF THE VILLAGE OF LOMBARD, DU PAGE COUNTY, ILLINOIS, AS FOLLOWS:

SECTION 1: That the public sanitary sewer for the DuPage Auto Body sanitary connection project at 1005 N. Rohlwing Road, as certified by the Private Engineering Services Division and as set forth on the approved engineering plans be and hereby is accepted for ownership by the Village of Lombard.

SECTION 2: That the on-site sanitary sewer shall remain privately owned and maintained.

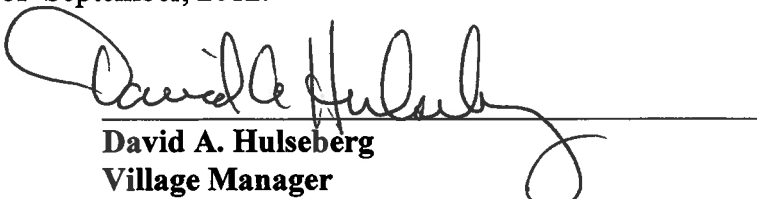
Adopted this 6th day of September, 2012,
pursuant to a roll call vote as follows:

Ayes: Trustees Gron, Giagnorio, Wilson, Breen, Fitzpatrick and Ware

Nays: None

Absent: None

Approved by me this 6th day of September, 2012.


David A. Hulseberg
Village Manager
(Pursuant to the Authority Granted by the Village Board at the September 6, 2012 Village Board Meeting)

ATTEST:

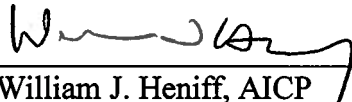

Brigitte O'Brien
Village Clerk

**CERTIFICATE OF COMPLETION FOR PUBLIC SANITARY SEWER
AT 1005 N. ROHLWING ROAD**

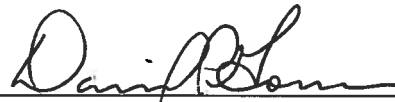
We, as representatives of the Village of Lombard, certify that the public sanitary sewer for the DuPage Auto Body sanitary connection project at 1005 N. Rohlwing Road has been constructed substantially per plan.

We recommend acceptance by the Village President and the Board of Trustees of the Village of Lombard.

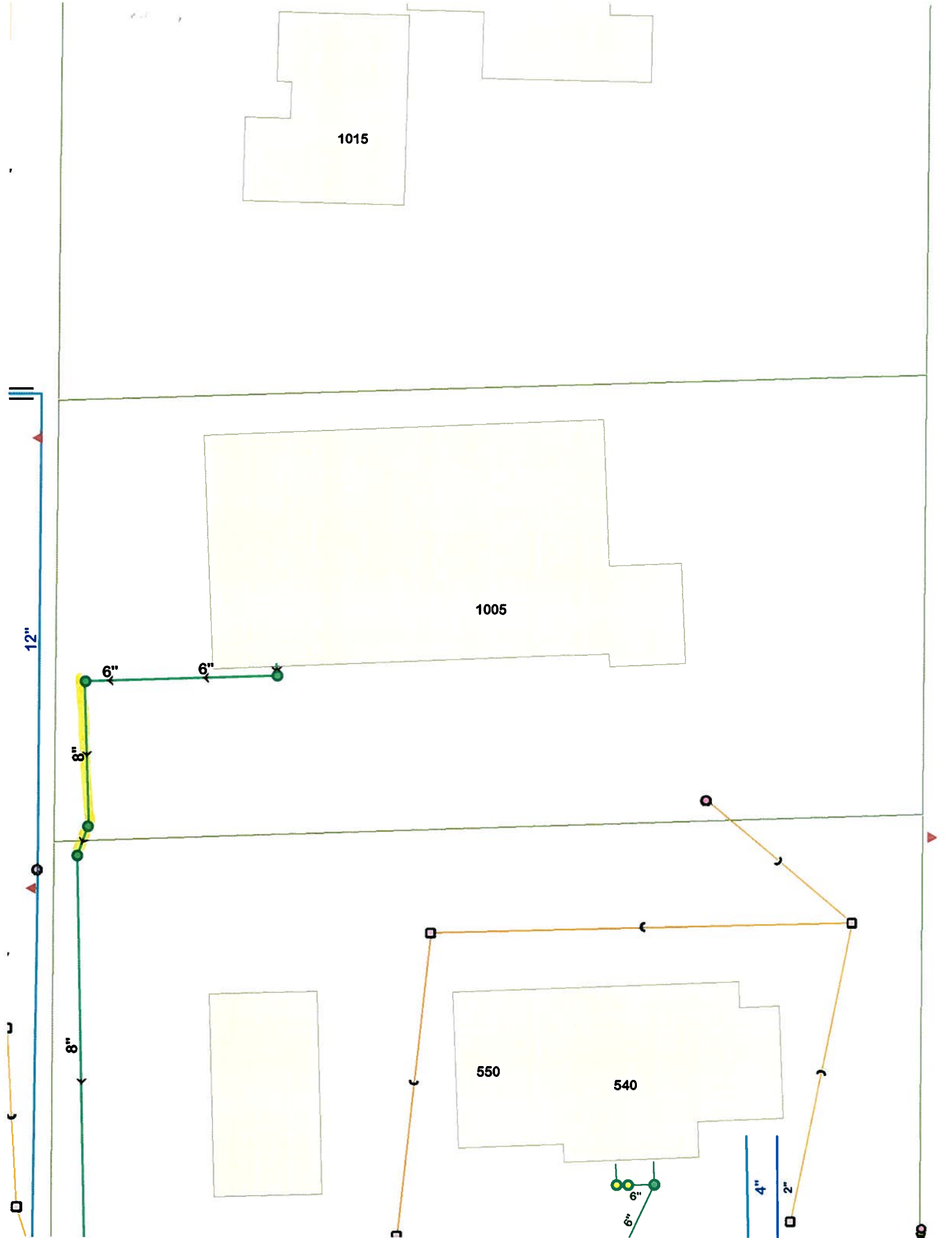
Recommended for acceptance:



William J. Heniff, AICP
Director of Community Development



David P. Gorman, PE
Asst. Director of Public Works



1015

1005

550

540

12"

8"

6"

6"

8"

6"

4"

2"