

130059



LOMBARD POLICE DEPARTMENT



Date: January 31, 2013

To: Chairperson and Transportation and Safety Committee

From: Pat Rollins
Deputy Chief of Police

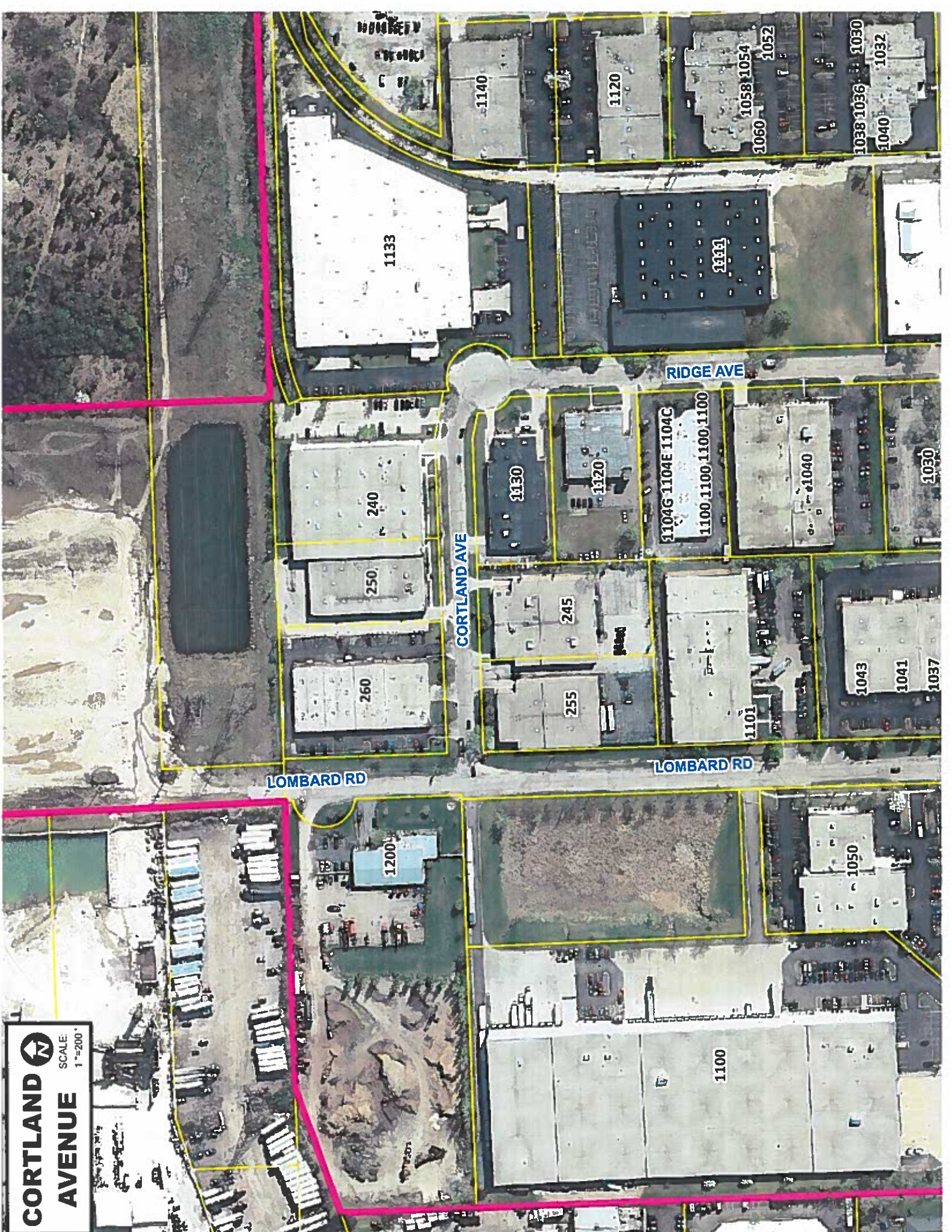
Re: Cortland Ave, Amend Parking Restrictions

Cortland Ave in the North Industrial park stretches from Lombard Road to Ridge Ave. This street connects the north section of the industrial park between the two streets. There are five buildings addressed to Cortland Ave. All of the buildings have driveway access to the street. Currently, Cortland Ave is designated as "No Parking" on both sides of the street.

On January 4, 2013, Community Development Director, Bill Heniff and Keith Steiskal – Building Official, and I met with two owners of Article II (Gun Range) regarding the existing parking concerns in the area. The owners are requesting the Village to allow on street parking to assist with the additional cars in the area looking to park for his business. This was a follow up meeting from a year ago when the Village asked the owners to approach and make arrangements with neighboring businesses to assist with the additional passenger cars looking for legal places to park. At this meeting, the steps taken by the owners and reaching out to the neighboring businesses was discussed.

The Police Department utilized the Truck Enforcement Officer to look at the street to see if on-site street parking would impede any traffic including the commercial vehicle traffic on Cortland. The officer determined that on-street parking can be accomplished by utilizing the south side of Cortland after 5PM and Weekends for non-commercial vehicles in certain sections of the road. The Truck Officer spent many weekend hours and after 5PM week days to make this recommendation.

Community Development and the Police Department are recommending to amend the current parking restrictions on Cortland to allow on street parking of Non-Commercial Vehicles after 5PM to 2AM on Weekdays and permitting all day parking on Saturday and Sunday for Non-Commercial Vehicles.



CORTLAND

AVENUE



SCALE
1" = 200'

LOMBARD RD

CORTLAND AVE

RIDGE AVE

LOMBARD RD

1133

1140

1120

1050
1058
1054

1052

1038
1036

1040

1030
1032

240

250

260

1130

1120

1104G 1104E 1104C

1100 1100 1100 1100

1040

1030

245

255

1101

1043

1041

1037

1100

1050