

**VILLAGE OF LOMBARD**  
**REQUEST FOR BOARD OF TRUSTEES ACTION**  
For Inclusion on Board Agenda

Resolution or Ordinance (Blue) \_\_\_\_\_  
Waiver of First Requested  
Recommendations of Boards, Commissions & Committees (Green)  
Other Business (Pink) \_\_\_\_\_

\_\_\_\_\_  
\_\_\_\_\_  
X

**TO:** PRESIDENT AND BOARD OF TRUSTEES

**FROM:** William T. Lichter, Village Manager

**DATE:** December 19, 2007 (COW) (B of T) **Date:** January 3, 2008

**TITLE:** Main Street STP  
Plat of Dedication

**SUBMITTED BY:** David A. Dratmol, P.E., Village Engineer *265 ft*

**BACKGROUND/POLICY IMPLICATIONS:**

See memo.

**FISCAL IMPACT/FUNDING SOURCE:**

None

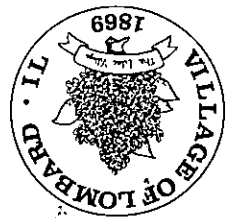
Review (as necessary):  
Village Attorney X  
Finance Director X  
Village Manager X

\_\_\_\_\_  
Date \_\_\_\_\_  
\_\_\_\_\_  
Date \_\_\_\_\_  
\_\_\_\_\_  
Date 12/19/07

All materials must be submitted to and approved by the Village  
Manager's Office by 12:00 noon, Wednesday, prior to the Agenda  
Distribution.

### InterOffice Memo

**To:** William T. Lichter, Village Manager  
**From:** David A. Dratmol, P.E. Village Engineer *DAL*  
 David Gorman, P.E., Acting Director of Public Works *DGA*  
**Date:** December 19, 2008  
**Subject:** Main Street STP  
 Plat of Dedication



Attached is a plat of dedication for property associated with the Main Street STP project, which is scheduled to be let by IDOT on March 9, 2008.

As part of the project requirements, IDOT had the Village secure all the temporary easements required for the project. This has been accomplished.

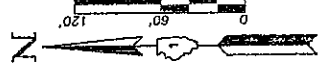
During the temporary easement acquisition process it was found that the title to one parcel was not in agreement with the owner's records. According to title searches obtained on behalf of the Village by its' real estate consultant (Santa Cruz Associates), the Lombard Pines Shopping Center (Sacker Group) still had title to property that would traditionally be considered Village right-of-way.

The Sacker Group insisted that they did not own the property. In order to resolve the dispute associated with the property, the Village Attorney requested that the Sacker Group execute a Quit Claim deed to the property in question. The Village would then prepare a Plat of Dedication regarding the property. This would "clean up" the title and help prevent any challenge from a future owner of the Lombard Pines Shopping center.

Please submit this item to the Board of Trustees on their regularly scheduled meeting of January 3, 2008. If approved, please return the document to Public Works Engineering for further processing.

PLAT OF DEDICATION  
OF

120 PARK AVENUE  
LAKE VILLA, ILLINOIS 60046  
(847) 356-3371



LEGEND  
 R 5/8" Iron Rod with Division  
 O from Pipe or Rod (Found)  
 123.45' Measured Dimension  
 (67B.80') Computed Dimension  
 129.32'(Comp.) Computed Dimension

UNIT NO. 1 MELODY LANE  
 Recorded October 18, 1981  
 as Document No. R81-26791  
 Corrected by Certificate of Correction  
 Recorded November 5, 1982  
 as Document No. R82-39981

RESUBDIVISION  
 as Document No. R87-28343  
 Recorded August 7, 1987

RESUBDIVISION  
 as Document No. R86-112871  
 Recorded May 7, 1986

RESUBDIVISION  
 as Document No. R84-2771  
 Recorded June 7, 1987

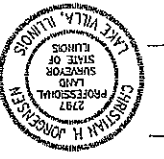
RESUBDIVISION  
 as Document No. R83-046  
 Recorded April 26, 1986

RESUBDIVISION  
 as Document No. R82-39981  
 Recorded November 5, 1982

RESUBDIVISION  
 as Document No. R81-26791  
 Corrected by Certificate of Correction  
 Recorded October 18, 1981

RESUBDIVISION  
 as Document No. R80-112871  
 Recorded May 7, 1986

RESUBDIVISION  
 as Document No. R79-112871  
 Recorded April 26, 1986



145	(60')	(634.45')
144	(120')	(86)
143	(73')	(127.38')
142	(90')	(90)
141	(120')	(98)
140	(120')	(47.24')
139	(100')	(48)
138	(67')	(98)
137	(75')	(81.22')
136	(125')	(60')
135	(125')	(60')
134	(125')	(60')
133	(75')	(60')

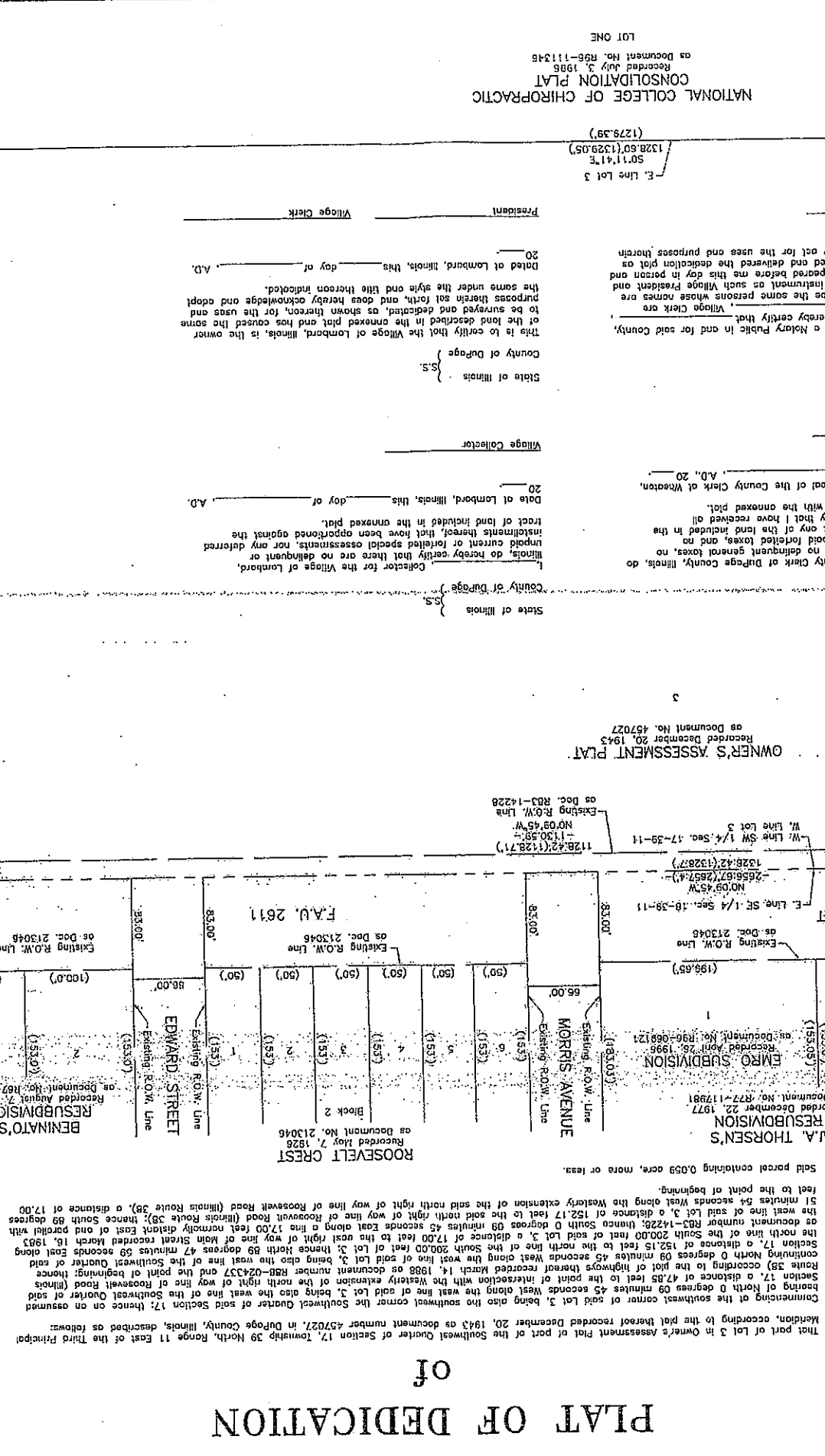
State of Illinois } S.S.  
 County of DuPage }  
 Village of Lombard, Illinois, this 20th day of \_\_\_\_\_ A.D., 20\_\_\_\_

State of Illinois } S.S.  
 County of DuPage }  
 Village of Lombard, Illinois, this \_\_\_\_\_ day of \_\_\_\_\_ A.D., 20\_\_\_\_

State of Illinois } S.S.  
 County of DuPage }  
 Village of Lombard, Illinois, this \_\_\_\_\_ day of \_\_\_\_\_ A.D., 20\_\_\_\_

State of Illinois } S.S.  
 County of DuPage }  
 Village of Lombard, Illinois, this \_\_\_\_\_ day of \_\_\_\_\_ A.D., 20\_\_\_\_

State of Illinois } S.S.  
 County of DuPage }  
 Village of Lombard, Illinois, this \_\_\_\_\_ day of \_\_\_\_\_ A.D., 20\_\_\_\_



State of Illinois } S.S.  
 County of DuPage }  
 Village of Lombard, Illinois, this \_\_\_\_\_ day of \_\_\_\_\_ A.D., 20\_\_\_\_

State of Illinois } S.S.  
 County of DuPage }  
 Village of Lombard, Illinois, this \_\_\_\_\_ day of \_\_\_\_\_ A.D., 20\_\_\_\_

State of Illinois } S.S.  
 County of DuPage }  
 Village of Lombard, Illinois, this \_\_\_\_\_ day of \_\_\_\_\_ A.D., 20\_\_\_\_

State of Illinois } S.S.  
 County of DuPage }  
 Village of Lombard, Illinois, this \_\_\_\_\_ day of \_\_\_\_\_ A.D., 20\_\_\_\_

State of Illinois } S.S.  
 County of DuPage }  
 Village of Lombard, Illinois, this \_\_\_\_\_ day of \_\_\_\_\_ A.D., 20\_\_\_\_

State of Illinois } S.S.  
 County of DuPage }  
 Village of Lombard, Illinois, this \_\_\_\_\_ day of \_\_\_\_\_ A.D., 20\_\_\_\_

State of Illinois } S.S.  
 County of DuPage }  
 Village of Lombard, Illinois, this \_\_\_\_\_ day of \_\_\_\_\_ A.D., 20\_\_\_\_

State of Illinois } S.S.  
 County of DuPage }  
 Village of Lombard, Illinois, this \_\_\_\_\_ day of \_\_\_\_\_ A.D., 20\_\_\_\_

State of Illinois } S.S.  
 County of DuPage }  
 Village of Lombard, Illinois, this \_\_\_\_\_ day of \_\_\_\_\_ A.D., 20\_\_\_\_

State of Illinois } S.S.  
 County of DuPage }  
 Village of Lombard, Illinois, this \_\_\_\_\_ day of \_\_\_\_\_ A.D., 20\_\_\_\_

State of Illinois } S.S.  
 County of DuPage }  
 Village of Lombard, Illinois, this \_\_\_\_\_ day of \_\_\_\_\_ A.D., 20\_\_\_\_

State of Illinois } S.S.  
 County of DuPage }  
 Village of Lombard, Illinois, this \_\_\_\_\_ day of \_\_\_\_\_ A.D., 20\_\_\_\_

State of Illinois } S.S.  
 County of DuPage }  
 Village of Lombard, Illinois, this \_\_\_\_\_ day of \_\_\_\_\_ A.D., 20\_\_\_\_

State of Illinois } S.S.  
 County of DuPage }  
 Village of Lombard, Illinois, this \_\_\_\_\_ day of \_\_\_\_\_ A.D., 20\_\_\_\_

State of Illinois } S.S.  
 County of DuPage }  
 Village of Lombard, Illinois, this \_\_\_\_\_ day of \_\_\_\_\_ A.D., 20\_\_\_\_

State of Illinois } S.S.  
 County of DuPage }  
 Village of Lombard, Illinois, this \_\_\_\_\_ day of \_\_\_\_\_ A.D., 20\_\_\_\_

State of Illinois } S.S.  
 County of DuPage }  
 Village of Lombard, Illinois, this \_\_\_\_\_ day of \_\_\_\_\_ A.D., 20\_\_\_\_

State of Illinois } S.S.  
 County of DuPage }  
 Village of Lombard, Illinois, this \_\_\_\_\_ day of \_\_\_\_\_ A.D., 20\_\_\_\_

State of Illinois } S.S.  
 County of DuPage }  
 Village of Lombard, Illinois, this \_\_\_\_\_ day of \_\_\_\_\_ A.D., 20\_\_\_\_

State of Illinois } S.S.  
 County of DuPage }  
 Village of Lombard, Illinois, this \_\_\_\_\_ day of \_\_\_\_\_ A.D., 20\_\_\_\_

State of Illinois } S.S.  
 County of DuPage }  
 Village of Lombard, Illinois, this \_\_\_\_\_ day of \_\_\_\_\_ A.D., 20\_\_\_\_

State of Illinois } S.S.  
 County of DuPage }  
 Village of Lombard, Illinois, this \_\_\_\_\_ day of \_\_\_\_\_ A.D., 20\_\_\_\_

State of Illinois } S.S.  
 County of DuPage }  
 Village of Lombard, Illinois, this \_\_\_\_\_ day of \_\_\_\_\_ A.D., 20\_\_\_\_

State of Illinois } S.S.  
 County of DuPage }  
 Village of Lombard, Illinois, this \_\_\_\_\_ day of \_\_\_\_\_ A.D., 20\_\_\_\_

State of Illinois } S.S.  
 County of DuPage }  
 Village of Lombard, Illinois, this \_\_\_\_\_ day of \_\_\_\_\_ A.D., 20\_\_\_\_

State of Illinois } S.S.  
 County of DuPage }  
 Village of Lombard, Illinois, this \_\_\_\_\_ day of \_\_\_\_\_ A.D., 20\_\_\_\_

State of Illinois } S.S.  
 County of DuPage }  
 Village of Lombard, Illinois, this \_\_\_\_\_ day of \_\_\_\_\_ A.D., 20\_\_\_\_

State of Illinois } S.S.  
 County of DuPage }  
 Village of Lombard, Illinois, this \_\_\_\_\_ day of \_\_\_\_\_ A.D., 20\_\_\_\_

State of Illinois } S.S.  
 County of DuPage }  
 Village of Lombard, Illinois, this \_\_\_\_\_ day of \_\_\_\_\_ A.D., 20\_\_\_\_

State of Illinois } S.S.  
 County of DuPage }  
 Village of Lombard, Illinois, this \_\_\_\_\_ day of \_\_\_\_\_ A.D., 20\_\_\_\_

State of Illinois } S.S.  
 County of DuPage }  
 Village of Lombard, Illinois, this \_\_\_\_\_ day of \_\_\_\_\_ A.D., 20\_\_\_\_

State of Illinois } S.S.  
 County of DuPage }  
 Village of Lombard, Illinois, this \_\_\_\_\_ day of \_\_\_\_\_ A.D., 20\_\_\_\_

State of Illinois } S.S.  
 County of DuPage }  
 Village of Lombard, Illinois, this \_\_\_\_\_ day of \_\_\_\_\_ A.D., 20\_\_\_\_

State of Illinois } S.S.  
 County of DuPage }  
 Village of Lombard, Illinois, this \_\_\_\_\_ day of \_\_\_\_\_ A.D., 20\_\_\_\_

State of Illinois } S.S.  
 County of DuPage }  
 Village of Lombard, Illinois, this \_\_\_\_\_ day of \_\_\_\_\_ A.D., 20\_\_\_\_

State of Illinois } S.S.  
 County of DuPage }  
 Village of Lombard, Illinois, this \_\_\_\_\_ day of \_\_\_\_\_ A.D., 20\_\_\_\_