

# VILLAGE OF LOMBARD POLICE DEPARTMENT



**Raymond Byrne**  
Chief of Police

**Thomas Wirsing**  
Deputy Chief of Operations

**Roy Newton**  
Deputy Chief of Administrative Services



**TO:** Deputy Chief Wirsing

**FROM:** Sgt. Joe Grage #754

**DATE:** 05/02/2016

**SUBJECT:** Public Safety and Transportation Committee Agenda Item-Resident Request for Parking Restriction on Elizabeth St. north of Wilson Ave.

The Police Department was forwarded a resident's concerns regarding the about street parking on Elizabeth St. north of Wilson Ave. after 3:00 PM during sporting and other events at Glenbard East High School. The resident's concern was that parking on Elizabeth St. near Wilson Ave. during these events significantly narrows the roadway to the point that it becomes a single lane.

I have examined the area and evaluated the resident's concern. I have noted the following:

1. Elizabeth St. is just under 27 feet wide north of Wilson Ave. Wilson Ave. is just over 27 feet wide in the same area and is posted "No Parking" on the north side of the roadway.
2. Elizabeth St. does become very congested during events at the high school that bring significant numbers of people there.
3. There is a stop sign for southbound traffic on Elizabeth St. at Wilson Ave. Vehicles parking on Elizabeth St. during these events frequently park within 30' of the stop sign in violation of the VOL Traffic Code. This interferes with the ability of southbound drivers to see and obey the stop sign. This creates a potentially hazardous situation because parked

[villageoflombard.org/lpd](http://villageoflombard.org/lpd)

630 / 873-4400 TDD: 630 / 620-5811

DEPT. FAX: 630 873.4496 INVESTIGATIONS FAX: 630 873.4444

235 E. Wilson Avenue Lombard, Illinois 60148

vehicles can also interfere with the ability for drivers on both Elizabeth St. and Wilson Ave. to see each other.

I took measurements of Elizabeth St. and created example diagrams based upon the width of the roadway and average widths of mid-size sedans, SUV's, and a fire engine. The diagrams clearly show that the roadway essentially becomes one way while vehicles are parked on both sides of the street. (see Figs. 1-3) This could interfere or impede the ability of emergency equipment to get to that area.

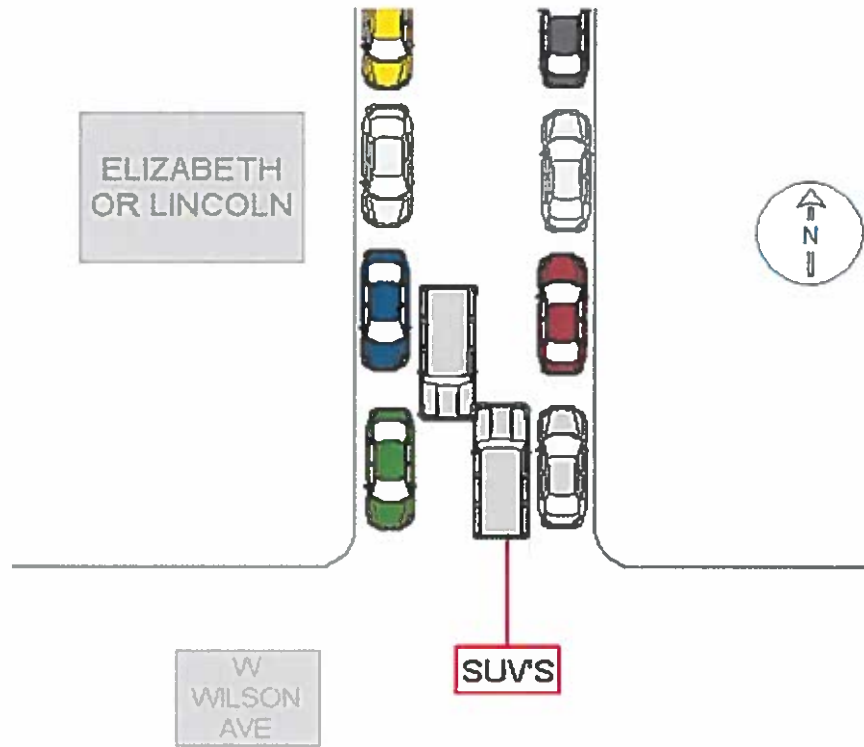
I performed the same analysis for Lincoln St. at Wilson because Lincoln St. is also located off Wilson Ave. near the high school and is the same width as Elizabeth St. I found that the same conditions that exist.

Based upon this, I recommend that Schedule VII of the VOL Traffic Code be amended to include the following parking to be prohibited at all times:

Elizabeth St. from Wilson Ave. to Graham Ave.

Lincoln St. from Wilson Ave. to Graham Ave.

**FIG. 1**



**FIG. 2**

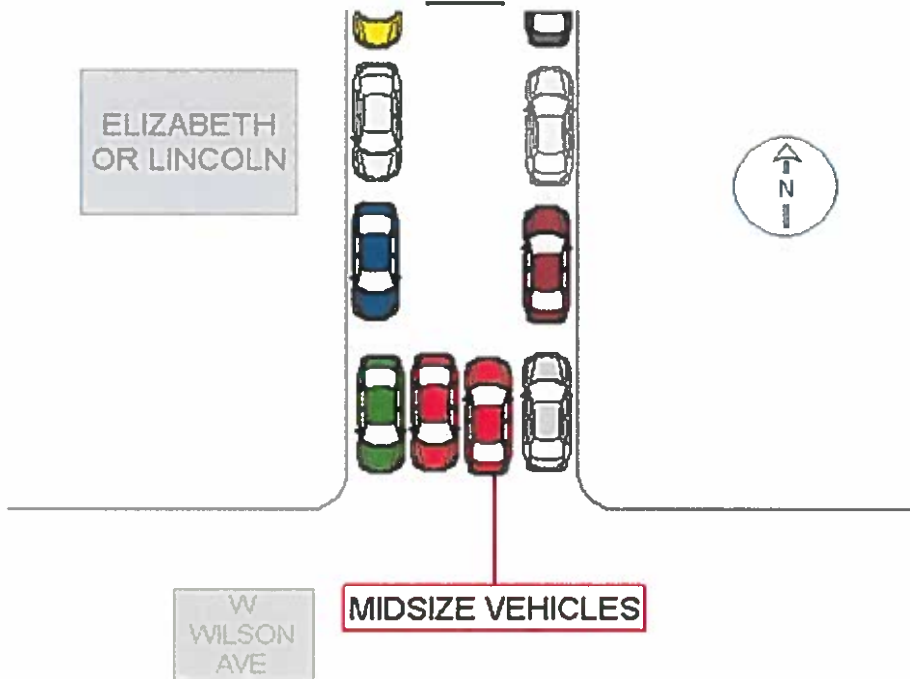


FIG. 3

