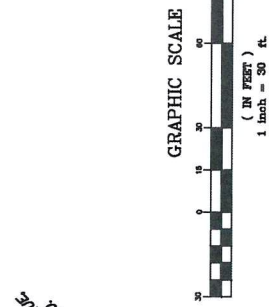


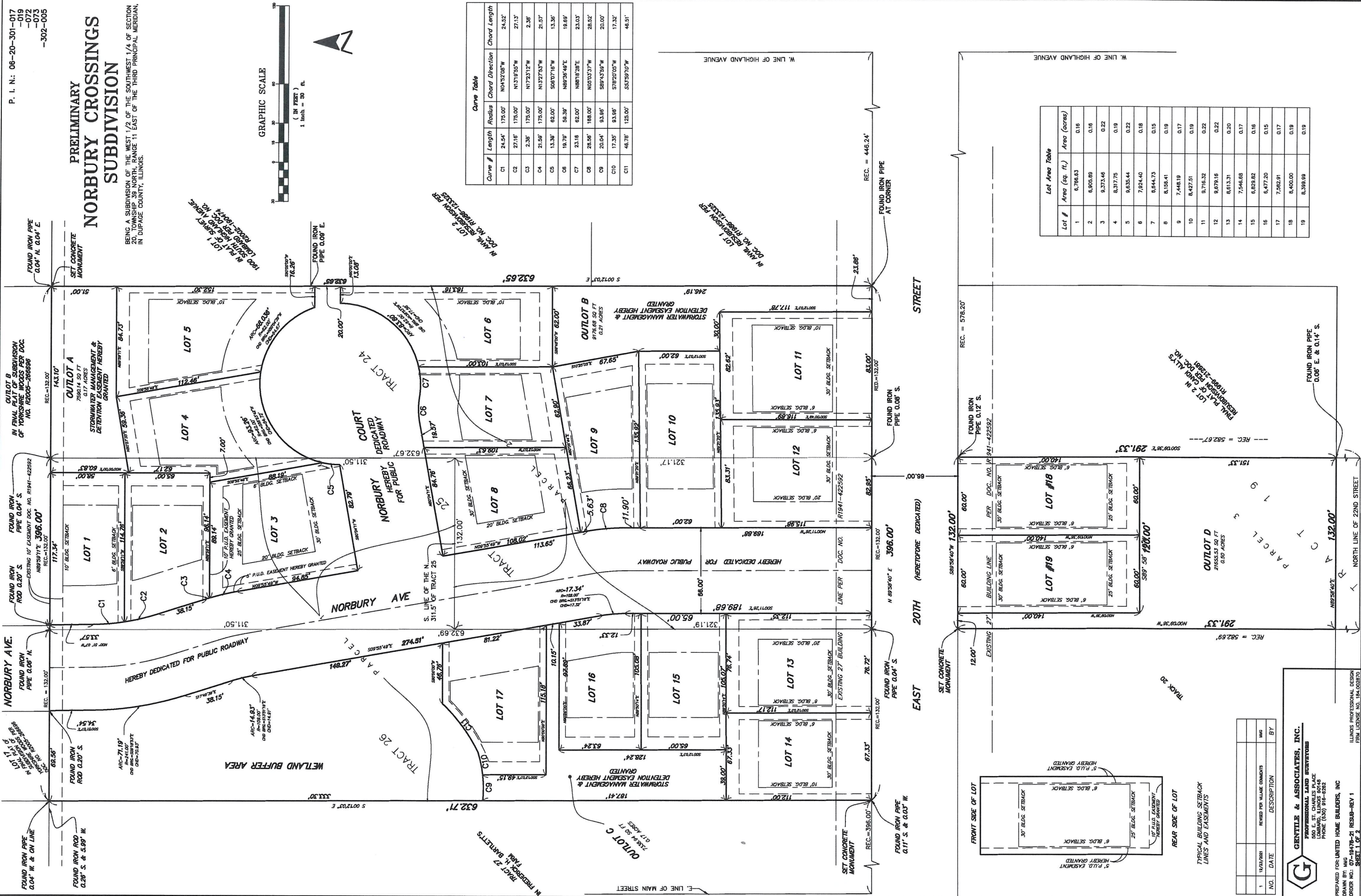
P. I. N.: 06-20-301-017
-019
-072
-073
-302-005

PRELIMINARY NORBURY CROSSINGS SUBDIVISION

BEING A SUBDIVISION OF THE WEST 1/2 OF THE SOUTHWEST 1/4 OF SECTION 20, TOWNSHIP 39 NORTH, RANGE 11 EAST OF THE THIRD PRINCIPAL MERIDIAN, IN DUPAGE COUNTY, ILLINOIS.



Curve #	Length	Radius	Chord Direction	Chord Length
C1	24.54'	175.00'	N04°52'08"W	24.52'
C2	27.18'	175.00'	N13°19'55"W	27.13'
C3	2.38'	175.00'	N72°23'12"W	2.38'
C4	21.59'	175.00'	N132°53'53"W	21.57'
C5	13.39'	92.00'	S08°07'19"W	13.36'
C6	19.79'	59.30'	N89°26'49"E	19.86'
C7	23.16'	92.00'	N88°18'29"E	23.03'
C8	28.56'	188.00'	N03°03'37"W	28.52'
C9	20.04'	93.96'	S89°43'59"W	20.00'
C10	17.35'	93.96'	S78°20'05"W	17.32'
C11	46.78'	125.00'	S55°59'59"W	46.51'



Lot #	Area (sq. ft.)	Area (acres)
1	6,786.83	0.16
2	6,905.89	0.16
3	6,373.46	0.22
4	8,317.75	0.19
5	9,635.44	0.22
6	7,924.40	0.18
7	6,544.73	0.15
8	6,198.41	0.19
9	7,446.19	0.17
10	8,427.51	0.19
11	9,716.32	0.22
12	9,679.16	0.22
13	6,613.31	0.20
14	7,546.68	0.17
15	6,659.82	0.16
16	6,477.20	0.15
17	7,562.91	0.17
18	8,400.00	0.19
19	8,399.99	0.19

NO.	DATE	REVISIONS FOR VALUE COMMENTS	DESCRIPTION	BY
1	11/21/2021			

GENTILE & ASSOCIATES, INC.
PROFESSIONAL LAND SURVEYORS
1000 W. WASHINGTON ST., SUITE 200
LANSING, ILLINOIS 60148
PHONE (815) 916-8282

PREPARED FOR: UNITED HOME BUILDERS, INC.
DRAWN BY: 07-18478-21 RESUB-REV 1
ILLINOIS PROFESSIONAL DESIGN FIRM LICENSE NO. 184-002870
SHEET 1 OF 2

