

**RESOLUTION**

**R 97-05**

**A RESOLUTION ACCEPTING PUBLIC IMPROVEMENTS AND AUTHORIZING  
SIGNATURE OF THE PRESIDENT AND CLERK ON A PLAT OF  
EASEMENT/DEDICATION FOR ST. REGIS DRIVE AND NORTH LAKE ROAD**

WHEREAS, the Corporate Authorities entered into a Jurisdiction Transfer Agreement (hereinafter the "Agreement") dated January 17, 2002, pursuant to Resolution No. R-113-02, with the St. Regis Development Association, pursuant to which the Village agreed to accept the St. Regis Drive and North Lake Road right-of-ways as Village right-of-ways upon completion of the Final Upgrade Plan Work, as defined in the Agreement, the submittal of a Bill of Sale and Plat of Easement/Plat of Dedication, as required by Section 3 of said agreement, and compliance by the St. Regis Development Association with certain additional conditions as set forth in Section 4 of said Agreement; and

WHEREAS, the St. Regis Development Association has provided the Village with documents referenced in Sections 3 and 4 of said Agreement, and has otherwise complied with the additional conditions set forth in Section 4 of the Agreement; and

WHEREAS, the Private Engineering Services Division of the Village of Lombard has reviewed the documents received from the St. Regis Development Association and, based on said review, recommends that the Public Improvements, as defined in said Agreement, be accepted by the Village, except for those Public Improvements which are to remain the responsibility of others; and

WHEREAS, the Corporate Authorities concur with said recommendation.

NOW, THEREFORE, BE IT RESOLVED BY THE PRESIDENT AND BOARD OF TRUSTEES OF THE VILLAGE OF LOMBARD, DU PAGE COUNTY, ILLINOIS, AS FOLLOWS:

SECTION 1: That the Village President and Clerk be and hereby are authorized to sign, on behalf of the Village of Lombard, the Plat of Easement/Plat of Dedication attached hereto as Exhibit "A" and made part hereof.

SECTION 2: That the Public Improvements, as defined in said Agreement, and as constructed pursuant to the Final Upgrade Plan Work, as defined in said Agreement, be and hereby are accepted and made part of the Village of Lombard's public utility system, except as referenced in Section 3 below.

SECTION 3: That the stormwater detention basins shall remain the responsibility of others, as stated on Exhibit "A" attached hereto.

Resolution No. 97-05

Re: St. Regis Drive and North Lake Road

Page 2

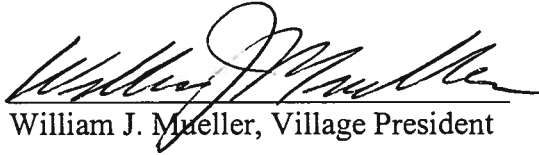
Adopted this 20th day of January, 2005, pursuant to a roll call vote as follows:

Ayes: Trustees Williams, Tross, Koenig, Sebby, Florey and Soderstrom


Nays: None

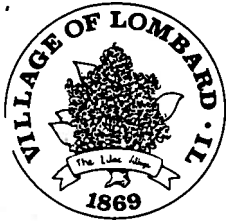
Absent: None

Approved by me this 20th day of January, 2005.

  
William J. Mueller, Village President

ATTEST:

  
Barbara A. Johnson, Deputy Village Clerk



**ACCEPTANCE OF PUBLIC IMPROVEMENTS FOR  
THE ST. REGIS DRIVE AND NORTH LAKE ROAD RECONSTRUCTION  
PROJECT**

We, as representatives of the Village of Lombard, certify that the public water mains, fire hydrants, sanitary sewers, storm sewers, street lighting, signage, pavement, sidewalks and parkway trees for the St. Regis Drive and North Lake Road reconstruction project have been constructed substantially per plan and have passed all required tests.

We recommend acceptance by the Village President and the Board of Trustees of the Village of Lombard.

Recommended for acceptance:

David P. Gorman, PE, Development Engineer  
Private Engineering Services Division

  
David A. Hulseberg, AICP, Director  
Department of Community Development  
Wesley B. Anderson, PE, Director  
Department of Public Works

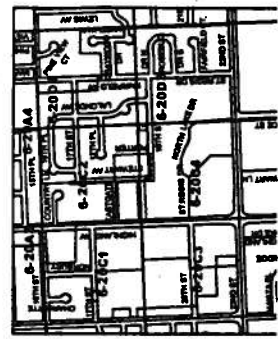
**ATTENTION TO ALL INDIVIDUALS USING THIS MAP**

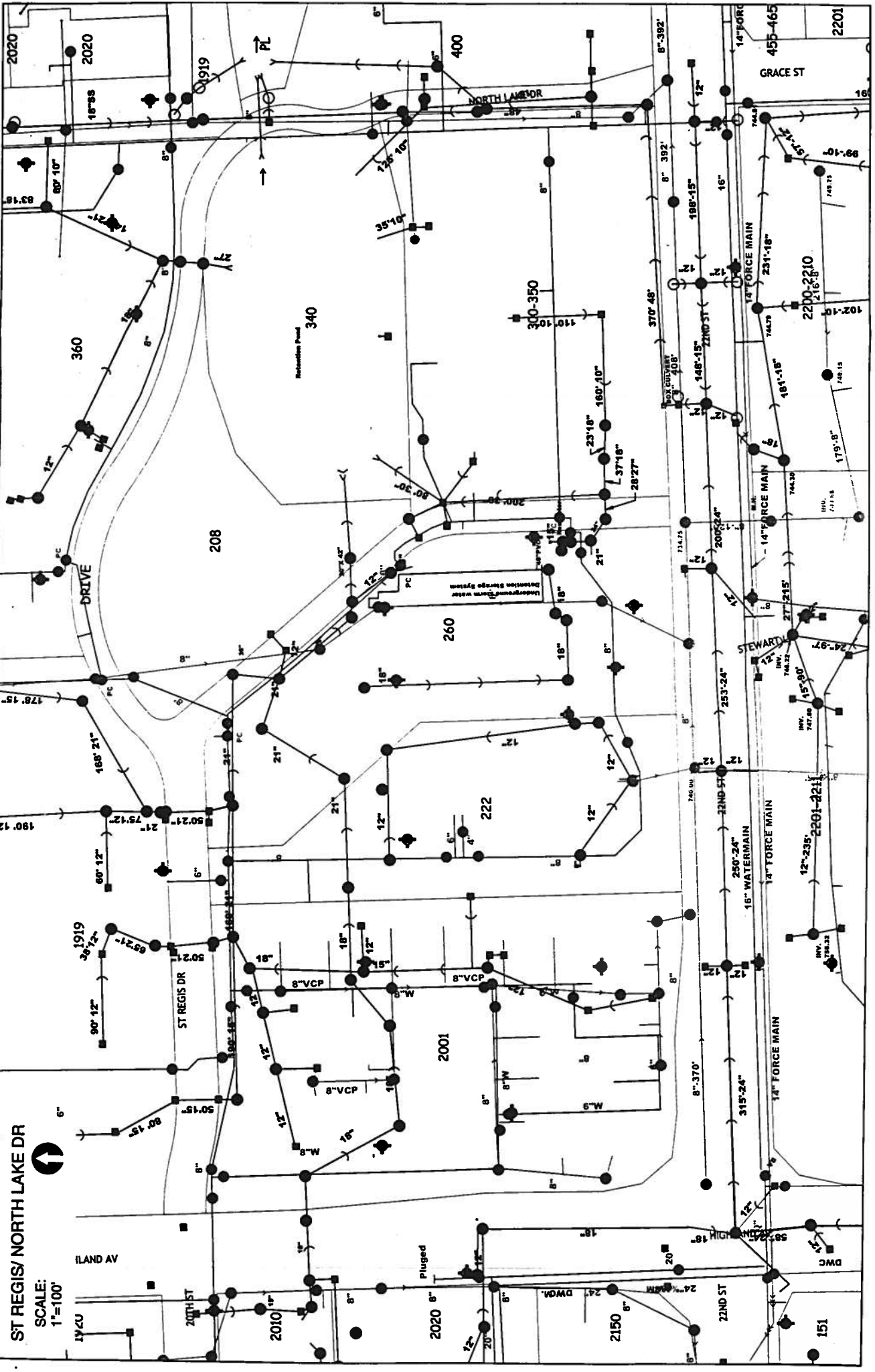
Although the Village of Lombard has made every effort to accurately depict the location of all utilities, in some instances utility locations have had to be approximated based upon very old or incomplete records. As such, the use of this map should not be a substitute for actually physically locating the utilities prior to any construction in the area of said utilities or any attempted connection thereto.

	<b>WATER DISTRIBUTION</b> Watermain Water Valve Fire Hydrant B-Box Valve Box Multiple B-Box in lift (Octopus) Butterfly Valve
	<b>WASTEWATER DISTRIBUTION</b> Sanitary Sewers Sanitary Manholes Cleanout Highland Hills Sanitary
	<b>STORM WATER DISTRIBUTION</b> Storm Sewers Storm Manholes Catch Basins Inlets
	<b>EASEMENTS</b>
	<b>VILLAGE BOUNDARY</b>
	<b>INTERMUNICIPAL BOUNDARY AGREEMENT</b>



**SCALE:**  
1" = 100'





ST REGIS/NORTH LAKE DR  
SCALE:  
1"=100'



Plugged

24' DWQ.  
24' DWQ.

2150 8"

2220 8"

151