

May 25, 2011

**VILLAGE OF LOMBARD
255 E. WILSON AVE.
LOMBARD, IL 60148
Attn: Mr Paul Kuehnlenz**

RE: Advance Deposit for Engineering

This letter is in response to your request for relocation of electric lines on **THE GREAT WESTERN TRAIL, EAST OF GRACE ST., IN LOMBARD**. Based on the preliminary information that you have provided to ComEd, it has been determined that your project will require installation, relocation, or removal of facilities that are above 'standard' – that is, facilities that are more than provided for in the basic service covered in ComEd's rates. An 'optional facilities payment' is required from the customer in such situations. The optional facilities payment amount due can only be determined upon completion of the engineering and design plans for your project.

To complete the detailed engineering and provide contracts with the actual optional facilities payment due for your project, ComEd requires a non-refundable deposit in the amount of **\$42,200.00**. This deposit will cover the engineering costs associated with your request to **relocate electric lines**. **The preliminary scope of this work includes the removal of 4 poles, the installation of 3 poles, and the replacement of 6 poles to re-route the line to the Northern boundary of the Great Western Trail.**

If you would like ComEd to complete the final design and prepare the necessary contract documents for your project, please **sign below and return this letter along with the required deposit amount** within 30 days to **1N423 Swift Rd, Lombard, IL 60148**.

If you ultimately decide to move forward with this project, the advance deposit for engineering will be credited against the final optional facilities payment amount. If you choose not to proceed with the work, the deposit will be retained by ComEd to cover the engineering costs associated with your project. If you have requested multiple design options, you will only receive a credit for the option that you choose to authorize for construction.

If this signed letter and deposit payment amount are not returned within 30 days, ComEd will consider your request for service cancelled.


If you have any questions, please feel free to contact me at **630-424-5707**.

Sincerely,

Scott Netko

Scott Netko
Project Engineer
Regional Engineering, Glenbard

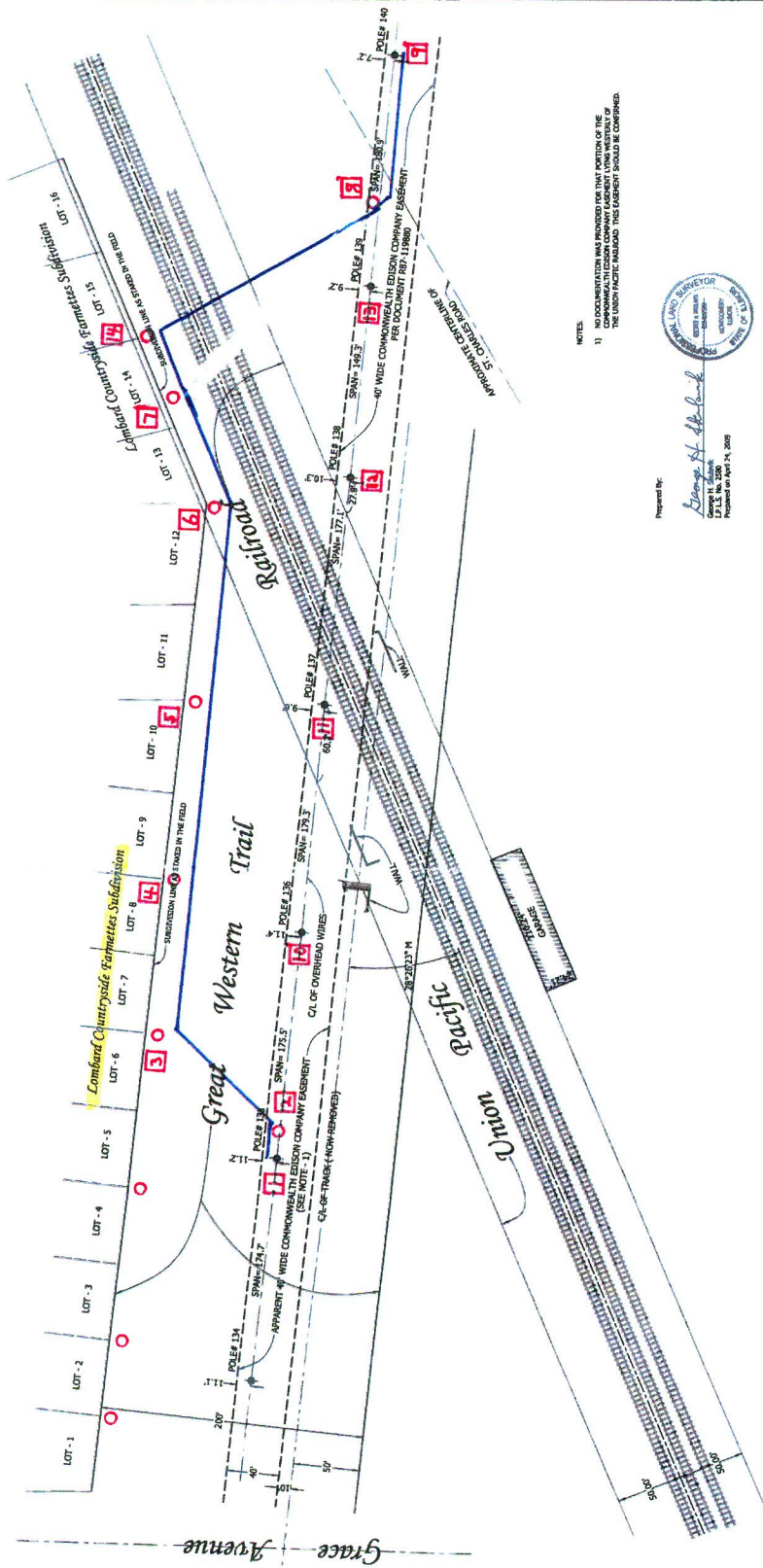

Customer Signature


Date

Exhibit

of
Part of the Southeast Quarter of Section 5,
Township 39 North, Range 11 East of the Third
Principal Meridian, DuPage County, Illinois.

- ABBREVIATION LEGEND**
- CL - CENTERLINE
 - (P) - RECORD DISTANCE
 - (R) - RECORD DISTANCE
- SYMBOL LEGEND**
- EXISTING ROAD THROTS
 - WOOD UTILITY POLE



NOTES:

- NO DOCUMENTATION WAS PROVIDED FOR THE PORTION OF THE COMMONWEALTH EDISON COMPANY EASEMENT LYING WEST OF THE UNIDENTIFIED EASEMENT. THIS EASEMENT SHOULD BE CONFIRMED.



Prepared By:
George H. Hoff
Professional Engineer
No. 0208
Exp. 12/31/09

<p>ComEd A Caten Company</p>		<p>RUSSELL WAID DILLON SURVEYING SERVICES THREE LINCOLN CENTRE OAKBROOK TERRACE, ILL. 60181 PHONE: (630)876-7665 FAX: (630)876-2117</p>		<p>RIDGELINE CONSULTANTS 1661 AUCUTT ROAD MONTGOMERY, IL 60638 (630)-801-7827</p>	<table border="1"> <thead> <tr> <th>NO.</th> <th>REVISIONS</th> <th>DESCRIPTION</th> </tr> </thead> <tbody> <tr> <td>1</td> <td>4-27-09</td> <td>NOTE - ADDRESS & TEXT CHANGES</td> </tr> <tr> <td>2</td> <td>5-4-11</td> <td>ADD APPROXIMATE CENTERLINE OF ST. CHARLES ROAD</td> </tr> <tr> <td>3</td> <td></td> <td></td> </tr> <tr> <td>4</td> <td></td> <td></td> </tr> </tbody> </table>	NO.	REVISIONS	DESCRIPTION	1	4-27-09	NOTE - ADDRESS & TEXT CHANGES	2	5-4-11	ADD APPROXIMATE CENTERLINE OF ST. CHARLES ROAD	3			4			<p>APPROVED BY: GHS</p> <p>CHECK BY: GHS</p>	<p>Wire Exhibit of part of the Great Western Trail Prairie Path Lombard, DuPage County, Illinois</p>	<p>DATE: 4/28/09 SCALE: 1" = 40'</p>
NO.	REVISIONS	DESCRIPTION																					
1	4-27-09	NOTE - ADDRESS & TEXT CHANGES																					
2	5-4-11	ADD APPROXIMATE CENTERLINE OF ST. CHARLES ROAD																					
3																							
4																							
<p>OFFICE: GHS JOB NO.: 2009-0088 ELECT: TAC 2009-0088</p>	<p>FIELD: POM CAD: JFC CONTRACT NO.: 0034323</p>	<p>ORDER NO.: 09-008</p>	<p>SHI NO.: 1 AUP1</p>																				

GREAT WESTERN TRAIL

POLE LINE RELOCATION

- Loc. 1 Reconfigure wood arms (Cost: Approx. \$16.5k)
- Loc. 2 Install new pole and equipment (Cost: Approx. \$31.2k)
- Loc. 3 Replace pole with taller pole; install second electric line. (Cost: Approx. \$31.1k)
- Loc. 4 Replace pole with taller pole; install second electric line. (Cost: Approx. \$35.5k)
- Loc. 5 Replace pole with taller pole; install second electric line. (Cost: Approx. \$33.3k)
- Loc. 6 Replace pole with taller pole; install second electric line. (Cost: Approx. \$34k)
- Loc. 7 Replace pole with taller pole; install second electric line. (Cost: Approx. \$35.2k)
- Loc. 8 Install new pole and equipment (Cost: Approx. \$34k)
- Loc. 9 Reconfigure wood arms (Cost: Approx. \$16.5k)
- Loc. 10 Remove pole and equipment (Cost: Approx. \$13.6k)
- Loc. 11 Remove pole and equipment (Cost: Approx. \$11.3k)
- Loc. 12 Remove pole and equipment (Cost: Approx. \$11.3k)
- Loc. 13 Remove pole and equipment (Cost: Approx. \$22.6k)
- Loc. 14 Install new pole and equipment (Cost: Approx. \$34k)
- Other: This includes Engineering, work between locations, etc. (Cost: Approx. \$61.9k)