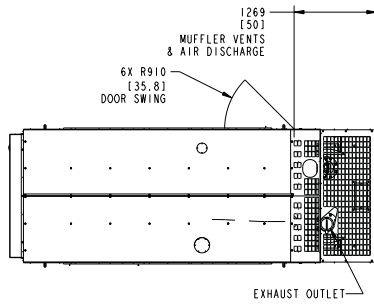


TANK/LIFT BASE FEATURE CODE	TANK CAPACITY	TANK WEIGHT DRY KG (LBS)	DIM_D	DIM_E	DIM_F	DIM_G	DIM_H	DIM_I	DIM_J	DIM_K		
C201	300	1060 (2338)	2643 (104)	183 (7.2)	305 (12)	1625.6 (64.0)	1447.6 (57.0)	1371.8 (54.0)	526 (20.7)	1126 (44.3)	1122 (44.2)	614.7 (24.2)
C202/C242	400/270	1105 (2438)	2694 (106)	234 (9.2)	356 (14)	1676.6 (66.0)	1498.6 (59.0)	1422.8 (56.0)	577 (22.7)	1177 (46.3)	1173 (46.2)	665 (26.2)
C203	500	1171 (2584)	2743 (108)	284 (11.2)	406 (16)	1726.6 (68.0)	1548.6 (61.0)	1472.8 (58.0)	627 (24.7)	1228 (48.3)	1224 (48.2)	716.3 (28.2)
C204	600	1253 (2765)	2819 (111)	361 (14.2)	483 (19)	1803.6 (71.0)	1625.6 (64.0)	1549.8 (61.0)	704 (27.7)	1304 (51.3)	1300 (51.2)	792.5 (31.2)
C205	660	1295 (2857)	2858 (112.5)	399 (15.7)	521 (20.5)	1841.6 (72.5)	1663.6 (65.5)	1587.8 (62.5)	742 (29.2)	1343 (52.8)	1339 (52.7)	830.6 (32.7)
C206	720	1275 (2814)	2895 (114)	437 (17.2)	559 (22)	NA	NA	1625.8 (64.0)	780 (30.7)	1381 (54.3)	1377 (54.2)	868.7 (34.2)
C207	850	1445 (3189)	2997 (118)	538 (21.2)	660 (26)	1980.6 (78.0)	1802.6 (71.0)	NA	881 (34.7)	1481 (58.3)	1478 (58.2)	970.3 (38.2)
F214	NA	NA	2540 (100)	81 (3.2)	203 (8)	1523.6 (60.0)	1345.6 (53.0)	1371.8 (54.0)	1024 (40.3)	1021 (40.2)	513.1 (20.2)	

REL NO	REV	NO	REVISION	DATE
ECO-137473	D	1	SEPARATED DIM.G BY MODEL, ZONE D4	30AUG13
		2	SEE SHEET 4	30AUG13

OPTIONAL FEATURE F202,F205

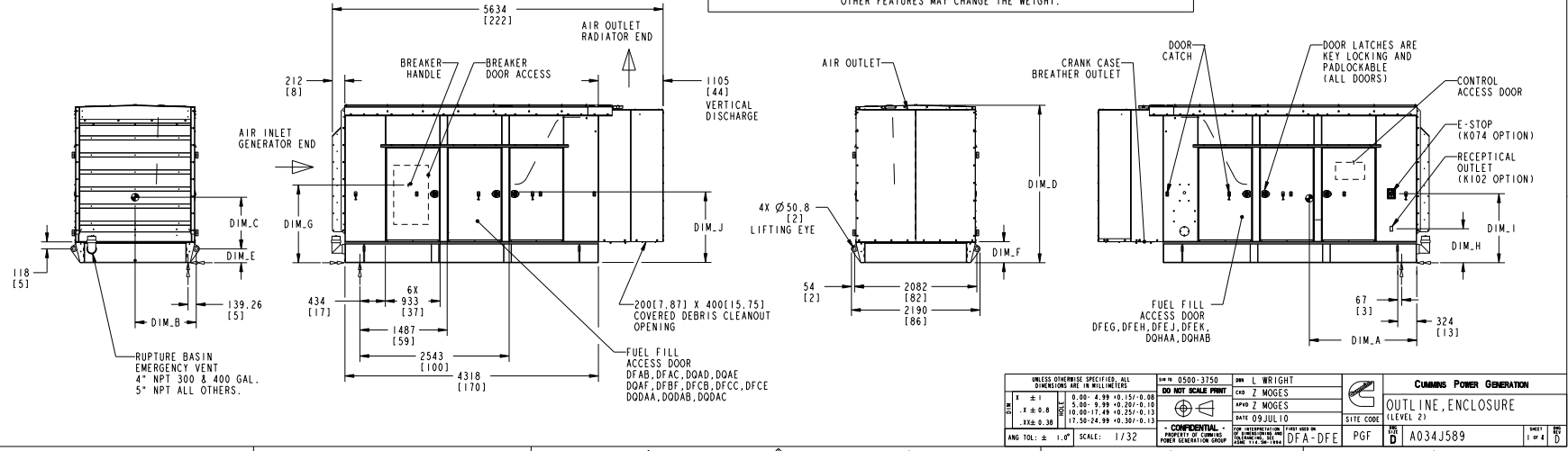


MODEL	KW	CG_DIM "A"	CG_DIM "B"	CG_DIM "C"	STEEL ENCLOSURE WEIGHT KG (LBS)	ALUMINUM ENCLOSURE WEIGHT KG (LBS)
DFAB	230	2111 [83.1]			869 [34.2]	5755 (12688)
DFAC	250	2103 [82.8]			866 [34.1]	5823 (12838)
DOAD	250	2103 [82.8]			869 [34.2]	5914 (13038)
DOAE	275	2093 [82.4]			871 [34.3]	6027 (13288)
DOAF	300	2085 [82.1]			881 [34.7]	6387 (14078)
DFBF	275	2049 [80.7]			884 [34.8]	6522 (14378)
DFCB	300	2035 [80.1]			886 [34.9]	6635 (14628)
DFCC	350	2014 [79.3]			889 [35.0]	6735 (14848)
DFCE	400	1999 [78.7]			734 [28.9]	7743 (17072)
DFEG	350	1994 [78.5]			737 [29.0]	7873 (17358)
DFEH	400	1976 [77.8]			724 [28.5]	8026 (17696)
DFEJ	450	1956 [77.0]			723 [28.5]	8162 (17996)
DFEK	500	1933 [76.1]			724 [28.5]	8057 (17388)
DODAA	250	1927 [75.9]			724 [28.5]	6057 (13388)
DODAB	275	1927 [75.9]			869 [34.2]	6271 (13826)
DODAC	300	1945 [76.6]			871 [34.3]	6384 (14076)
DOHAA	275	2093 [82.4]				5781 (12736)
DOHAB	300	2085 [82.1]				5894 (12986)

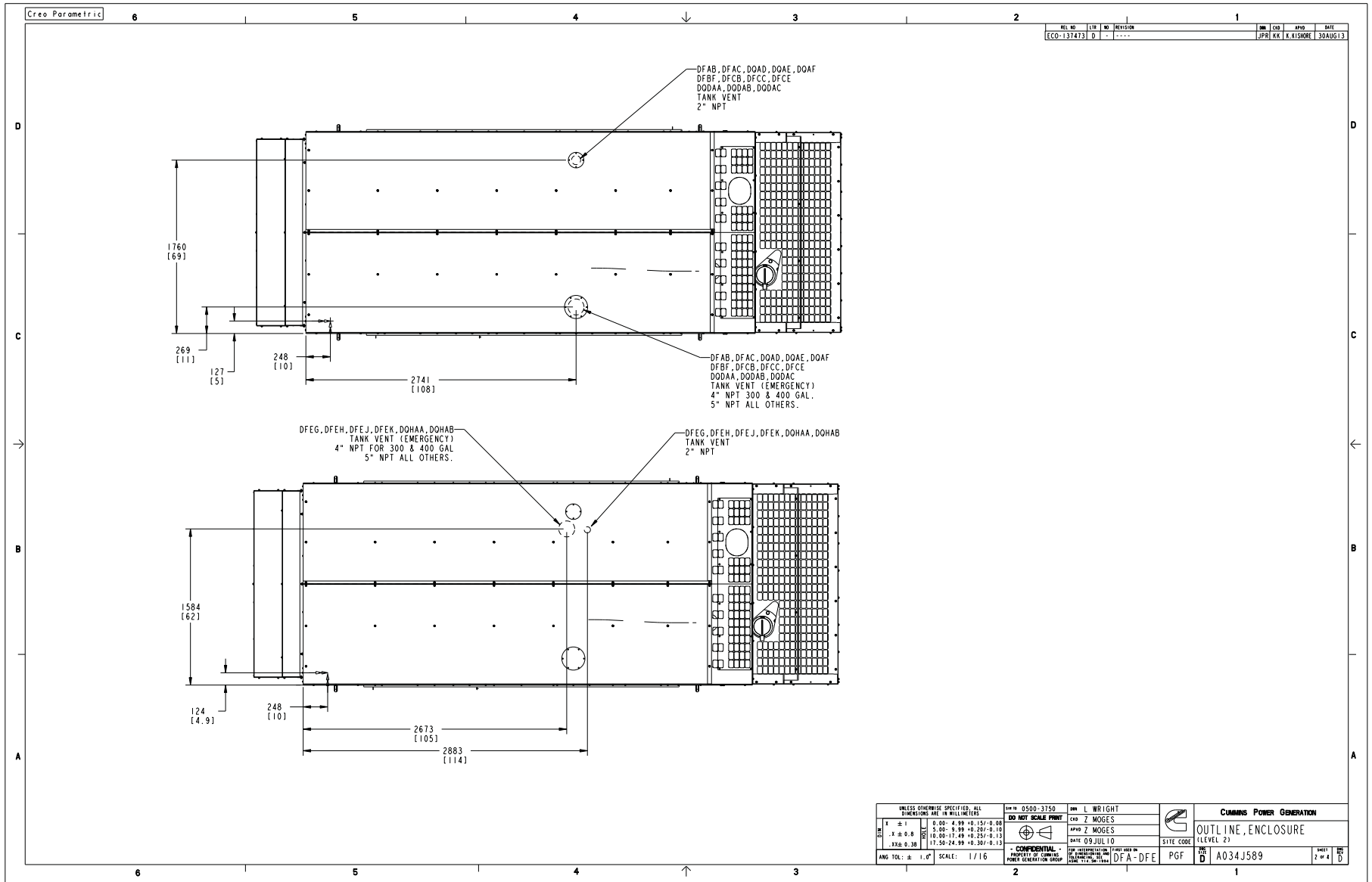
1041 [41]

***WEIGHT & CG'S ARE SHOWN WITH HIGHEST GALLON FUEL TANK, ENCLOSURE, AND STANDARD NET GENSET. ADDITION OF OTHER FEATURES MAY CHANGE THE WEIGHT.

- NOTES:
- DIMENSIONS SHOWN IN [] ARE INCHES.
 - FOUNDATION REFERENCE POINT (---) SEE FOUNDATION DRAWING FOR DETAILS.
 - FOR FEATURE CODE L116 (FLORIDA STATES) ADD 105.6 (4.16") TO DIMS D-J
 - SEE SHEET 2 FOR TANK VENT LOCATIONS.
 - EXCESSIVE TWISTING OF THE FUEL TANK, WHEN FASTENING IT TO A FOUNDATION, MAY RESULT IN STRUCTURAL FAILURE OF THE TANK. TO INSURE THE INSTALLATION DOES NOT EXCESSIVELY TWIST THE FUEL TANK, THE FOLLOWING PROCEDURE MUST BE OBSERVED:
 - REFER TO ONAN APPLICATION MANUAL T030 FOR GENERAL GENSET/TANK MOUNTING GUIDELINES.
 - (NOTE REMOVED)
 - (NOTE REMOVED)
 - (NOTE REMOVED)
 - TIGHTEN TANK HOLD DOWN MOUNTING FASTENERS.



UNLESS OTHERWISE SPECIFIED, ALL DIMENSIONS ARE IN MILLIMETERS	0500-3750	WRIGHT	CUMMINS POWER GENERATION
ANG TOL: ± .01"	SCALE: 1/32	DATE 09 JULIO	OUTLINE ENCLOSURE (LEVEL 2)
PROPERTY OF CUMMINS POWER GENERATION GROUP	CONFIDENTIAL	PGF	A034J589



UNLESS OTHERWISE SPECIFIED, ALL DIMENSIONS ARE IN MILLIMETERS		REV: 0500-3750	APP: L WRIGHT	CUMMINS POWER GENERATION	
DATE	SCALE	REV: 0500-3750	APP: 2 WOGES	OUTLINE, ENCLOSURE (LEVEL 2)	
1 ± 1	0.00-4.99 ± 0.15/± 0.08	ED: NPT SCALE PRINT	APP: 2 WOGES	SITE CODE	
2 ± 0.8	5.00-9.99 ± 0.20/± 0.10		DATE 09 JUL 10	PGF	
3 ± 0.8	10.00-17.49 ± 0.25/± 0.13			A034J589	
4 ± 0.38	17.50-24.99 ± 0.30/± 0.13			2 of 4	
ANG TOL: ± 1.0°	SCALE: 1/16	- CONFIDENTIAL -			
		PROPERTY OF CUMMINS POWER GENERATION GROUP			