

220117



December 6, 2022

TO: Public Works & Environmental Concerns Committee
FROM: Carl Goldsmith, Director of Public Works *g*
SUBJECT: Fleet Facility Expansion Project

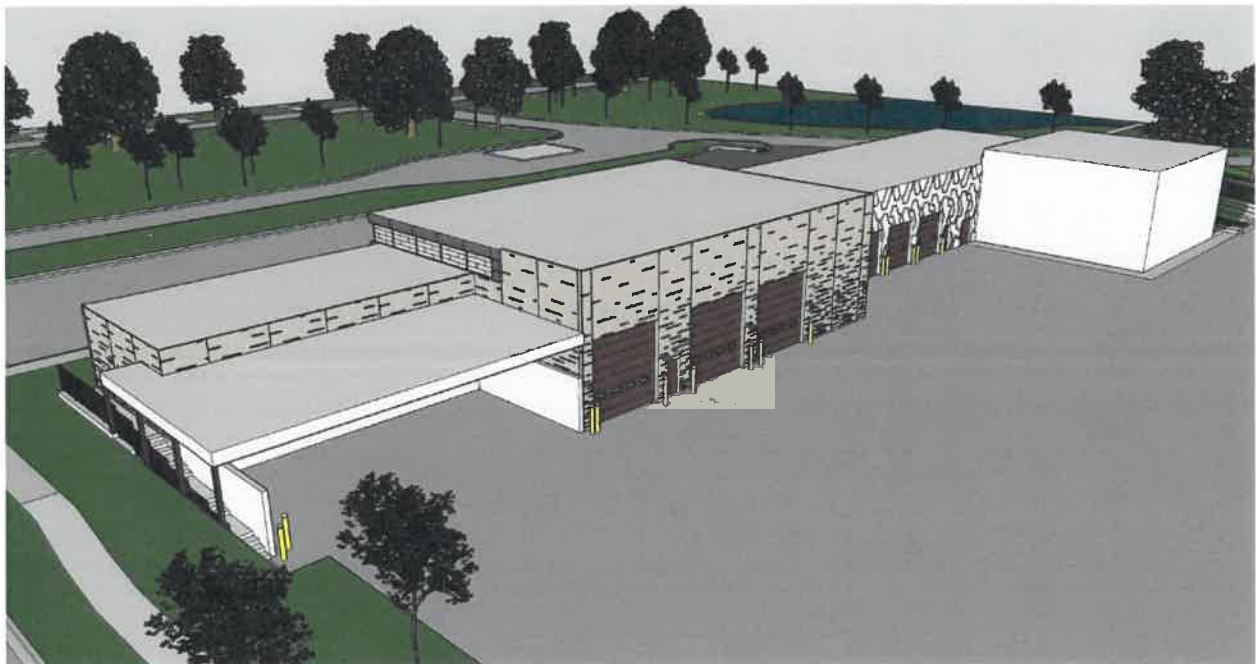
The Village of Lombard Public Works Facility was constructed as part of the Village Hall complex in 1972. The facility includes four repair bays that average of 11 feet wide and 40 feet long from the door to the back wall. Two bays are configured as flat floor bays while one is equipped with a 12,000-pound capacity surface mounted automotive lift and another equipped with an in-ground 43,000-pound capacity two post axle engaging lift. The bays are accessed by 12-foot-high by 12-foot-wide overhead doors. The limited width of the doors results in difficult maneuvering of large vehicles (especially those equipped with plows) in and out of the bays. The limited height of the doors coupled with the short bay length results in the inability to raise several of the fire apparatus to full lift height. Since 1972, the Village's fleet has grown in terms of number of pieces of equipment and the sheer size of the equipment. As a result, the garage is unable to accommodate a number of pieces of equipment, which results in additional outside repairs or vehicles being repaired by Village personnel outside of the garage.

The Village has conducted a number of studies or planning efforts to address the deficient conditions. The following studies have been conducted:

1. *Final Report for Fleet Maintenance* prepared by Rust Environment & Infrastructure/PB Fleet Maintenance Consultants dated January 27, 1997
2. *Schematic Design Report - Fleet Maintenance Facility* prepared by EARTHTECH dated November 5, 2001
3. *Village of Lombard Fleet Services Facility Master Planning* prepared by Kluber Architects + Engineers dated July 11, 2018

In 2022, the Village solicited RFQs from qualified architectural firms to perform a design for the expansion. TRIA Architects out of Burr Ridge, IL was selected. The Village and architect have worked on numerous design concepts and have reached concept agreement and development of 75% plans. These plans are currently under review.

The project will add approximately 10,000 square feet onto the existing facility. The project includes the construction of two 60' heavy equipment truck bays, a 60' wash bay, covered indoor storage, an exterior material bay and rehabilitation of the existing fleet facility. In order to accommodate the addition, the access drive to the Public Works yard will be removed and replaced with a new drive approximately 40' east. The entire yard



Staff is presenting these concepts as information only and is not seeking a recommendation at this time. This matter will be discussed at the December 13, 2022 PWECC meeting. Should you have any questions, please feel free to contact me.