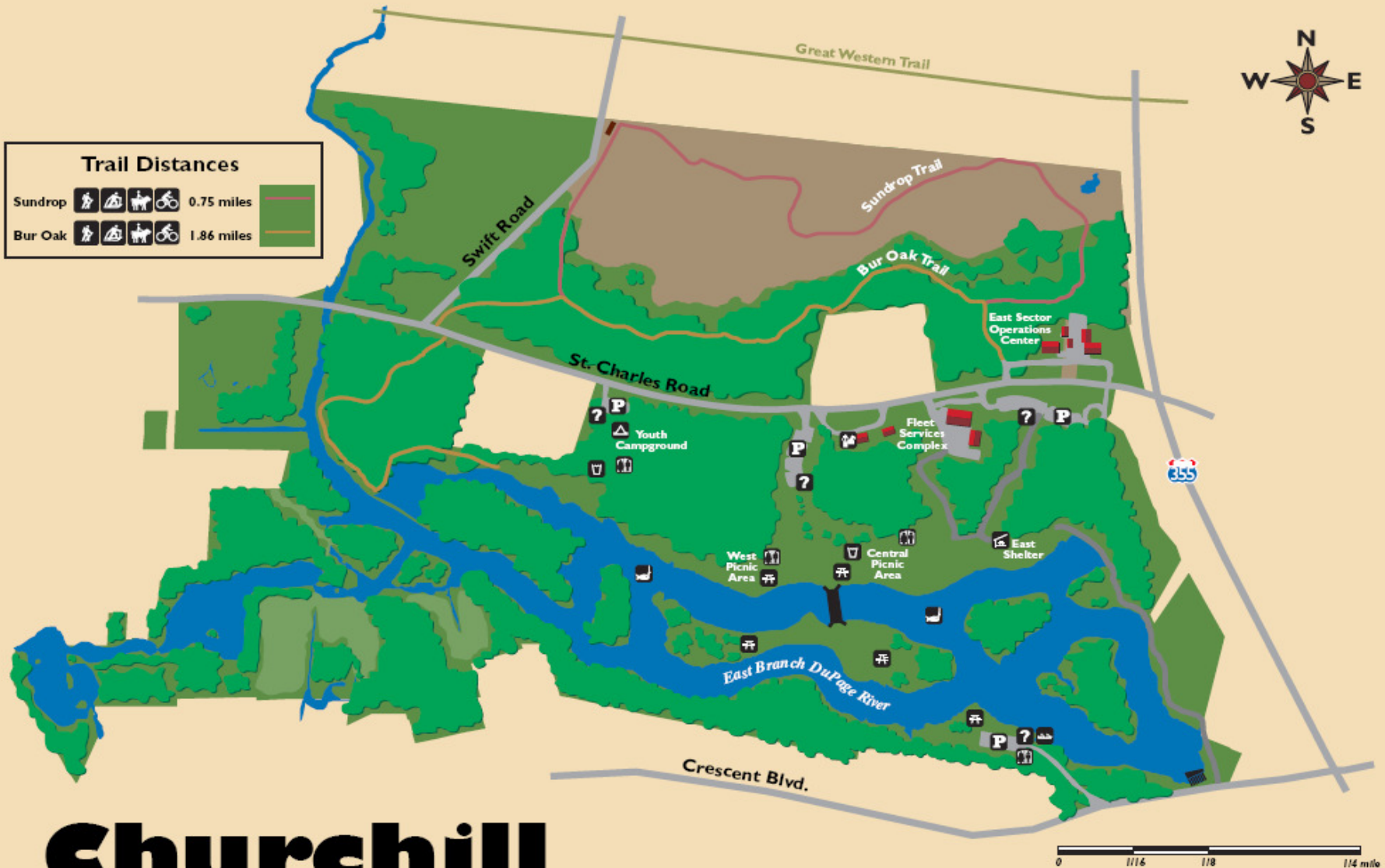




Responding to the DO TMDL on  
East Branch DuPage River  
Churchill Woods River Restoration

# Presentation Overview

- Churchill Woods
- The Federal Clean Water Act (CWA), the NPDES Program and Total Maximum Daily Loads (TMDLs)
- Formation and Goals of the DuPage River Salt Creek Workgroup (DRSCW)
- Problem Analysis – Dissolved Oxygen and Biological results for Salt Creek
- Project Outline
- Schedule



# Churchill Woods

## FOREST PRESERVE

- |            |              |                 |                  |
|------------|--------------|-----------------|------------------|
| Wetland    | Service Road | Parking         | Canoe Launch     |
| Open Water | Structures   | Information     | Youth Campground |
| Meadows    | Bench        | Water           | Fishing          |
| Woodlands  | Dam          | Latrines        | Hiking           |
| Prairie    | Bridge       | Picnic          | Biking           |
| Main Road  |              | Shelter         | Equestrian       |
|            |              | Guard Residence | Skiing           |

# State and Federal Laws

## Regulatory Objectives

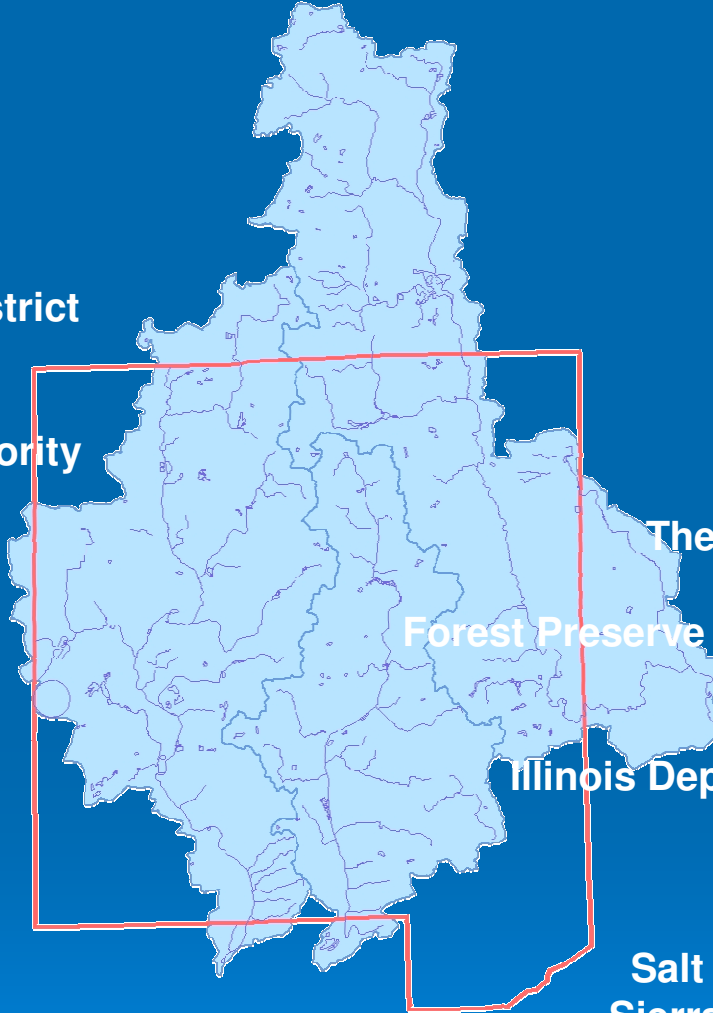
- Clean Water Act 1972
- National Pollution Discharge Elimination System (NPDES) permits (Phase I and II)
- Developing Total Maximum Daily Loads (TMDLs) for Salt Creek
- Meet minimum requirement of the Clean Water Act for local waterways “fishable and swimmable”

# DuPage River Salt Creek Workgroup (DRSCW)

- POTW managers respond to TMDL conclusions
- Develop a basin wide response to remaining water quality impairments
- The most cost effective and highest likelihood of success
- Include all stakeholders in the process
- Strong IEPA support

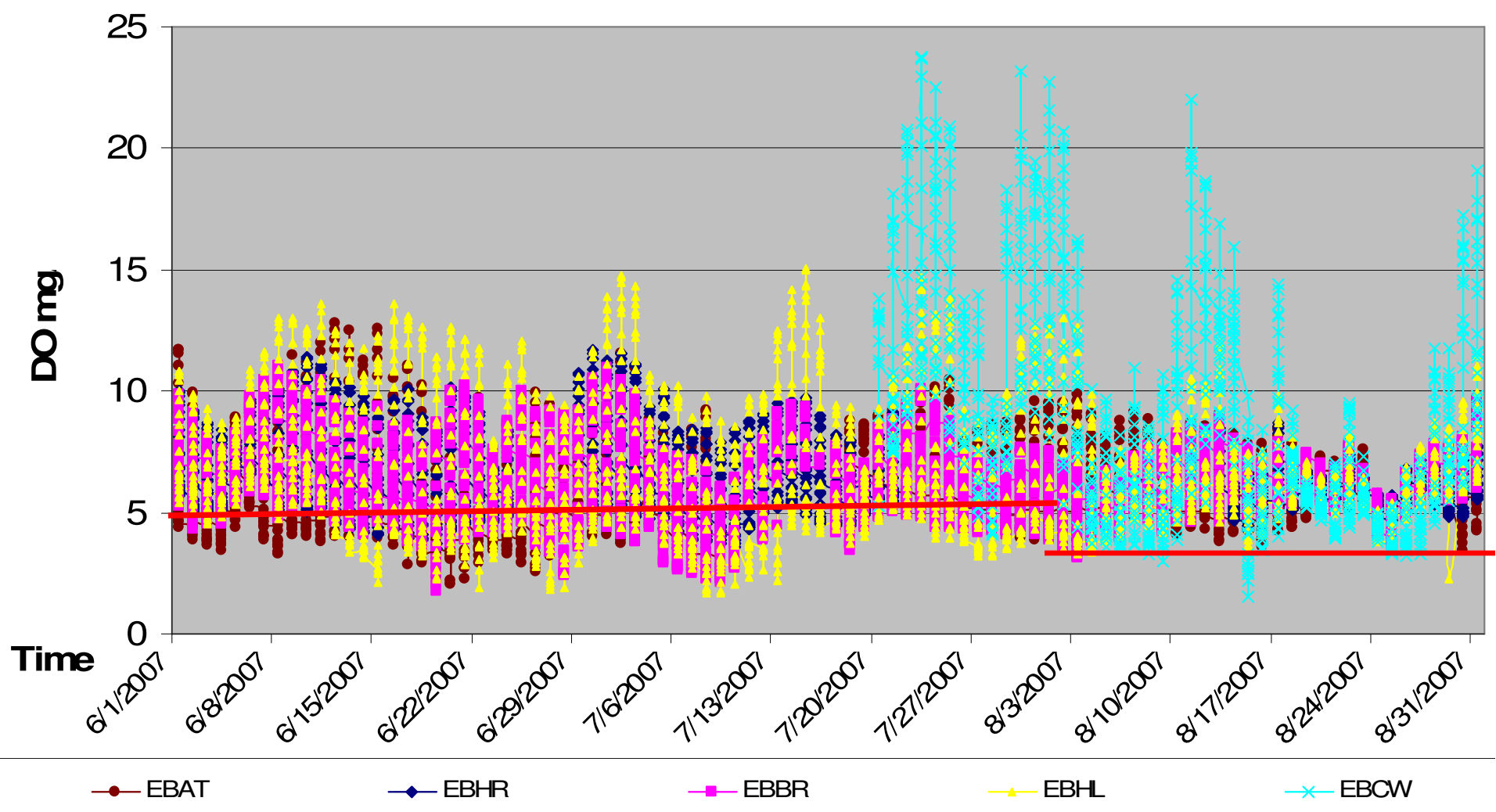
# DRSCW

Village of Addison  
Village of Arlington Heights  
Village of Bensenville  
Village of Bloomingdale  
Village of Bolingbrook  
Village of Carol Stream  
Village of Downers Grove  
Elkgrove Village  
Downers Grove Sanitary District  
DuPage County  
City of Elmhurst  
Glenbard Waste Water Authority  
Village of Glen Ellyn  
Village of Glendale Heights  
Village of Hanover Park  
Village of Hinsdale  
Village of Hoffman Estates  
Village of Itasca  
Village of Lisle  
Village of Lombard  
MWRDGC  
City of Naperville  
Village of Northlake  
Village of Oak Brook  
City of Oakbrook Terrace  
Village of Roselle  
City of St. Charles



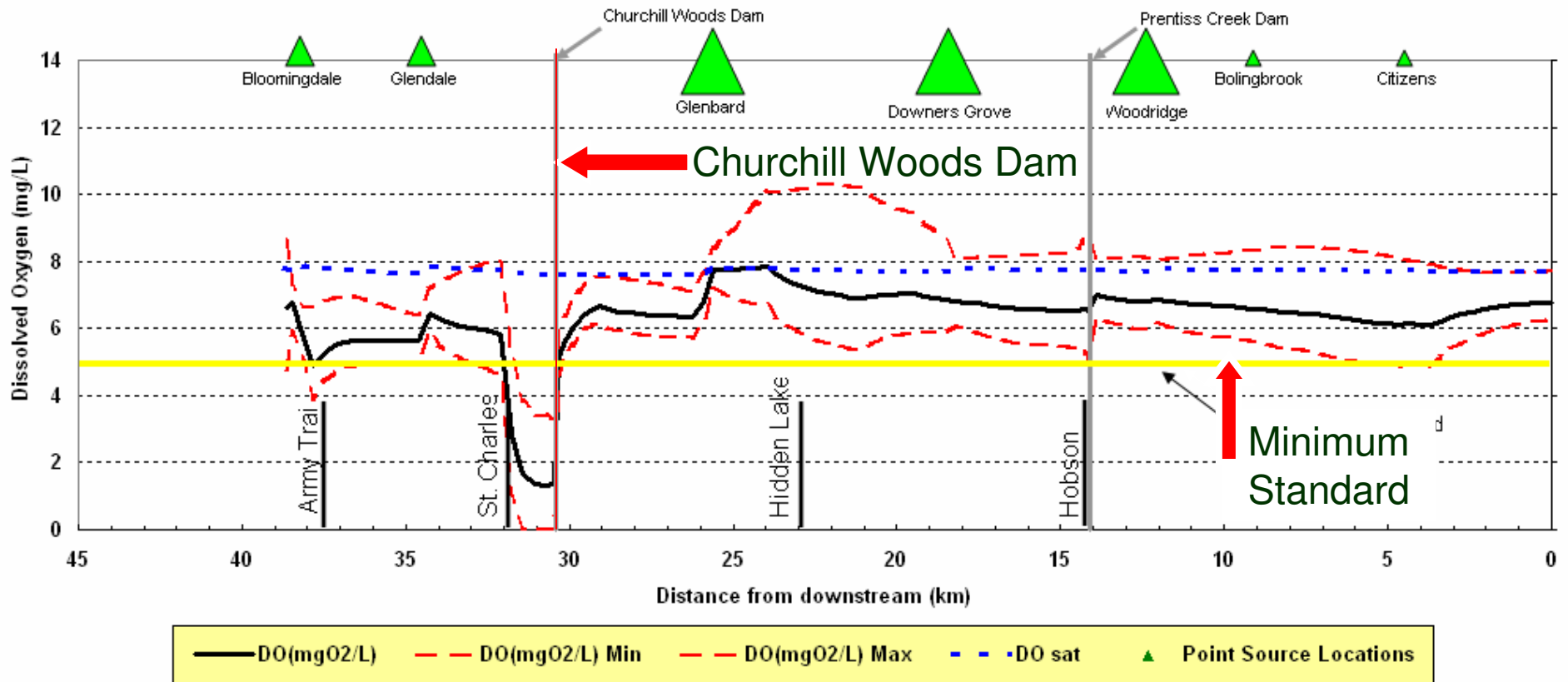
Salt Creek Sanitary District  
Village of Schaumburg  
Village of Villa Park  
City of Wheaton  
City of West Chicago  
Wheaton Sanitary District  
Village of Westmont  
City of Wooddale  
Village of Woodridge  
Baxter Woodman, Inc.  
Clark Dietz, Inc.  
CDM, Inc.  
The Conservation Foundation  
ENSR, Inc.  
Forest Preserve District of DuPage County  
Hey and Associates, Inc.  
Huff & Huff, Inc.  
Illinois Department of Transportation  
Kabbes Engineering, Inc.  
Prairie Rivers Network  
RJN Group, Inc.  
Salt Creek Watershed Network  
Sierra Club, River Prairie Group  
Strand & Associates, Inc.  
Wight Engineering, Inc.  
York Township Highway Department

# Continuous DO Values East Branch DuPage River June-August 2007



# East Branch DuPage – Baseline DO

**Dissolved Oxygen in East Branch DuPage River**  
Baseline Conditions

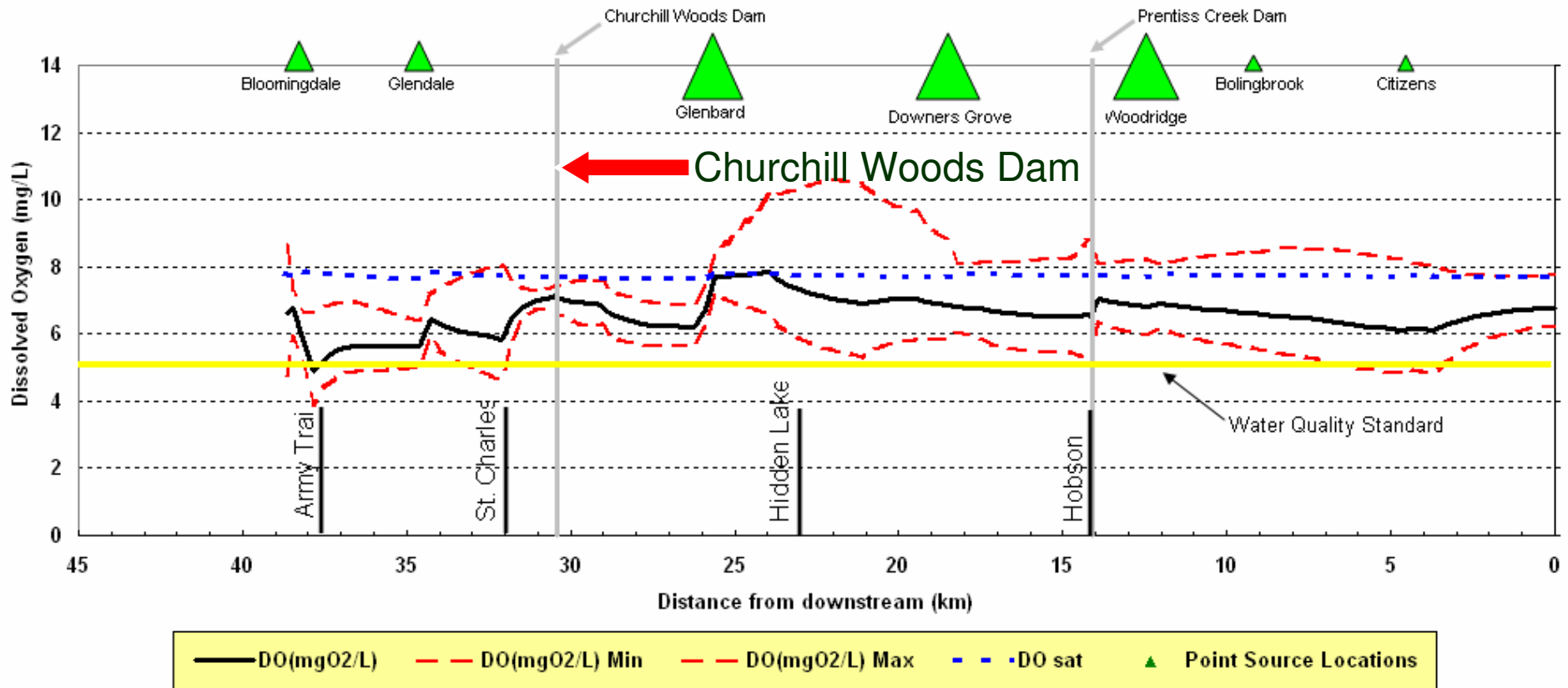




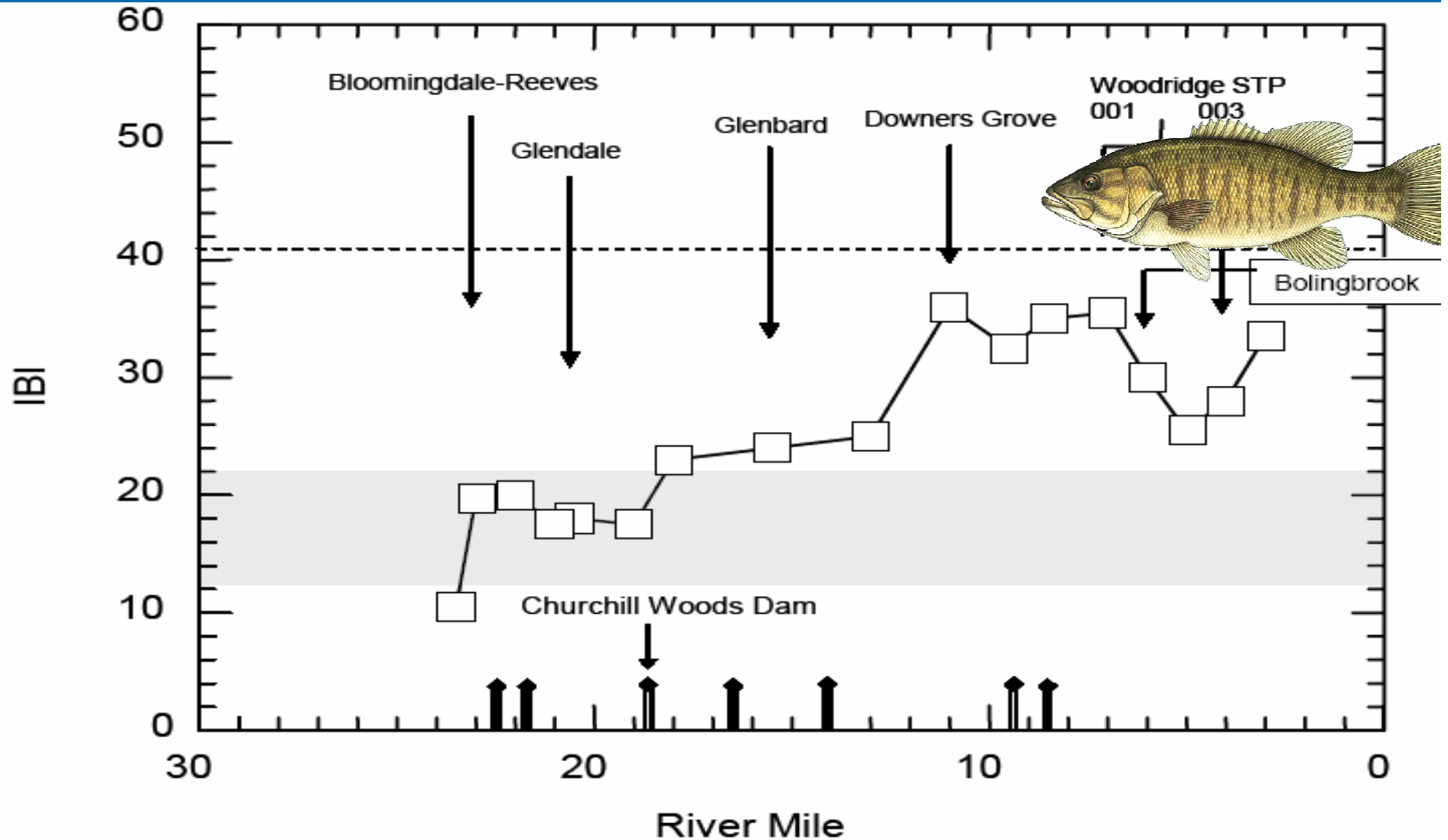
# East Branch DuPage – Future Churchill Woods Dam Removal

## Dissolved Oxygen in East Branch DuPage River

Churchill Woods Dam Removed



# Fish Bio-diversity East Branch







# Churchill Woods Dam

Existing Conditions



# Churchill Woods Dam

## Restored Stream with Wetlands



# Constraints

Sediment (average water depth 1.5 feet)

Protection of the rookery



# Schedule

- Wetlands survey and environmental assessment underway
- Developing scope for engineering plan
- Plan to and permitting completed for early 2010
- Construction late summer 2010