

VILLAGE OF LOMBARD POLICE DEPARTMENT



Raymond Byrne
Chief of Police

Thomas Wirsing
Deputy Chief of Operations

Roy Newton
Deputy Chief of Administrative Services



TO: Deputy Chief Wirsing

FROM: Sgt. Joe Grage #754

DATE: 06/092017

SUBJECT: Public Safety and Transportation Committee Agenda Item:
Balkan Bakery Request for 15 Minute Parking Space

On May 10th, the Village received an email through the Lombard Chamber of Commerce that the Dragica Mitic, the owner of the Balkan Bakery, 14 W. St. Charles Rd., was request a parking modification in front of her business. The modification being requested was for the parking space in front of her store on St. Charles Rd. to be posted "15 Minute Parking". The email explained that Ms. Mitic does not have a rear entrance like other businesses to the west of her do. As a result, she asserted that she is losing business because the parking in front of her store is always being used and it prevents an opportunity for customers to make a quick stop to pick up something from her store.

I met with Ms. Mitic today at her store. I confirmed her request was for the parking space in front her store to be limited to 15 minute parking. She told me that she was requesting at least one space to be posted as such. Ms. Mitic explained to me that she does not have a customer entrance at the rear of her business like other businesses do. She further explained that business patrons of other stores and residents that live above the businesses on St. Charles Rd. often park directly in front of her store. She told me that she felt that this prevents customers for making a quick stop at her store to make a

villageoflombard.org/lpd
630 / 873-4400 TDD: 630 / 620-5811
DEPT. FAX: 630 873.4496 INVESTIGATIONS FAX: 630 873.4444
235 E. Wilson Avenue Lombard, Illinois 60148

VILLAGE OF LOMBARD POLICE DEPARTMENT



Raymond Byrne
Chief of Police

Thomas Wirsing
Deputy Chief of Operations

Roy Newton
Deputy Chief of Administrative Services

purchase. She believes her business is suffering as a result. Ms. Mitic pointed out that she knows that there is a sign in front of her business that limits parking to two hours and for customers only from 8 AM to 6 PM (except Sundays and holidays) but it is not enforced. Additionally, she pointed out that a business to the west (20 West Wine and Spirits) has a sign posted in front of their business limiting parking to 15 minutes from 4-10PM on Saturdays. She also pointed out that the dry cleaner on Park (Park Ave. Cleaners) has a sign in front that limits parking to 5 minutes between 7AM and 7PM.

Ms. Mitic indicated to me that the parkway trees in front of her business have also concealed the visibility of her business to a degree, but added that the Village had recently trimmed them and she was happy about it.

While not unprecedented, Ms. Mitic's request is problematic in the sense that it represents an expansion of special parking restrictions being requested in the downtown area by business specifically to benefit their own interests. If such requests continue to be approved, it is not unthinkable to imagine that the majority of the businesses in the downtown area will eventually make such a request. The current parking restrictions in place (2 hours, customers only) are already difficult to enforce because they require close monitoring in order to be enforced. Adding a variety of different special restrictions will only make enforcing them more demanding in terms of the use of Police Department resources.

I advised Ms. Mitic of the process regarding her request and told her that I would bring it before the next Public Safety and Transportation Committee meeting. I encouraged her

villageoflombard.org/lpd
630 / 873-4400 TDD: 630 / 620-5811
DEPT. FAX: 630 873.4496 INVESTIGATIONS FAX: 630 873.4444
235 E. Wilson Avenue Lombard, Illinois 60148

VILLAGE OF LOMBARD POLICE DEPARTMENT



Raymond Byrne
Chief of Police

Thomas Wirsing
Deputy Chief of Operations

Roy Newton
Deputy Chief of Administrative Services

to attend the meeting. I advised her when the PSTC meets and provided her with my contact information.

While I empathize with Ms. Mitic, I cannot recommend this modification as a matter of policy due to the fact that it represents an expansion of already difficult to enforce special parking restrictions in the downtown area designed to specifically benefit the businesses.

Respectfully,

Sgt. Joe Grage #754

villageoflombard.org/lpd

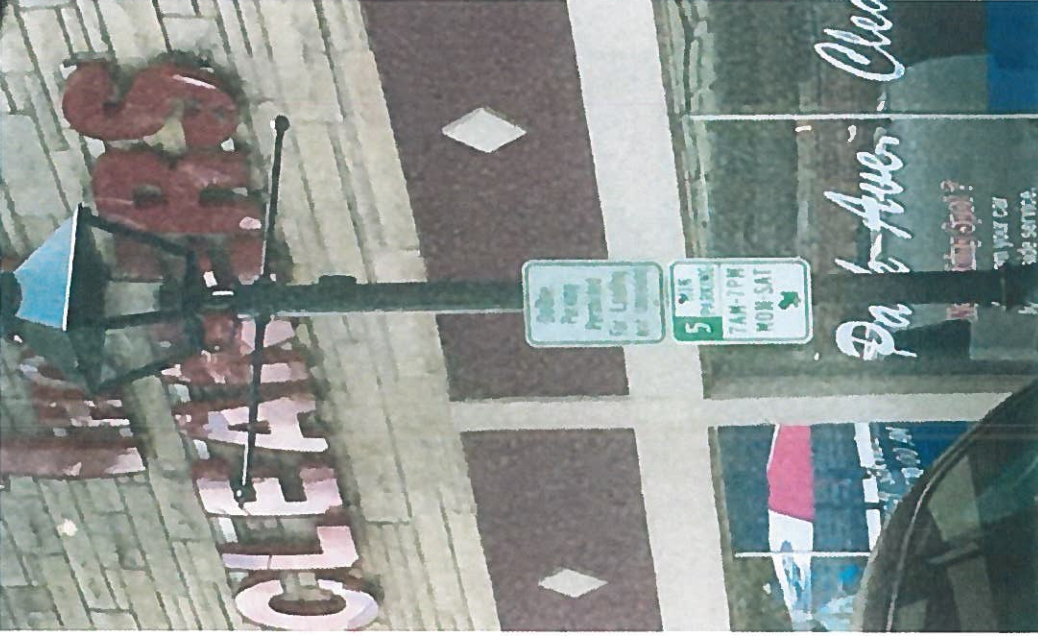
630 / 873-4400 TDD: 630 / 620-5811

DEPT. FAX: 630 873.4496 INVESTIGATIONS FAX: 630 873.4444

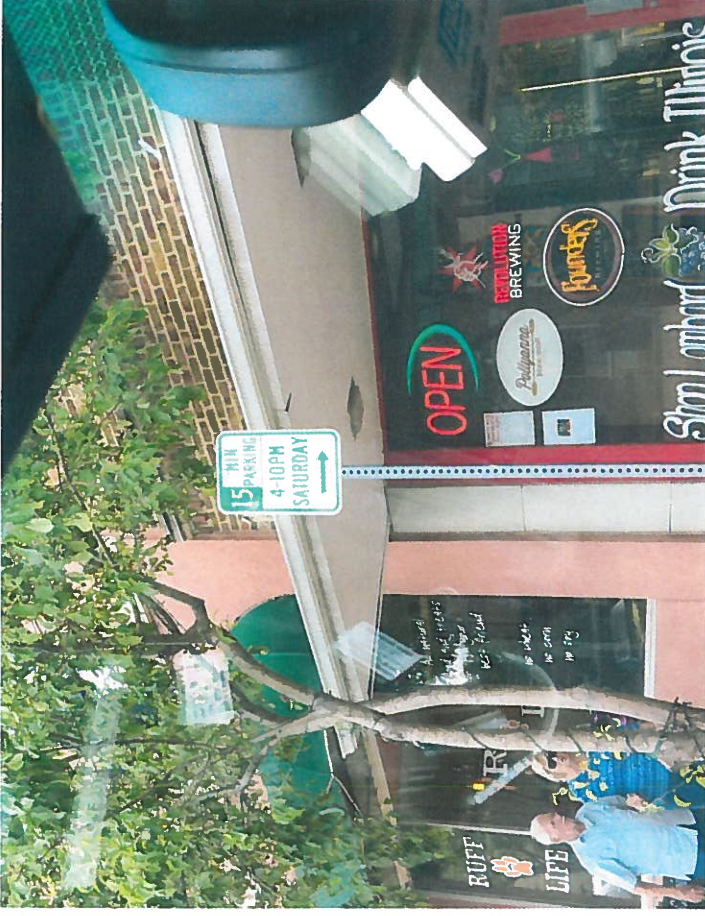
235 E. Wilson Avenue Lombard, Illinois 60148



GOOGLE MAPS VIEW OF BALKAN BAKERY (RED AWNING) APPROACHING FROM THE EAST



SIGN IN FRONT OF PARK AVENUE CLEANERS



SIGN IN FRONT OF 20 WEST WINE