



Downtown Landscape Enhancement Recommendations

September 17, 2009

Agenda

Approach

Recommendations

Implementation

Approach

Evaluate existing conditions

Identify opportunities

Apply criteria

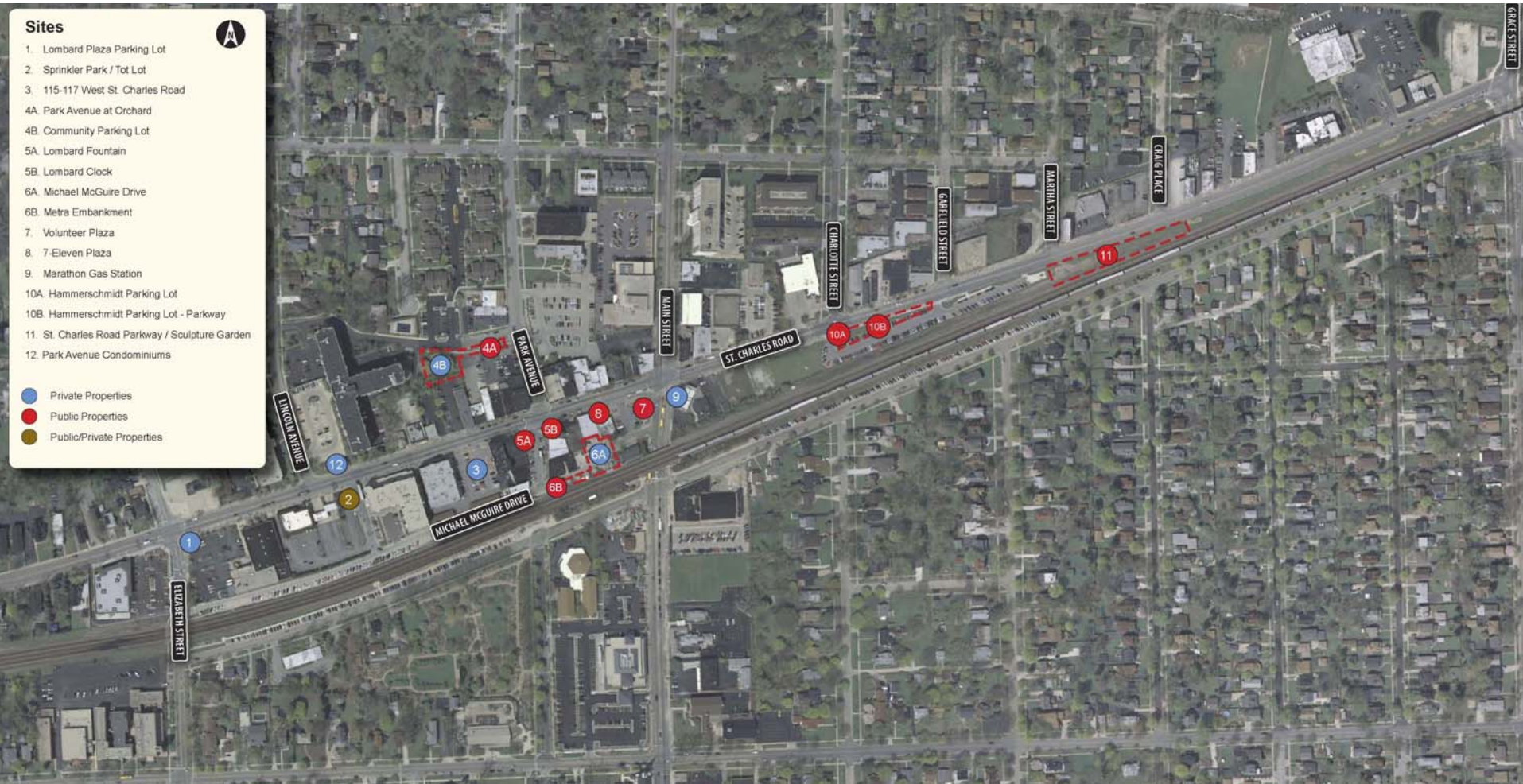
Recommend improvements and identify costs

Sites



1. Lombard Plaza Parking Lot
2. Sprinkler Park / Tot Lot
3. 115-117 West St. Charles Road
- 4A. Park Avenue at Orchard
- 4B. Community Parking Lot
- 5A. Lombard Fountain
- 5B. Lombard Clock
- 6A. Michael McGuire Drive
- 6B. Metra Embankment
7. Volunteer Plaza
8. 7-Eleven Plaza
9. Marathon Gas Station
- 10A. Hammerschmidt Parking Lot
- 10B. Hammerschmidt Parking Lot - Parkway
11. St. Charles Road Parkway / Sculpture Garden
12. Park Avenue Condominiums

- Private Properties
- Public Properties
- Public/Private Properties



Criteria

**Establish and consistently
apply design standards**



Movable Planters (Large and Small)



Bench (without back and with back)



Tree Grate



Bicycle Rack



Decorative Railing



Limestone Wall with Precast Cap



Skateboard Deterrent Metal Band



Trash Receptacle



Bollard



Street Light

Fill in gaps



s Park Ave

**FOR
LEASE**

ELLIOTT PROPERTIES
630.620.7875

"Where Hot Cars Are Cool"
CRUISE NIGHTS
SATURDAYS, 6-10 p.m.
Downtown Lombard



LOMBARD
Cruise Nights



PLEASE
BUTTON
UP
WALK
SIGNAL



s Park Ave

**FOR
LEASE**

ELLIOTT PROPERTIES
630.620.7875

"Where Hot Cars Are Cool"
CRUISE NIGHTS
SATURDAYS, 6-10 p.m.
Downtown Lombard



LOMBARD
Cruise Nights



Revitalize appearance

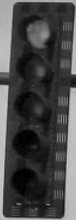


LO IBAARD



Screen unsightly views

Main St



unleaded
2.99



NO
TURN
ON
RED

2
APRIL 15
246⁹

Marlboro
4.90



REGULAR
2.59

MARATHON 6





Main St



unleaded
2.59

NO
TURN
ON
RED

2
After 10
246⁹

Marlboro
4.90

MARATHON 6

Destination
Summer

Use durable materials and consistent maintenance for long term return on investment



Elizabeth St

LOMBARD PLAZA
KINDER CARE
DENTAL OFFICE
Lizza Restaurant
VIDEO BY R&R

For Lease
8,000 sq ft
Retail / Office
690-0037

Lombard Farmers Market
Tuesdays 8am-1pm
Park & St. Charles Rd
downtownlombard.org



Recommendations

Sites



1. Lombard Plaza Parking Lot
2. Sprinkler Park / Tot Lot
3. 115-117 West St. Charles Road
- 4A. Park Avenue at Orchard
- 4B. Community Parking Lot
- 5A. Lombard Fountain
- 5B. Lombard Clock
- 6A. Michael McGuire Drive
- 6B. Metra Embankment
7. Volunteer Plaza
8. 7-Eleven Plaza
9. Marathon Gas Station
- 10A. Hammerschmidt Parking Lot
- 10B. Hammerschmidt Parking Lot - Parkway
11. St. Charles Road Parkway / Sculpture Garden
12. Park Avenue Condominiums

- Private Properties
- Public Properties
- Public/Private Properties



Durable Materials and Consistent Maintenance

The following is a list of recommended plant species and varieties:

Shade Trees

Botanical Name	Common Name
Acer x freemanii 'Morton'	Marmo Maple
Celtis occidentalis	Common Hackberry
Gleditsia triacanthos var. inermis 'Skycole'	'Skycole' Thornless Honeylocust
Gymnocladus dioica *	Kentucky Coffeetree
Quercus rubra *	Red Oak
Quercus x schuetti *	Swamp Burr Oak
Robinia pseudoacacia 'Benjamin' *	Chicago Blues Black Locust
Tilia americana	American Linden
Tilia cordata 'Greenspire'	Greenspire Littleleaf Linden
Ulmus x frontier	Frontier Elm
Ulmus japonica x wilsoniana 'Morton'	Acolade Elm

Ornamental Trees

Botanical Name	Common Name
Amelanchier canadensis 'Autumn Brilliance' *	Autumn Brilliance Shadblow Serviceberry
Cercis canadensis *	Eastern Redbud
Crataegus crusgalli var. inermis *	Thornless Cockspur Hawthorn
Malus 'Adams'	Adams Flowering Crabapple
Malus 'Donald Wyman'	Donald Wyman Flowering Crabapple
Malus 'Prairifire'	Prairifire Crabapple
Malus x zumi	Zumi Flowering Crabapple
Syringa reticulata 'Ivory Silk'	Japanese Tree Lilac
Viburnum prunifolium *	Blackhaw Viburnum

Evergreen Shrubs

Botanical Name	Common Name
Juniperus chinensis 'Kallay's Compact'	Kallay's Compact Juniper
Juniperus chinensis 'Klehm Compact'	Klehm Compact Juniper
Juniperus procumbens 'Nana'	Dwarf Japanese Garden Juniper
Taxus x media 'Runyan'	Runyan Yew
Taxus x media 'Taunton'	Taunton Yew
Thuja occidentalis 'Emerald' *	Emerald Eastern Arborvitae
Thuja occidentalis 'Holmstrup' *	Holmstrup Eastern Arborvitae

* indicates native plant

Deciduous Shrubs - Shade

Botanical Name	Common Name
Aronia arbutifolia 'Brilliantissima'	Brilliant Red Chokeberry
Aronia melanocarpa *	Autumn Magic Black Chokeberry
Cotoneaster apiculatus	Cranberry Cotoneaster
Cornus racemosa *	Gray Dogwood
Cornus sericea 'Bergeson Compact' *	Bergeson Compact Redtwig Dogwood
Cornus sericea 'Cardinal' *	Cardinal Redosier Dogwood
Euonymus alatus 'Rudy Haag'	Rudy Haag Dwarf Burning Bush
Hydrangea arborescens 'Annabelle' *	Smooth Hydrangea
Hydrangea quercifolia 'Pee Wee'	Pee Wee Oak-leaf Hydrangea
Rhus aromatica 'Gro-Low' *	Gro-Low Fragrant Sumac
Ribes alpinum 'Green Mound'	Green Mound Alpine Currant
Viburnum carlesii 'Aurora'	Aurora Korean Spice Viburnum
Viburnum carlesii x macrocephalum 'Cayuga'	Cayuga Korean Spice Viburnum
Viburnum lantana 'Mohican'	Mohican Viburnum

Deciduous Shrubs - Sun

Botanical Name	Common Name
Euonymus alatus 'Rudy Haag'	Rudy Haag Dwarf Burning Bush
Forsythia x intermedia 'Sunrise'	Sunrise Forsythia
Fothergilla gardenia 'KLMtvo' *	Dwarf Fothergilla
Hamamelis vernalis 'Autumn Embers'	Autumn Embers Witchhazel
Ilex verticillata *	Common Winterberry
Rhus aromatica 'Gro-Low' *	Gro-Low Fragrant Sumac
Ribes alpinum 'Green Mound'	Green Mound Alpine Currant
Rosa 'Carefree Wonder'	Carefree Wonder Rose
Rosa 'Nearly Wild'	Nearly Wild Rose
Rosa var. 'Noala'	Flower Carpet Coral Rose
Rosa pavement 'Purple'	Purple Pavement Rose
Spiraea japonica 'Little Princess'	Little Princess Japanese Spirea
Spiraea betulifolia 'Tor'	Tor Birchleaf Spirea
Syringa meyeri 'Palibin'	Palibin Dwarf Lilac
Syringa patula 'Miss Kim'	Miss Kim Dwarf Lilac
Viburnum dentatum 'Autumn Jazz' *	Autumn Jazz Viburnum
Viburnum prunifolium *	Blackhaw Viburnum

Seasonal

Summer:	Fall:	Winter:	Spring:
Begonia	Cabbage	Evergreen boughs	Daffodils
Dusty Miller	Kale	Red Twig Dogwood	Pansy
Geranium	Mums		Tulip
Impatient	Pansy		
Lantana			
Petunia			

Final selection of seasonal plants subject to budget, quantity and design

Perennials, Groundcover and Vines - Shade

Botanical Name	Common Name
Ajuga reptans 'Bronze Beauty'	Bronze Beauty Bugleweed
Astilbe chinensis 'Pumila'	Dwarf Chinese Astilbe
Astilbe chinensis 'Visions'	Visions Astilbe
Euonymus fortunei coloratus	Purpleleaf Wintercreeper
Hedera helix 'Thorndale'	Thorndale English Ivy
Heuchera 'Green Spice'	Green Spice Coral Bells
Heuchera 'Marmalade'	Marmalade Coral Bells
Heuchera x 'Palace Purple'	Palace Purple Coral Bells
Hosta varieties	Plantain Lily
Nepeta x faassenii 'Walker's Low'	Walker's Low Nepeta
Pachysandra terminalis 'Green Carpet'	Green Carpet Japanese Pachysandra
Parthenocissus quinquefolia	Virginia Creeper
Parthenocissus tricuspidata	Boston Ivy
Vinca minor	Periwinkle
Waldstenia ternata	Barren Strawberry

Perennials, Groundcover and Vines - Sun

Botanical Name	Common Name
Achillea millefolium 'Oertel's Rose'	Oertel's Rose Yarrow
Achillea x 'Moonshine'	Moonshine Yarrow
Calamagrostis acutiflora 'Karl Foerster'	Karl Foerster Feather Reed Grass
Calamagrostis acutiflora 'Overdam'	Overdam Feather Reed Grass
Clematis terniflora	Sweet Autumn Clematis
Coreopsis verticillata 'Moonbeam' *	Moonbeam Thread-Leaved Coreopsis
Echinacea purpurea *	Purple Coneflower
Echinacea purpurea 'Kim's Knee High'	Kim's Knee High Purple Coneflower
Euonymus fortunei coloratus	Purpleleaf Wintercreeper
Geranium 'Rozanne'	Rozanne Geranium
Hedera helix 'Thorndale'	Thorndale English Ivy
Helictotrichon sempervirens	Blue Oat Grass
Hemerocallis varieties	Daylily
Heuchera 'Green Spice'	Green Spice Coral Bells
Heuchera 'Marmalade'	Marmalade Coral Bells
Heuchera x 'Palace Purple'	Palace Purple Coral Bells
Liatris spicata 'Kobald' *	Kobald Gayfeather
Molinia caerulea 'Moorflamme'	Moorflamme Purple Moor Grass
Nepeta x faassenii 'Walker's Low'	Walker's Low Nepeta
Pachysandra terminalis 'Green Carpet'	Green Carpet Japanese Pachysandra
Parthenocissus quinquefolia	Virginia Creeper
Parthenocissus tricuspidata	Boston Ivy
Pennisetum alopecuroides 'Hamelin'	Hamelin Dwarf Fountain Grass
Perovskia atriplicifolia 'Little Spire'	Little Spire Russian Sage
Polygonum Aubertii 'Lemon Lace'	Lemon Lace Silver Fleece Vine
Rudbeckia fulgida 'Goldsturm' *	Goldsturm Black-eyed Susan
Salvia nemerosa 'Ostfriesland'	Ostfriesland Salvia
Sedum 'Autumn Joy'	Autumn Joy Sedum
Sporobolus heterolepis *	Prairie Dropseed
Veronica spicata 'Royal Candles'	Royal Candles Veronica
Vinca minor	Periwinkle

The following is a general outline of routine landscape maintenance activities. All activities shall be scheduled accordingly with the weather.

January

- Remove litter from turf and landscape areas
- Remove litter caught in trees and shrubs
- Check and maintain all winter coverings, including evergreen boughs and holiday lighting
- Prune damaged tree branches as needed

February

- Remove litter from turf and landscape areas
- Remove litter caught in trees and shrubs
- Remove all winter coverings, including evergreen boughs, and holiday lighting
- Check perennial plantings and reset those plants that have been heaved from the ground due to frost
- Inspect all trees, shrubs (including roses), and vines to determine pruning needs and complete this work prior to bud break

March

- Remove litter from turf and landscape areas
- Remove litter caught in trees and shrubs
- Check perennial plantings and reset those plants that have been heaved from the ground due to frost
- Inspect all trees, shrubs (including roses), and vines to determine pruning needs and complete this work prior to bud break

April

- Remove litter from turf and landscape areas
- Remove litter caught in trees and shrubs
- Perform spring bed clean-up in all landscape locations prior to any required division of perennials
- Trim back all perennials not previously cut back
- Water semi-irrigated and non-irrigated landscape areas as required
- Mulch planting areas
- Begin monitoring for pest and disease problems
- Begin mowing lawn areas as needed
- Monitor all planting beds for weedy conditions and take appropriate measures to maintain all plantings in a weed-free condition

May

- Remove litter from turf and landscape areas
- Remove litter caught in trees and shrubs
- Complete required perennial division
- Braid or remove 25% of green foliage from spring blooming bulbs
- Trim back all perennials as required
- Water landscaped areas as needed
- Mulch planting areas as needed
- Continue monitoring for pest and disease problems
- Monitor all planting beds for weedy conditions and take appropriate measures to maintain all plantings in a weed-free condition

June

- Remove litter from turf and landscape areas
- Remove litter caught in trees and shrubs
- Monitor newly installed plantings for watering requirements
- Monitor all planting beds for weedy conditions and take appropriate measures to maintain all plantings in a weed free condition
- Monitor all landscaped areas for pest and disease problems
- Mulch planting areas as needed
- Prune all shrubs and hedges (following bloom period if appropriate)

July

- Remove litter from turf and landscape areas
- Remove litter caught in trees and shrubs
- Continue to monitor plantings installed this season for watering needs
- Monitor all planting beds for weedy conditions and take appropriate measures to maintain all plantings in a weed-free condition
- Monitor all landscape areas for pest and disease problems
- Monitor mulch depth and adjust as needed

August

- Remove litter from turf and landscape areas
- Remove litter caught in trees and shrubs
- Begin any required deadheading, dead leafing, pruning, and pinching of perennials and annuals
- Monitor all planting beds for weedy conditions and take appropriate measures to maintain all areas in a weed free condition
- Monitor mulch depths and adjust as needed
- Order spring blooming bulbs for fall installation
- Monitor all landscaped areas for pest and disease problems

September

- Remove litter from turf and landscape areas
- Remove litter caught in trees and shrubs
- Continue any required deadheading, dead leafing, pruning, and pinching of perennials and annuals
- Monitor all planting beds for weedy conditions and take appropriate measures to maintain all areas in a weed free condition
- Continue to monitor mulch depths as needed
- Survey all planting areas specified and note any dead, damaged or missing plants and begin installing new plant material
- Prune shrubs and hedges for the last time

October

- Remove litter from turf and landscape areas
- Remove litter caught in trees and shrubs
- Begin fall clean-up of planting beds
- Do not cut back perennials until they go dormant
- Remove annuals
- Monitor all planting beds for weedy conditions and take appropriate measures to maintain all areas in a weed free condition
- Complete installation of new plant materials by the middle of this month
- Begin installing spring blooming bulbs
- Install and maintain holiday decorations as desired

November

- Remove litter from turf and landscape areas
- Remove litter caught in trees and shrubs
- Complete installation of spring blooming bulbs
- Begin performing any necessary tree pruning maintenance once the trees are dormant
- Complete fall bed clean up
- Perennial foliage shall not be cut back until the plants go dormant
- Install winter evergreen covers
- Maintain all winter coverings, including evergreen boughs
- Maintain all lighting in operating order, including all seasonal lighting

January

- Remove litter from turf and landscape areas
- Remove litter caught in trees and shrubs
- Maintain all winter coverings, including evergreen boughs
- Maintain all lighting in operating order, including all seasonal lighting

Implementation

Policy

Maintenance

Budget

Bill, feel free to send either new text or text for additional slides

Questions?

Thank You