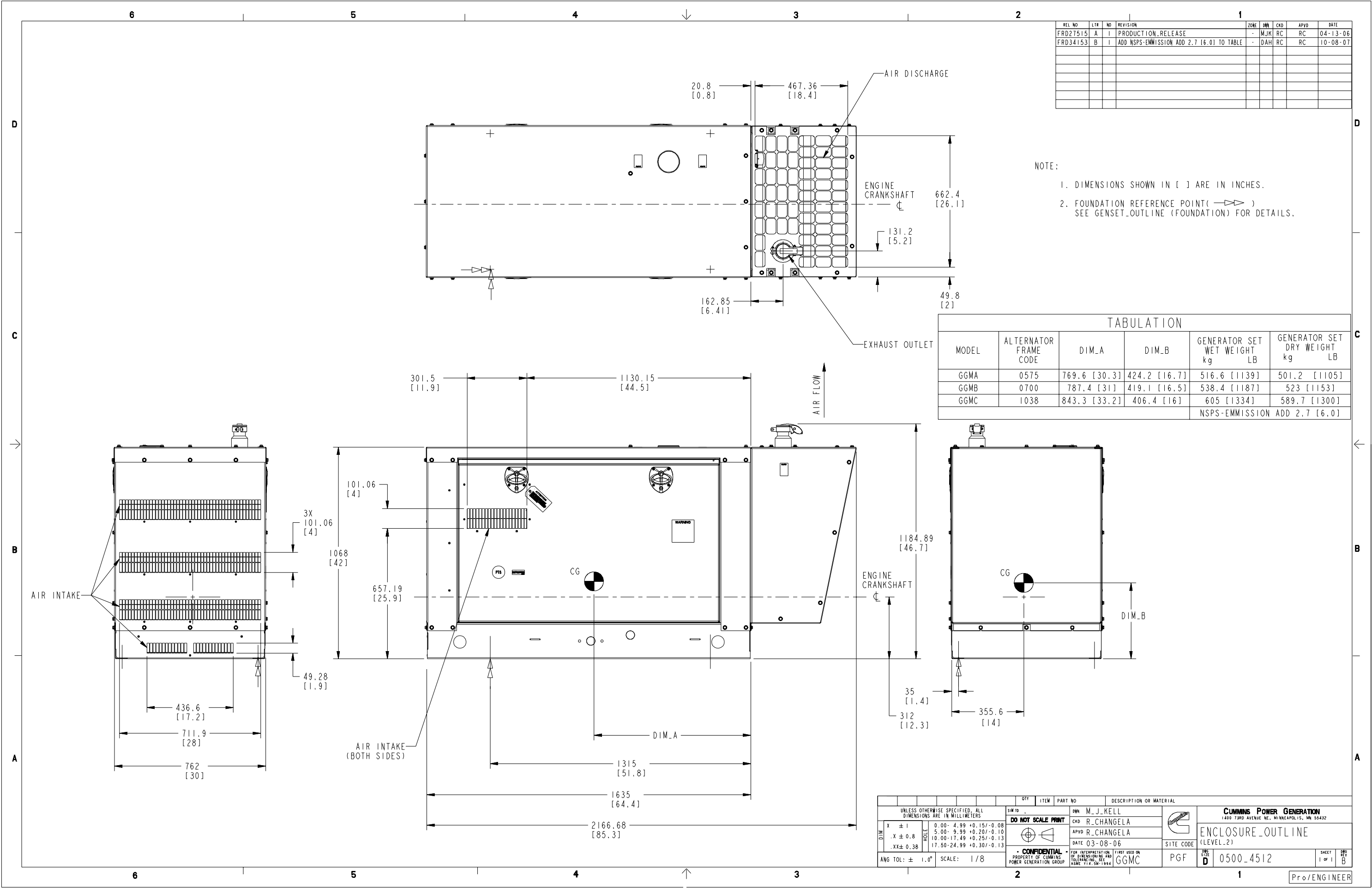


REL NO	LTR	NO	REVISION	ZONE	DWN	CKD	APVD	DATE
FRD27515	A	1	PRODUCTION RELEASE	-	MJK	RC	RC	04-13-06
FRD34153	B	1	ADD NSPS-EMISSION ADD 2.7 16.01 TO TABLE	-	DAH	RC	RC	10-08-07

NOTE:
 1. DIMENSIONS SHOWN IN [] ARE IN INCHES.
 2. FOUNDATION REFERENCE POINT (↔) SEE GENSET_OUTLINE (FOUNDATION) FOR DETAILS.

TABULATION					
MODEL	ALTERNATOR FRAME CODE	DIM_A	DIM_B	GENERATOR SET WET WEIGHT kg	GENERATOR SET DRY WEIGHT LB
GGMA	0575	769.6 [30.3]	424.2 [16.7]	516.6 [1139]	501.2 [1105]
GGMB	0700	787.4 [31]	419.1 [16.5]	538.4 [1187]	523 [1153]
GGMC	1038	843.3 [33.2]	406.4 [16]	605 [1334]	589.7 [1300]
				NSPS-EMISSION ADD 2.7 [6.0]	



UNLESS OTHERWISE SPECIFIED, ALL DIMENSIONS ARE IN MILLIMETERS		DWT		ITEM	PART NO	DESCRIPTION OR MATERIAL	
SIM TO		DWN		M_J_KELL		Cummins POWER GENERATION 1400 73RD AVENUE NE, MINNEAPOLIS, MN 55432	
DO NOT SCALE PRINT		CKD		R_CHANGELA		ENCLOSURE_OUTLINE (LEVEL 2)	
APVD		R_CHANGELA		DATE		SITE CODE	
DATE		03-08-06		PGF		D 0500_4512	
ANG TOL: ± 1.0°		SCALE: 1/8		GGMC		SHEET 1 OF 1	
FOR INTERPRETATION OF DIMENSIONS AND TOLERANCES, SEE ASME Y14.5M-1994		FIRST USED ON		PGF		SHEET 1 OF 1	

Pro/ENGINEER