

VILLAGE OF LOMBARD POLICE DEPARTMENT



Roy Newton
Chief of Police

Thomas Wirsing
Deputy Chief of Operations

Joseph Grage
Deputy Chief of Administration

Date: October 27th, 2020
To: Public Safety and Transportation Committee (PSTC)
From: Deputy Chief Joseph Grage #754
Re: 14 W. St. Charles Rd. Request for 15 Minute Parking Space

On October 20th, Village staff was contacted by Dana Moreau, the owner of Babcock's Grove House at 101 W. St. Charles Rd. in reference to a parking space accommodation she is requesting near a new business she will be opening at the former Balkan Bakery located at 14 W. St. Charles Rd.

Ms. Moreau advised that the new business contemplates a dependence on pick-up and delivery orders and she is requesting a "15-Minutes Only" parking space in front of her new business to ensure the availability of parking for customers making brief stops to make pickups there.

As the PSTC may recall, the same request was made in 2017 by the owner of Balkan Bakery (Legistar Item#170323). The police department did not recommend approval of the request at that time for several reasons (see attached). It led to a larger discussion on parking spaces in the downtown area but was not ultimately not approved.

Unfortunately, much has changed during the pandemic and associated restrictions. Earlier this year during the height of pandemic restrictions the Village placed temporary parking signs of a similar nature near downtown businesses to help them serve their customers pick-up and delivery due to the fact that they were unable to dine indoors. As of this writing the same restrictions are once again in place.

VILLAGE OF LOMBARD POLICE DEPARTMENT



Roy Newton
Chief of Police

Thomas Wirsing
Deputy Chief of Operations

Joseph Grage
Deputy Chief of Administration

While the Village is investigating the posting the same temporary signage during the current restrictions, it is clear that the future remains uncertain for many downtown businesses. Businesses may continue to rely on pick-up and delivery more in the future.

Public Works Director Goldsmith met with Ms. Moreau in regards to this issue and other parking matters. He informed her that if a "15 Minutes Only" parking sign was posted near 14 W. St. Charles Rd. it would not be for use of her new customers only and would also be for other businesses. She indicated to him that she understood this.

Based on the above, the police department is recommending that the PSTC approve Ms. Moreau's request for a "15 Minutes Only" sign to be posted at or near the 14 W. St. Charles Rd address in order to allow the businesses in that immediate area to better serve customers conducting pick-up and delivery business.

Respectfully,

Deputy Chief Joseph Grage

VILLAGE OF LOMBARD POLICE DEPARTMENT



Raymond Byrne
Chief of Police

Thomas Wirsing
Deputy Chief of Operations

Roy Newton
Deputy Chief of Administrative Services



TO: Deputy Chief Wirsing

FROM: Sgt. Joe Grage #754

DATE: 06/092017

SUBJECT: Public Safety and Transportation Committee Agenda Item:
Balkan Bakery Request for 15 Minute Parking Space

On May 10th, the Village received an email through the Lombard Chamber of Commerce that the Dragica Mitic, the owner of the Balkan Bakery, 14 W. St. Charles Rd., was request a parking modification in front of her business. The modification being requested was for the parking space in front of her store on St. Charles Rd. to be posted "15 Minute Parking". The email explained that Ms. Mitic does not have a rear entrance like other businesses to the west of her do. As a result, she asserted that she is losing business because the parking in front of her store is always being used and it prevents an opportunity for customers to make a quick stop to pick up something from her store.

I met with Ms. Mitic today at her store. I confirmed her request was for the parking space in front her store to be limited to 15 minute parking. She told me that she was requesting at least one space to be posted as such. Ms. Mitic explained to me that she does not have a customer entrance at the rear of her business like other businesses do. She further explained that business patrons of other stores and residents that live above the businesses on St. Charles Rd. often park directly in front of her store. She told me that she felt that this prevents customers for making a quick stop at her store to make a

villageoflombard.org/lpd

630 / 873-4400 TDD: 630 / 620-5811

DEPT. FAX: 630 873.4496 INVESTIGATIONS FAX: 630 873.4444

235 E. Wilson Avenue Lombard, Illinois 60148

VILLAGE OF LOMBARD POLICE DEPARTMENT



Raymond Byrne
Chief of Police

Thomas Wirsing
Deputy Chief of Operations

Roy Newton
Deputy Chief of Administrative Services

purchase. She believes her business is suffering as a result. Ms. Mitic pointed out that she knows that there is a sign in front of her business that limits parking to two hours and for customers only from 8 AM to 6 PM (except Sundays and holidays) but it is not enforced. Additionally, she pointed out that a business to the west (20 West Wine and Spirits) has a sign posted in front of their business limiting parking to 15 minutes from 4-10PM on Saturdays. She also pointed out that the dry cleaner on Park (Park Ave. Cleaners) has a sign in front that limits parking to 5 minutes between 7AM and 7PM.

Ms. Mitic indicated to me that the parkway trees in front of her business have also concealed the visibility of her business to a degree, but added that the Village had recently trimmed them and she was happy about it.

While not unprecedented, Ms. Mitic's request is problematic in the sense that it represents an expansion of special parking restrictions being requested in the downtown area by business specifically to benefit their own interests. If such requests continue to be approved, it is not unthinkable to imagine that the majority of the businesses in the downtown area will eventually make such a request. The current parking restrictions in place (2 hours, customers only) are already difficult to enforce because they require close monitoring in order to be enforced. Adding a variety of different special restrictions will only make enforcing them more demanding in terms of the use of Police Department resources.

I advised Ms. Mitic of the process regarding her request and told her that I would bring it before the next Public Safety and Transportation Committee meeting. I encouraged her

villageoflombard.org/lpd
630 / 873-4400 TDD: 630 / 620-5811
DEPT. FAX: 630 873.4496 INVESTIGATIONS FAX: 630 873.4444
235 E. Wilson Avenue Lombard, Illinois 60148

VILLAGE OF LOMBARD POLICE DEPARTMENT



Raymond Byrne
Chief of Police

Thomas Wirsing
Deputy Chief of Operations

Roy Newton
Deputy Chief of Administrative Services

to attend the meeting. I advised her when the PSTC meets and provided her with my contact information.

While I empathize with Ms. Mitic, I cannot recommend this modification as a matter of policy due to the fact that it represents an expansion of already difficult to enforce special parking restrictions in the downtown area designed to specifically benefit the businesses.

Respectfully,

Sgt. Joe Grage #754

villageoflombard.org/lpd

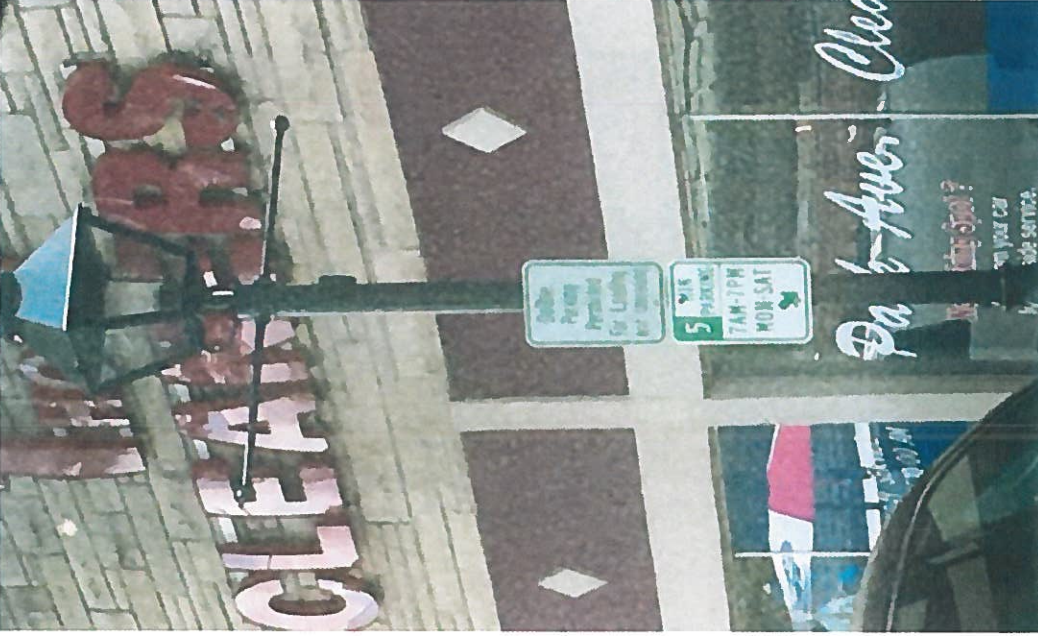
630 / 873-4400 TDD: 630 / 620-5811

DEPT. FAX: 630 873.4496 INVESTIGATIONS FAX: 630 873.4444

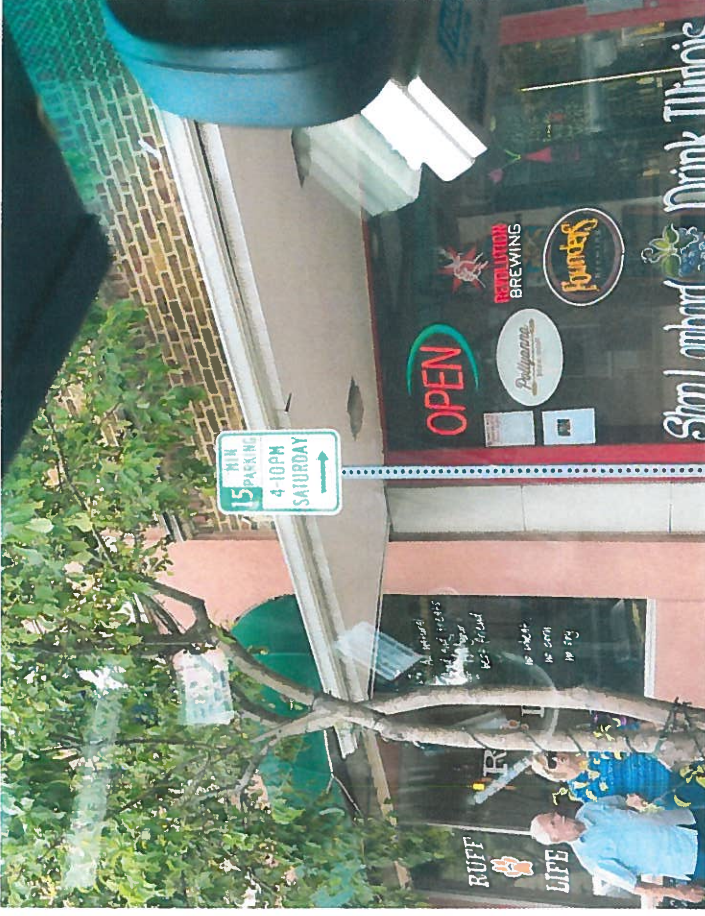
235 E. Wilson Avenue Lombard, Illinois 60148



GOOGLE MAPS VIEW OF BALKAN BAKERY (RED AWNING) APPROACHING FROM THE EAST



SIGN IN FRONT OF PARK AVENUE CLEANERS



SIGN IN FRONT OF 20 WEST WINE