

VILLAGE OF LOMBARD
REQUEST FOR BOARD OF TRUSTEES ACTION
For Inclusion on Board Agenda
Bids and Proposals

TO : President and Village Board of Trustees
FROM : Scott Niehaus, Village Manager
DATE : June 12, 2019 Agenda Date June 20, 2019
TITLE : **Waiver of Bids - Standard Equipment Company**
Envirosight RoverX Mainline Sewer Inspection System
SUBMITTED BY: Brian Jack, Utilities Superintendent

RESULTS:

Date Bid Was Published _____ Bidding Closed _____
Total Number of Bids Received _____
Total Number of Bids Meeting Specifications _____
Bid Security Required _____ Yes x No
Performance Bond Required _____ Yes x No
Were Any Bids Withdrawn _____ Yes x No
Explanation:
Waiver of Bids Requested? _____ X Yes _____ No
If yes, explain: See attached.
Award Recommended to Lowest _____ X Yes _____ No
Responsible Proposer? _____ X Yes _____ No
If no, explain:

FISCAL IMPACT:

Engineer's estimate/budget estimate \$75,000.00
Amount of Award \$74,445.00 (Acct# 520.791.715.75420-RM PROG 06 Underground Structure Maintenance)

BACKGROUND/RECOMMENDATION:

Award a contract in the amount of \$74,445.00 for the Envirosight RoverX Mainline Sewer Inspection System to Standard Equipment Company of Chicago, IL

Has Recommended Bidder Worked for Village Previously X Yes ___ No
If yes, was quality of work acceptable X Yes ___ No

REVIEW (as needed):

Village Attorney XX _____ Date _____
Finance Director XX _____ Date _____
Village Manager XX _____ Date _____

NOTE: All materials must be submitted to and approved by the Village Manager's Office by 4:30 pm, Wednesday, prior to the Board Agenda distribution.

MEMORANDUM



To: Scott Niehaus, Village Manager
From: Brian M. Jack, Utilities Superintendent *B. Jack*
Through: Carl S. Goldsmith, Director of Public Works *C. Goldsmith*
Date: May 13, 2019
Subject: Waiver of Bids - Standard Equipment Company
Sewer Crawler Camera

Background

The Utilities Division maintains the 140 miles of sanitary and 110 miles of storm sewers within the Village. Every year a portion of these sewers are inspected via various technologies including; CCTV, acoustic technologies, sonar, and laser or LIDAR. Locations for inspection are determined by upcoming Capital Improvement Projects, areas identified by in-house staff with potential failures, and estimated OCI for the system wide sewer condition assessment program.

Contracts for sewer inspection are awarded from RM PROG 05 - Sewer Televising and Cleaning, typically in spring for the year and consist of specific quantities and locations. Any additional locations that arise will generate a change order or will have to wait until the following contract year. These additional locations will typically include additional mobilization and occasionally increased unit costs depending on the size and type of sewer mains included in the original bid.

Budget Year	Contractor	Original Contract Amount	Final Order	Change	Final Contract Amount
2013	Chicagoland Trenchless	\$77,984.52	\$20,105.98		\$98,000.50
2015	Visu-Sewer of IL	\$94,133.50	\$6,868.78		\$101,002.28
2016	Pipe-View LLC	\$47,830.00	\$4,621.31		\$52,451.31
2016	DuPage County PW	N/A	\$3,575.00		\$56,026.31
Total Additional Costs			\$35,171.07		

These additional locations that arise are mainly identified from failures or sewer overflows caused by blockages or collapsed pipes. These locations are historically added to the contract as a change order, held off until the next contract year, or the Village has occasionally contracted with the DuPage County Public Works Department to utilize their crawler camera. Both options increase cost in which other projects may not be completed to cover the added cost. DuPage County Public Works also offers this service to every other community within DuPage County, so it is not a consistently reliable option as they only have one crew to manage the entire county. Lastly, delaying or pushing off locations to the following year will

potentially cause failures to worsen, increasing the scope and cost of repairs, and potential sanitary sewer overflows or basement backups.

The Utilities Division budgeted for and purchased a new sewer push camera in FY2017 to replace the antiquated camera that was at the end of its useful life. The new push camera included the latest technology for video resolution, recording, and sewer assessment documentation. The push camera is designed for inspecting sewer laterals and small diameter sewer mains in which the Division pushes the limits of this camera to inspect locations as stated above outside of the contract. As the push camera is not designed for larger diameter sewers or longer distances, the quality of inspection is limited.

Request for Information

Utilities Division Staff researched multiple manufacturers of crawler cameras over the past two years attending trade shows and having product demonstrations on site for the Supervisors and Maintenance Workers to evaluate.

The RoverX Mainline Inspection System Manufactured by Envirosight stood out as the superior system that will allow our in-house staff to perform emergency mainline inspections and to evolve into an in-house inspection program that will reduce contract costs in future years. This system is a mobile unit that is easily transferable from vehicle to vehicle and does not require a purchase of a dedicated vehicle for the function of this equipment. The Envirosight system comes with an entry level software license that will allow staff to perform NASSCO PACP standard pipeline defect identification and assessments and allows the firmware and software to evolve and be upgraded without purchasing additional equipment. The upgraded software would be budgeted for FY2020 and will allow all the data to be generated into reports, integrated into ESRI GIS and Cartegraph, as well as all the PACP functions included in the entry license.

The RoverX utilizes CAN-bus technology found in the automotive industry for onboard intelligence. The CAN-bus technology utilizes one cable to transmit data between the crawler and the PC or laptop. This technology allows automatic updates when connected to the internet, the guide cable to be lightweight, easy to pull long distances, all with high strength. No other manufacturer uses this technology. Other manufacturer data cables require multiple lines and is a much bulkier and heavier guide cable.

The RoverX crawler is a far superior piece of equipment than other manufactures as it is milled from a solid piece of aluminum with minimal penetrations to increase the life of the crawler. This construction makes the total weight of the crawler approximately 28 pounds comparable to competitors at 60 pounds reducing fatigue and potential injury to employees while lowering and raising the crawler out of manhole structures.

The Envirosight system is the same manufacturer of the push camera the Village purchased in FY2017, making the two cameras compatible with the software allowing the same type of PACP pipeline defect identification and assessments as the RoverX Mainline crawler camera.

In addition to the emergency sewer line inspections and potential future reduction in contract costs for sewer inspections, the Envirosight system will allow staff to perform sewer line repairs and sewer lateral tap abandonment internally utilizing the Quick-Lock point repairs eliminating excavations and restoration costs for these types of repairs.

The following firm submitted a proposal:

STANDARD EQUIPMENT COMPANY	COSTS
RoverX Mainline System	\$74,445.00
WinCan Expert Software Annual Subscription	\$3,795.00
WinCan Expert One-Time Software Purchase	\$11,650.00

Discussion

Standard Equipment Company of Chicago is the local distributor of Envirosight Products. The Village purchased the push camera in FY2017 from Standard Equipment along with multiple other pieces of equipment and parts including the Vactor Combination Vacuum, Vactor Sewer Flusher, and Elgin Street Sweepers. The Village has an excellent relationship with Standard Equipment.

Envirosight LLC was awarded a contract with Sourcewell (formerly NJPA) a Cooperative Purchasing Program in which the Village is a member of with a copy of the current agreement is enclosed. As Standard Equipment is a distributor of Envirosight LLC, and the Village of Lombard is a member of Sourcewell, staff solicited a proposal from Standard Equipment to specify the system and not officially solicit competitive proposals from other manufacturers as staff believes the Envirosight system fits the needs of the Village the best and is requesting to waive the bidding process.

Funding for the Envirosight System has not been budgeted for in the FY2019 budget. However, staff is providing funding through the recycling of the brass from the water meter replacement program in which \$55,000 has been recovered. The additional \$20,000 will be realized from programs in the Water/Sewer Capital Reserve Fund that have projects that have been completed under budget. Funding for upgrades to the software will be budgeted for in the FY2020 Water/Sewer Operations & Maintenance Fund account 510.270.380.75710.

Recommendations:

Please request the Board of Trustees to waive the formal bidding process and accept the lowest, responsible proposal for the Envirosight LLC RoverX Mainline System from Standard Equipment Company of Chicago, Illinois and authorize a purchase order in an amount not to exceed \$74,445.00 at their June 20, 2019 meeting.

2033 WEST WALNUT STREET • CHICAGO, IL 60612 • 312/829-1919 • FAX 312/829-6142
E-MAIL: sales@standardequipment.com • INTERNET: http://www.standardequipment.com



Village of Lombard
Attn: Brian Jack
Utilities Superintendent
1051 S. Hammerschmidt Avenue
Lombard, IL 60148

May 6, 2019

Standard Equipment Company is pleased to present the following quotation on an Envirosight RoverX mainline inspection system utilizing the Sourcewell (formally NJPA) contract # 022014EVS. Quotation and terms shown valid for 30 days. Please see included summary for unit options. Terms are as follows:

- RoverX mainline system

Price **\$74,445.00**

- Delivery 60 days after receipt of PO
- Payment Due in full at time of Delivery

Thank you for the opportunity to quote you on your sewer televising needs. Please contact me if you have any questions on this quote.

Best Regards,
Bob Donlon

Bob Donlon, Account Manager
bdonlon@standardequipment.com
Main: 312.829.1919 | Cell: 847.804.6017
2033 W Walnut St. Chicago, IL 60612



Presents a Proposal Summary

of the

**Demo Envirosight Rover X Mainline Inspection System
with Truck Build Out**



for

Village of Lombard
1051 Hammerschmidt Avenue
Lombard, IL 60148



ENVIROSIGHT EQUIPMENT DESCRIPTION

- VC500 pendant controller with desk-mount and US –Connector PC-VC
 - Integrated monitor (SVGA), text generator, operation hour counter, 10.1” touchscreen
 - 2 USB 2.0 ports
 - 1 HDMI video out
 - 1 BNC coax video out
 - 1 Ethernet port
 - 32 GB CF-memory card
 - MPEG-4 video format, .JPEG or PNG image format (selectable)
 - IP55 rated screen protection glass
 - Keyboard and mouse can be connected via USB
 - Detachable belt
 - Data display can be customized
 - Wifi interface
 - WinCan Web ready

- RCX90 Mainline Camera
 - CCD color camera with aluminum housing
 - 10x optical
 - 12x digital zoom
 - Automatic and manual iris
 - Automatic and manual focus
 - Can focus to less than a .5” from the camera lens
 - Rotation and tilt unit integrated in the camera head
 - Endless rotation range
 - Tilt range +/- 135°
 - Integrated laser to determine diameters and crack widths
 - Powerful homogenous illumination through LED lighting
 - Stepless light control from 0-100%
 - Automatic high and low light beam transition
 - Impact resistant light ring
 - Internal pressure indication via system status
 - IP68 protection glass up to 30 feet of water depth
 - Weighs 3 lbs.

- RX130 Mainline Crawler
 - Powerful six (6) overlapping wheel drive (steerable)
 - Independently controlled motors
 - Integrated color back-eye camera w/ LED lighting
 - Anti-kink rear connector
 - Electronically controllable clutch
 - Clutch disengages if power is lost
 - 512 Hz location transmitter (sonde)
 - Roll and pitch sensor
 - Inclinometer
 - Pressure monitoring
 - 6” to 48” with carrier and elevator (optional)
 - IP68 protection up to 30 feet of water depth
 - Body is made of a single anodized block of aluminum
 - Quick Change Design wheels, no additional tools required
 - Quick Change Design camera mounting system
 - Weighs 14 lbs.

- RAX300 Mainline Cable Reel
 - Fully automatic cable payout and winding aid
 - 1,000 feet of cable
 - 1,000 lb. tensile strength cable

- Footage counter
- Invert mode
- Wireless remote control
- IP44 protection class

- WinCan VX Entry License
 - Unlimited View Ware
 - NASSCO PACP Standard
 - Multiple Inspections
 - Section Basic Reporting
 - Data Viewer
 - Map Entry, Photo Assistant, Drawing function
 - Meta DB, Data Transfer Tool, SQL & Oracle database option
 - Multiple Inspection, Grading, Software Encoding
 - MPEG 1/2/4 Recording
 - Inclination
 - Local deformation & Crack width with laser,
 - 2 Month Free Trial WinCan Web Cloud Storage 25GB

- Standard Accessories Included:
 - Emergency stop cable for cable reel
 - Mounting frame for reel
 - Pressurization kit
 - 6 Quick Change Design hubs
 - 6 small Quick Change Design rubber wheels
 - 4 medium Quick Change Design rubber wheels
 - 4 large Quick Change Design rubber wheels
 - 2 Quick Change Design climber wheels

Total: \$74,445.00

Additional WinCan Software Options

- WinCan Web Cloud Storage 25GB - \$49.00 a month
- WinCan Web Cloud Storage 500GB - \$190.00 a month
- WinCan Web Cloud Storage 3TB - \$490.00 a month
- WinCan VX Expert Subscription - \$3,795.00 a year

Additional Maintenance Options

- Yearly Maintenance Inspection and Service, 1 year - Add \$1,095.00
- Yearly Maintenance Inspection and Service, 3 years - Add \$3,150.00
- Yearly Maintenance Inspection and Service, 5 years - Add \$5,000.00

2018 Pricing; Contact Dealer for Current Pricing



Always ahead



Packages at-a-glance

ENTRY

Purchase
\$2950 USD

Subscription
\$885 USD

Upgrade
\$1770 USD

Maintenance
\$443 USD



OFFICE

Purchase
\$4950 USD

Subscription
\$1485 USD

Upgrade
\$2970 USD

Maintenance
\$743 USD



ADVANCED

Purchase
\$7650 USD

Subscription
\$2295 USD

Upgrade
\$4590 USD

Maintenance
\$1148 USD



EXPERT

Purchase
\$11,650 USD

Subscription
\$3495 USD

Upgrade
\$6990 USD

Maintenance
\$1748 USD



WinCan VX ENTRY

ENTRY Package Plus:

- Unlimited View Ware
- NASSCO PACP Standard
- Photo Assistant
- Drawing Functionality
- Project Meta DB
- Data Transfer Tool
- SQL & Oracle DB Connectivity
- Multiple Inspections

WinCan VX OFFICE

Includes ENTRY Package Plus:

- WinCan Validator
- Deformation Measurement
- Crack Measurement
- NASSCO LACP, MACP, PACP Standard

WinCan VX ADVANCED

Includes OFFICE Package Plus:

- Text Generation Control
- MPEG 1/2/4 Capture
- HD Video Capture
- Inclination

WinCan VX EXPERT

Includes ADVANCED Package Plus:

- Report Generator
- WinCan 3D
- WinCan Analyst
- ESRI GIS Connection
- Asset Management Integration
- Work Order Management

**AMENDMENT
TO
CONTRACT #022014-EVS**

This Amendment is by and between Sourcewell and Envirosight LLC (Vendor). Sourcewell and Vendor will be collectively known hereinafter as "Parties."

Vendor was awarded a Sourcewell Contract for Sewer Vacuum, Hydro-Excavation, and/or Street Sweeper Equipment with Related Accessories and Supplies effective March 18, 2014, through March 18, 2018, relating to the provision of services by Vendor and to Sourcewell and its Members.

The parties agreed on March 12, 2018, to a "Letter of Agreement to Extend the Contract" for the 5th year renewal extension that will terminate on March 18, 2019. However, the parties wish to extend the Agreement for one additional year, which would expire on March 18, 2020.

The parties agree that certain terms within the Agreement shall be updated and amended and only to the extent as hereunder provided.

In consideration of the mutual covenants and agreements described in this Amendment, the parties agree as follows:

- 1. This Amendment is effective upon the date of the last signature below and has the effect of extending the Agreement through March 18, 2020.**
- 2. Effective June 6, 2018, NJPA changed its name to Sourcewell. All references in these documents to NJPA should be read as being replaced with "Sourcewell."**
- 3. The Agreement and any previous amendments are incorporated into this Amendment by reference.**

(This Section Intentionally Left Blank.)

Except as amended by this Amendment, the Agreement remains in full force and effect.

Sourcewell

By: 
Authorized Signature

Jeremy Schwartz
Name – Printed

Title: Director of Operations & Procurement/CPO

Date: 3-6-19

APPROVED:

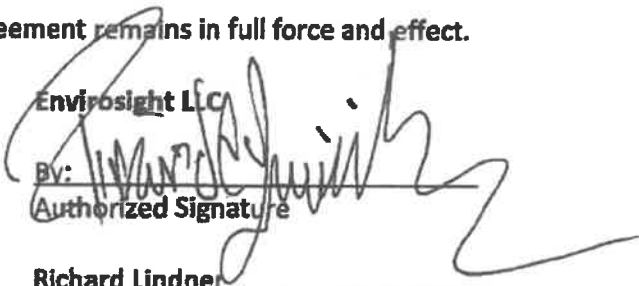
By: 
Authorized Signature

Chad Coauette
Name – Printed

Title: Executive Director/CEO

Date: 3/4/19

Envirosight LLC

By: 
Authorized Signature

Richard Lindner
Name – Printed

Title: President

Date: 3/6/19

LOCK & LOAD

for Sewer & Water Rehab

more than
1,000,000
installed



Target failing pipes with a stainless rehab sleeve that installs in minutes.

Positioned by a crawler and expanded pneumatically, Quick-Lock provides structural trenchless pipe repair with heavy-gauge 316L stainless steel, plus infiltration abatement with an EPDM rubber gasket. It installs in minutes with two people and minimal overhead.



POINT REPAIR

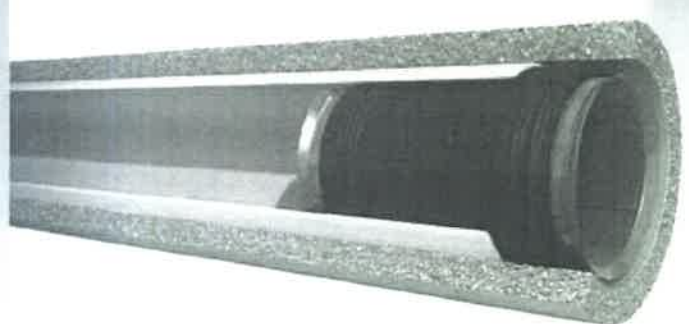
restore strength, stop infiltration



For standalone point repair, or for pre-lining under high infiltration, Quick-Lock sleeves restore a pipe's structural integrity and seal out groundwater. They minimize diameter loss and outlast any other rehab.

END CAPS

protect your CIPP investment



Quick-Lock end caps strengthen a CIPP liner at its most vulnerable points—the ends. Stronger and easier to install than other end caps, they're a must-have insurance policy for installed CIPP.

suitable for: sanitary sewers • water lines • industrial piping

easy

simple 5-step installation:



works with any crawler
to minimize your costs

economical

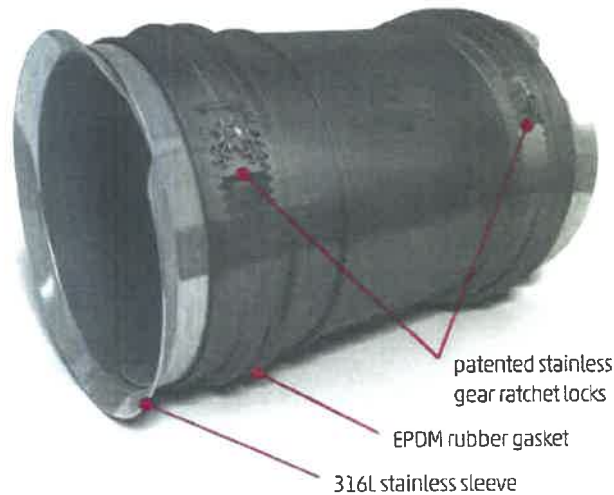
typical small-diameter installation:

time: ~30 minutes	materials: ~\$650	personnel: 2
equipment: compressor • air hose • Quick-Lock sleeve • packer • confined-space gear • 6-32" crawler with packer hitch		

durable

for maximum life:

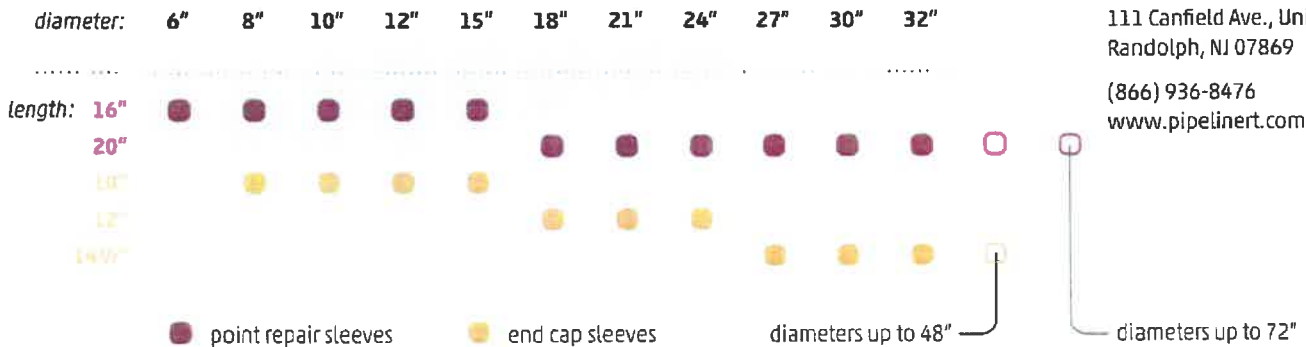
- sleeve material 316L stainless steel
- gasket material single-piece vulcanized EPDM rubber
- chemical resistance . . sewage, thinned acids, lye, aromatic and chlorinated hydrocarbons
- certification ASTM Standard F3110-14



versatile

for most any job:

- infiltration offset joints abandoned laterals
- holes cracks root intrusion



111 Canfield Ave., Unit B3
 Randolph, NJ 07869
 (866) 936-8476
 www.pipeliner.com