

This instrument prepared by and after recording please return to:

Jesse Dodson, Esq.
DLA Piper LLP (US)
203 North LaSalle Street
Suite 1900
Chicago, Illinois 60601

PINs:

06-21-308-021
06-21-308-022
06-21-308-023

This space reserved for Recorder's use only.

GRANT OF EASEMENT

REGENCY PLACE LLC, an Illinois limited liability company ("Grantor"), the owner of the following property in the City of Oakbrook Terrace, DuPage County, Illinois:

LOTS ONE, TWO AND THREE OF REGENCY PLACE SUBDIVISION, BEING A SUBDIVISION IN PART OF THE SOUTHWEST 1/4 OF SECTION 21 AND PART OF THE NORTHWEST 1/4 OF SECTION 28, ALL IN TOWNSHIP 39 NORTH, RANGE 11 EAST OF THE THIRD PRINCIPAL MERIDIAN, ACCORDING TO THE PLAT THEREOF RECORDED SEPTEMBER 7, 2005 AS DOCUMENT NO. R2005-196921, IN DUPAGE COUNTY, ILLINOIS,

hereby grants to and for the benefit of the **VILLAGE OF LOMBARD**, an Illinois municipal corporation ("Grantee"), a perpetual, non-exclusive easement for the maintenance, operation, repair and replacement of an underground watermain with all necessary appurtenances (the "Watermain") within that portion of the Property described and/or depicted on Exhibit A attached hereto (the "Easement Area").

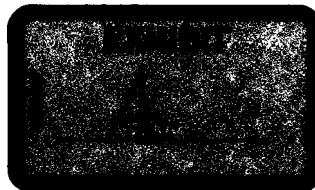
IN WITNESS WHEREOF, Grantor has caused this Grant of Easement to be executed and delivered as of July 28, 2010.

REGENCY PLACE, L.L.C.

By: M&R Regency Place, LLC, Managing Member

By: The Rossi Group, L.L.C., its Managing Member

By: 
Name: Anthony R. Rossi, Sr.
Its: Manager



STATE OF ILLINOIS)
) SS
COUNTY OF COOK)

I, the undersigned, a Notary Public in and for the said County and State aforesaid, do hereby certify that Anthony R. Rossi, Sr., Manager of the Managing Member of the Managing Member of Regency Place LLC, an Illinois limited liability company, personally known to me to be the same person whose name is subscribed to the foregoing instrument, appeared before me this day in person and acknowledged that he signed and delivered said instrument as his own free and voluntary act and as the free and voluntary act of said limited liability company for the uses and purposes therein set forth.

GIVEN under my hand and notarial seal this 28 day of July, 2010.

Deborah A. Fowler
Notary Public



EXHIBIT A

EASEMENT AREA

[attached]

DESCRIPTION OF WATER MAIN EASEMENT

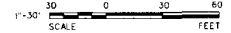
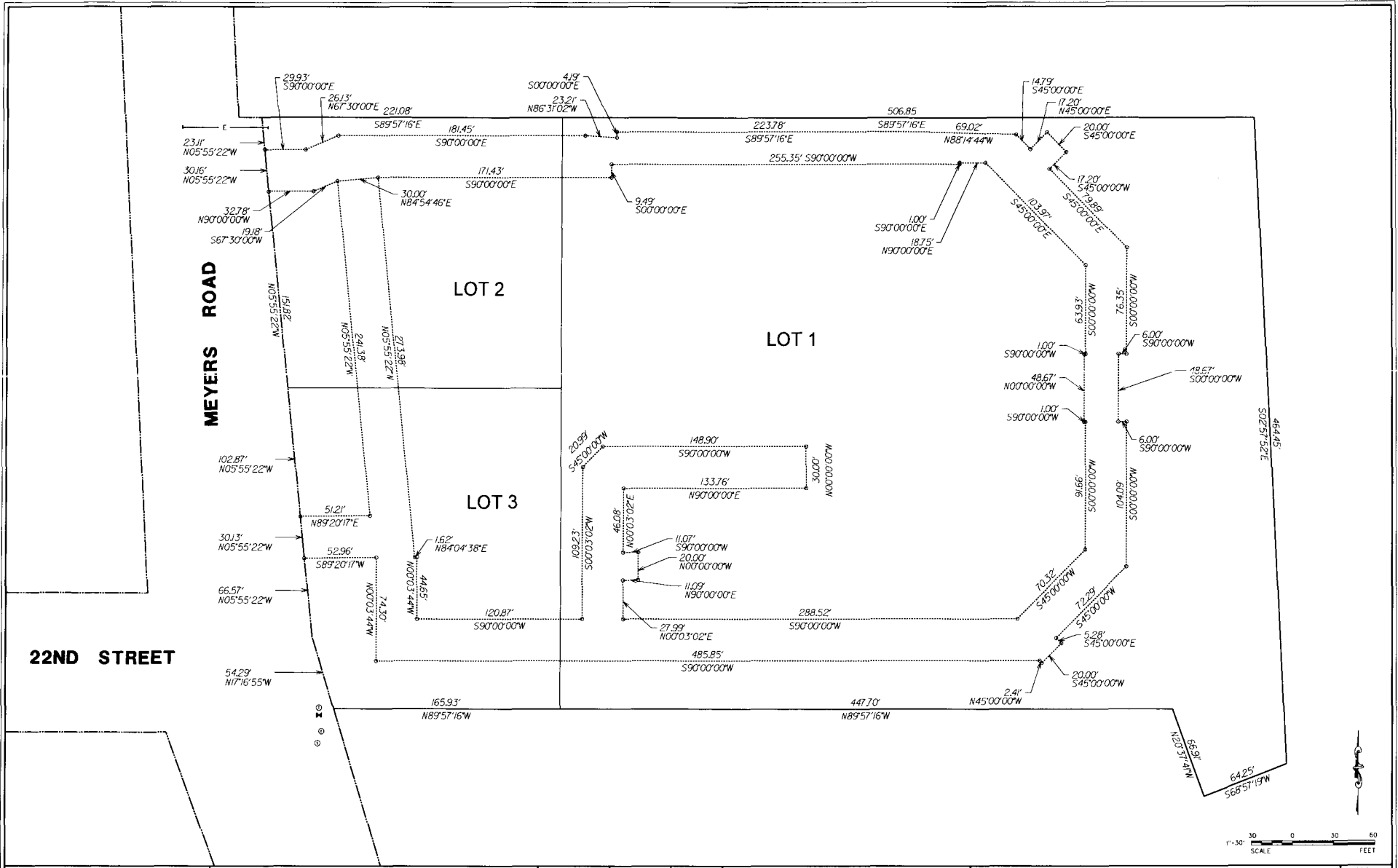
07-30-2010

THOSE PARTS OF LOTS 1, 2 AND 3 IN THE FINAL P.U.D. PLAT OF SUBDIVISION OF REGENCY PLACE, BEING A SUBDIVISION OF PART OF THE SOUTHWEST QUARTER OF SECTION 21 AND PART OF THE NORTHWEST QUARTER OF SECTION 28, ALL IN TOWNSHIP 39 NORTH, RANGE 11, EAST OF THE THIRD PRINCIPAL MERIDIAN, ACCORDING TO THE PLAT THEREOF RECORDED SEPTEMBER 7, 2005 AS DOCUMENT NUMBER R2005-196921, DESCRIBED AS FOLLOWS:

COMMENCING AT THE NORTHWEST CORNER OF SAID LOT 2; THENCE SOUTH 05 DEGREES 55 MINUTES 22 SECONDS EAST ALONG THE WEST LINE OF SAID LOT 2, A DISTANCE OF 23.11 FEET TO THE PLACE OF BEGINNING;

THENCE SOUTH 90 DEGREES 00 MINUTES 00 SECONDS EAST, 29.93 FEET;
THENCE NORTH 67 DEGREES 30 MINUTES 00 SECONDS EAST, 26.13 FEET;
THENCE SOUTH 90 DEGREES 00 MINUTES 00 SECONDS EAST, 181.45 FEET;
THENCE SOUTH 86 DEGREES 31 MINUTES 02 SECONDS EAST, 23.21 FEET;
THENCE NORTH 00 DEGREES 00 MINUTES 00 SECONDS WEST, 4.19 FEET;
THENCE SOUTH 89 DEGREES 57 MINUTES 16 SECONDS EAST, 223.78 FEET;
THENCE SOUTH 88 DEGREES 14 MINUTES 44 SECONDS EAST, 69.02 FEET;
THENCE SOUTH 45 DEGREES 00 MINUTES 00 SECONDS EAST, 14.79 FEET;
THENCE NORTH 45 DEGREES 00 MINUTES 00 SECONDS EAST, 17.20 FEET;
THENCE SOUTH 45 DEGREES 00 MINUTES 00 SECONDS EAST, 20.00 FEET;
THENCE SOUTH 45 DEGREES 00 MINUTES 00 SECONDS WEST, 17.20 FEET;
THENCE SOUTH 45 DEGREES 00 MINUTES 00 SECONDS EAST, 79.89 FEET;
THENCE SOUTH 00 DEGREES 00 MINUTES 00 SECONDS WEST, 76.35 FEET;
THENCE SOUTH 90 DEGREES 00 MINUTES 00 SECONDS WEST, 6.00 FEET;
THENCE SOUTH 00 DEGREES 00 MINUTES 00 SECONDS WEST, 48.67 FEET;
THENCE NORTH 90 DEGREES 00 MINUTES 00 SECONDS EAST, 6.00 FEET;
THENCE SOUTH 00 DEGREES 00 MINUTES 00 SECONDS WEST, 104.09 FEET;
THENCE SOUTH 45 DEGREES 00 MINUTES 00 SECONDS WEST, 72.29 FEET;
THENCE SOUTH 45 DEGREES 00 MINUTES 00 SECONDS EAST, 5.28 FEET;
THENCE SOUTH 45 DEGREES 00 MINUTES 00 SECONDS WEST, 20.00 FEET;
THENCE NORTH 45 DEGREES 00 MINUTES 00 SECONDS WEST, 2.41 FEET;
THENCE SOUTH 90 DEGREES 00 MINUTES 00 SECONDS WEST, 485.85 FEET;
THENCE NORTH 00 DEGREES 03 MINUTES 44 SECONDS WEST, 74.30 FEET;
THENCE SOUTH 89 DEGREES 20 MINUTES 17 SECONDS WEST, 52.96 FEET;
THENCE NORTH 05 DEGREES 55 MINUTES 22 SECONDS WEST, 30.13 FEET;
THENCE NORTH 89 DEGREES 20 MINUTES 17 SECONDS EAST, 51.21 FEET;
THENCE NORTH 05 DEGREES 55 MINUTES 22 SECONDS WEST, 241.38 FEET;
THENCE NORTH 84 DEGREES 54 MINUTES 46 SECONDS EAST, 30.00 FEET;
THENCE SOUTH 05 DEGREES 55 MINUTES 22 SECONDS EAST, 273.98 FEET;

THENCE NORTH 84 DEGREES 04 MINUTES 38 SECONDS EAST, 1.62 FEET;
THENCE SOUTH 00 DEGREES 03 MINUTES 44 SECONDS EAST, 44.65 FEET;
THENCE NORTH 90 DEGREES 00 MINUTES 00 SECONDS EAST, 120.87 FEET;
THENCE NORTH 00 DEGREES 03 MINUTES 02 SECONDS EAST, 109.23 FEET;
THENCE NORTH 45 DEGREES 00 MINUTES 00 SECONDS EAST, 20.99 FEET;
THENCE NORTH 90 DEGREES 00 MINUTES 00 SECONDS EAST, 148.90 FEET;
THENCE SOUTH 00 DEGREES 00 MINUTES 00 SECONDS EAST, 30.00 FEET;
THENCE SOUTH 90 DEGREES 00 MINUTES 00 SECONDS WEST, 133.76 FEET;
THENCE SOUTH 00 DEGREES 03 MINUTES 02 SECONDS WEST, 46.08 FEET;
THENCE NORTH 90 DEGREES 00 MINUTES 00 SECONDS EAST, 11.07 FEET;
THENCE SOUTH 00 DEGREES 00 MINUTES 00 SECONDS EAST, 20.00 FEET;
THENCE SOUTH 90 DEGREES 00 MINUTES 00 SECONDS WEST, 11.09 FEET;
THENCE SOUTH 00 DEGREES 03 MINUTES 02 SECONDS WEST, 27.99 FEET;
THENCE NORTH 90 DEGREES 00 MINUTES 00 SECONDS EAST, 288.52 FEET;
THENCE NORTH 45 DEGREES 00 MINUTES 00 SECONDS EAST, 70.32 FEET;
THENCE NORTH 00 DEGREES 00 MINUTES 00 SECONDS EAST, 91.66 FEET;
THENCE SOUTH 90 DEGREES 00 MINUTES 00 SECONDS WEST, 1.00 FEET;
THENCE NORTH 00 DEGREES 00 MINUTES 00 SECONDS WEST, 48.67 FEET;
THENCE NORTH 90 DEGREES 00 MINUTES 00 SECONDS EAST, 1.00 FEET;
THENCE NORTH 00 DEGREES 00 MINUTES 00 SECONDS EAST, 63.93 FEET;
THENCE NORTH 45 DEGREES 00 MINUTES 00 SECONDS WEST, 103.97 FEET;
THENCE SOUTH 90 DEGREES 00 MINUTES 00 SECONDS WEST, 18.75 FEET;
THENCE SOUTH 00 DEGREES 00 MINUTES 00 SECONDS EAST, 1.00 FEET;
THENCE SOUTH 90 DEGREES 00 MINUTES 00 SECONDS WEST, 255.35 FEET;
THENCE SOUTH 00 DEGREES 00 MINUTES 00 SECONDS EAST, 9.49 FEET;
THENCE NORTH 90 DEGREES 00 MINUTES 00 SECONDS WEST, 171.43 FEET;
THENCE SOUTH 84 DEGREES 54 MINUTES 46 SECONDS WEST, 30.00 FEET;
THENCE SOUTH 67 DEGREES 30 MINUTES 00 SECONDS WEST, 19.18 FEET;
THENCE NORTH 90 DEGREES 00 MINUTES 00 SECONDS WEST, 32.78 FEET;
THENCE NORTH 05 DEGREES 55 MINUTES 22 SECONDS WEST, 30.16 FEET
TO THE PLACE OF BEGINNING, IN DUPAGE COUNTY, ILLINOIS.



V
Engineers
Scientists
Surveyors

7325 Jones Avenue, Suite 1100
 Woodridge, IL 60517
 630.724.5280 voice
 630.724.5352 fax
 v3consultants.com

REVISIONS					
NO.	DATE	DESCRIPTION	NO.	DATE	DESCRIPTION

SEAL

PROJ. NO.
 99055BM-SD4

DESIGNED BY
 ANH

DRAWN BY
 JMD

CHECKED BY
 ANH

DATE
 July 6, 2010

SCALE
 1" = 30'

REGENCY PLACE

PROJ. NAME
 OAKBROOK TERRACE

ILLINOIS

WATERMAIN EASEMENT EXHIBIT

DRAWING NO.
EX A

99055BM-SD4 WATERMAIN EASEMENT EXHIBIT