


VILLAGE OF LOMBARD
REQUEST FOR BOARD OF TRUSTEES ACTION
For Inclusion on Board Agenda

Resolution or Ordinance (Blue) X Waiver of First Requested
 X Recommendations of Boards, Commissions & Committees (Green)
Other Business (Pink)

TO: PRESIDENT AND BOARD OF TRUSTEES
FROM: Scott Niehaus, Village Manager
DATE: April 23, 2024 (COW) (B of T) **Date:** May 16, 2024
TITLE: Recommendations from the Public Safety and Transportation Committee
SUBMITTED BY: Carl Goldsmith, Director of Public Works 

BACKGROUND/POLICY IMPLICATIONS:
The Public Works Department recommends the prohibition of parking on the north side of Central Avenue, from Stewart Avenue to Grace Street, adjacent to Southland Park. This will increase safety by providing better access to emergency vehicles and local drivers along Central Avenue.

The Transportation and Safety Committee reviewed this issue in their May 1, 2024 meeting.

FISCAL IMPACT/FUNDING SOURCE:
Time and Materials

Review (as necessary):
Village Attorney X _____ Date _____
Finance Director X _____ Date _____
Village Manager X _____ Date _____

NOTE: All materials must be submitted to and approved by the Village Manager's Office by 12:00 noon, Wednesday, prior to the Agenda Distribution.



April 24, 2024

TO: Village President and Board of Trustees
FROM: Carl Goldsmith, Director of Public Works *CG*
SUBJECT: **Amending Parking Restrictions on Central Ave., Stewart Ave. to Grace St.**

Request

Staff recommends that the Village amend Schedule VII of the Traffic Code to restrict parking on the north side of Central Avenue from Stewart Avenue to Grace Street.

Background

Central Avenue is directly north of Southland Park from Stewart Avenue to Grace Street. It is an east-west roadway with a pavement width of approximately 24 feet. For reference, Wilson Avenue is approximately 27 feet wide in the area adjacent to Glenbard East High School. Currently, parking is permitted on both the north and south side of Central Avenue.

The demand for parking comes from the use of the Southland Park, overflow parking from the Village Hall complex, and residential uses. There is minimal use of this parking for Glenbard East students as this location is over a half a mile walk from the school entrances.

Additionally, Lombard Park District is planning an improvement to Southland Park which includes the addition of 45 parking spaces on the south end of the park. See Exhibit A.

Analysis

Staff observed that when there is parking on both sides of the roadway, that it is difficult for standard vehicles to traverse the roadway. This is compounded when larger vehicles, such as emergency vehicles or large Public Works trucks, need to use Central Avenue. See Exhibit B for photographs.

By restricting parking to only one side of the street, this will increase safety as well as efficiency for emergency vehicles.

This issue was discussed at the April 3, 2024 Public Safety & Transportation Committee. There was agreement that restricting parking on one side of the street was a prudent measure. However, the Committee requested additional information regarding the decision of restrictions on the north or south side of the street.

The aspects mentioned in the April meeting that we will expand on in this memo are:

1. Parking spaces available,
2. Driveway sight lines,
3. Proximity to fire hydrants, and
4. Resident feedback.

1. Parking spaces available

Illinois State Code (625 ILCS 5/11-1303) gives us guidance on state-wide parking prohibitions, which will aid us in estimating how much parking would be available.

(625 ILCS 5/11-1303, from Ch. 95 1/2, par. 11-1303)

“Sec. 11-1303. Stopping, standing or parking prohibited in specified places.

(a) Except when necessary to avoid conflict with other traffic, or in compliance with law or the directions of a police officer or official traffic-control device, no person shall:

....

2. Stand or park a vehicle, whether occupied or not, except momentarily to pick up or discharge passengers:

- a. In front of a public or private driveway;
- b. Within 15 feet of a fire hydrant;
- c. Within 20 feet of a crosswalk at an intersection;
- d. Within 30 feet upon the approach to any flashing signal, stop sign, yield sign, or traffic control signal located at the side of a roadway;”

Given those regulations, Exhibit C illustrates the available parking on each side of the street.

North Side: 15 vehicles

South Side: 31 vehicles

Staff believes that there will be sufficient parking for events at Southland Park with the existing parking available, the use of the south side of Central Avenue, and the enhancements to the park’s south parking lot.

2. Driveway sight lines

The second issue is the visibility for residents who are backing out of their driveways. Which would be a factor if parking is permitted only on the north side of the street. This is relevant as there will be sufficient demand during events like soccer games, especially when one game is ending and another is about to begin, to occupy all available parking spots on Central Avenue.

If a driver is backing up with a wall of vehicles adjacent to their driveway, it becomes difficult for the driver to see cars traveling on Central. Likewise, the cars on Central Avenue will have a difficulty seeing the car leaving the driveway. Illustrations 1 & 2 display this issue below.



Illustration 1 – Limited visibility for drivers on Central Ave. to see cars backing out

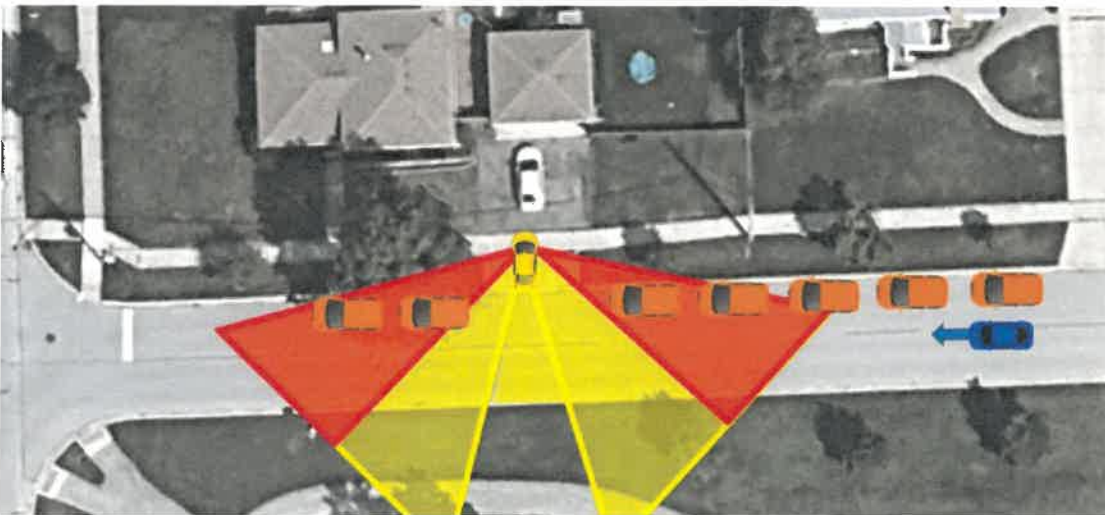


Illustration 2 – Limited visibility for the residents to see vehicles on Central Ave.

3. Proximity to fire hydrants

On Central Avenue, between Stewart and Grace, there are 2 fire hydrants on the south side of the street and none on the north side. It is important that vehicles do not block access to the hydrants.

Currently, there are no signs stating “No Parking” and there are no pavement markings or paint delineating the 15 feet on either side of the hydrants. This is the Village’s standard operating procedure as we do not paint curbs and only stripe out areas near fire hydrants when there is a striped parking lane.

Southland Park has frequently hosted soccer matches and various events over the years, with a high demand for parking on the south side of the street, and Village staff is not aware of issues with parked vehicles blocking access to the fire hydrants. It is assumed that with or without a parking restriction on the north side, that the south side should continue to function as it has over the years. Public Works staff would recommend monitoring the issue and only erecting “No Parking” signs if there is a problem in the future.

4. Resident Feedback

The Public Works Department mailed out a letter to all adjacent residents on Central Avenue who would be affected by the proposed parking restriction. This letter also gave them Public Works contact information as well as information on the May 1, 2024 Public Safety & Transportation Committee meeting when this issue would be discussed. This letter is included as Exhibit D.

As of April 24, 2024, the Public Works Department has received no feedback from residents.

Recommendation

Because of the varying times that parking is demanded and utilized (Weekday business hours for the Village Hall Complex and evening & weekend use of Southland Park), restrictions based on time would not be practical. Therefore, it is recommended to prohibit parking at all times for the north side of Central Avenue from Stewart Avenue to Grace Street. The staff recommends an ordinance amending Article XIII, SCHEDULE VII of the Lombard Village Traffic Code to add the following parking prohibition on Central Avenue:

SCHEDULE VII - PARKING PROHIBITED AT ALL TIMES ON CERTAIN STREETS

In accordance with Section 10-13-6 and when signs are erected giving notice thereof, no person shall, at any time, park a vehicle upon any of the following streets or parts of streets:

Name of Street	From	To
...
Central Ave., north side	Stewart Ave.	Grace St.
...

Southland Park - Rendering of Improvements



Central Avenue - Photographs
Near Stewart, Facing East



Picture 1 – Parking on both sides of Central Avenue



Picture 2 – Garbage Truck having to apply brakes to navigate narrow width

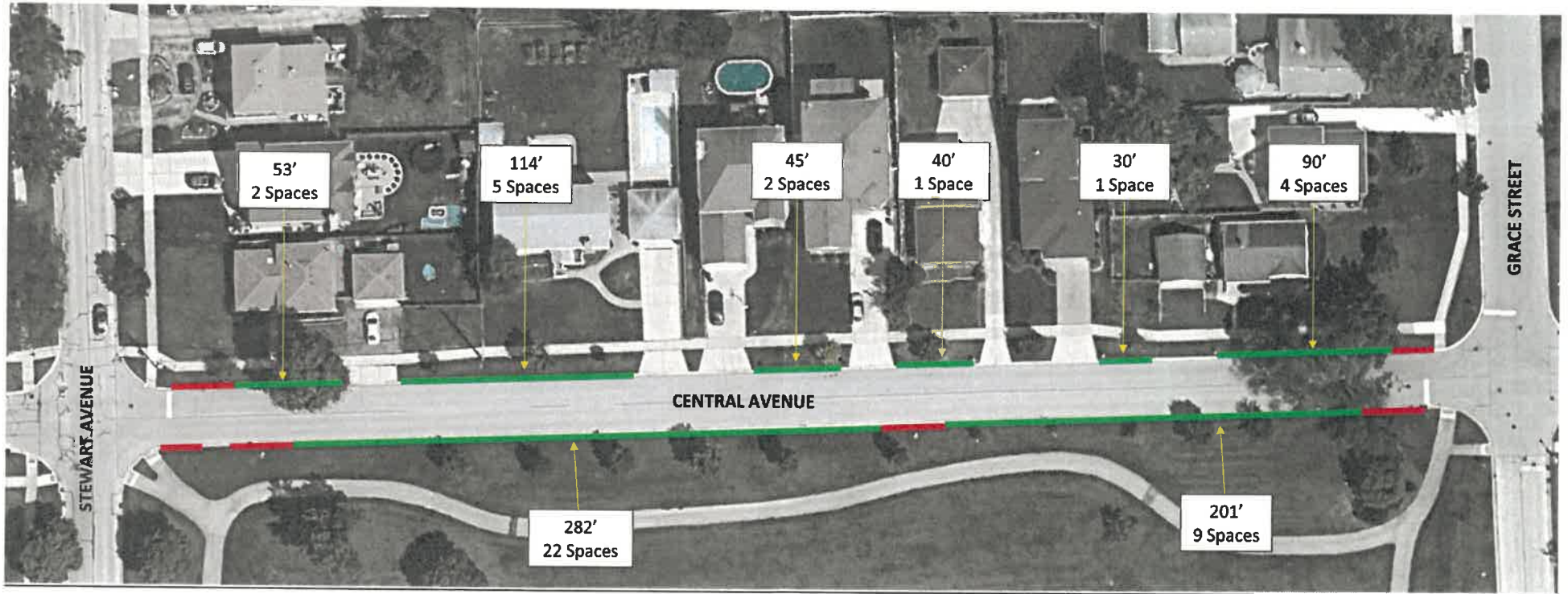


Picture 3 – Car having to stop and wait for truck to get back into WB lane



Picture 4 – Car proceeding after truck is aligned in WB lane

Parking Availability Analysis on Central Avenue – Stewart Avenue to Grace Street



Assumed Length of space for each vehicle = 22' (This is the length of stalls in the Downtown)

Total Spaces Available

North Side: 2 + 5 + 2 + 1 + 1 + 4 = 15

South Side: 22 + 9 = 31

Notes:

- 1 – Capacity will depend on the parking etiquette used. If there is 45' to park, 1 vehicle could park in the middle and not allow a 2nd car to park in that area.
 (17' vehicle in the middle leaves 14' in front & behind)
- 2 - Park District Project will add +/- 45 new spaces in parking lot at south of park.



VILLAGE OF LOMBARD

255 E. Wilson Ave.
Lombard, Illinois 60148-3926
(630) 620-5700 Fax (630) 620-8222
www.villageoflombard.org

Legistar: 240104
Exhibit D

April 16, 2024

Resident
300 E. Central Avenue
Lombard, IL 60148

Village President
Keith T. Giagnorio

Village Clerk
Elizabeth Brezinski

Trustees
Brian LaVaque, Dist. 1
Anthony Puccio, Dist. 2
Bernie Dudek, Dist. 3
Andrew Honig, Dist. 4
Daniel Militello, Dist. 5
Bob Bachner, Dist. 6

Village Manager
Scott R. Niehaus

"Our shared Vision for Lombard is a community of excellence exemplified by its government working together with residents and businesses to create a distinctive sense of spirit and an outstanding quality of life."

"The Mission of the Village of Lombard is to provide superior and responsive governmental services to the people of Lombard."

Dear Resident:

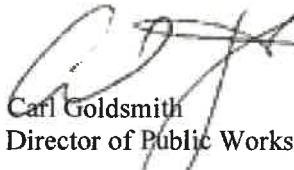
As you may be aware, the Lombard Park District will be constructing improvements at Southland Park this year. A rendering of the proposed improvements is attached. One aspect of the project includes the construction of additional parking for park visitors. This additional parking affords the Village the opportunity to address a safety concern related to emergency vehicle access along Central Avenue between Stewart Avenue and Grace Street. This action is supported by the Department of Public Works, the Police Department, and the Fire Department.

The pavement width through this segment is approximately 24 feet. Staff has observed that when there is parking on both sides of the roadway, that it is difficult for standard vehicles to traverse the roadway. This is compounded when larger vehicles, such as emergency vehicles, need to use Central Avenue. By restricting parking on the north side and allowing parking on the south side of the street, this will increase safety as well as efficiency for emergency vehicles.

The Village of Lombard's Public Safety and Transportation Committee will discuss the amendments to the Traffic Code that will prohibit parking on the north side of Central Avenue at the May 1, 2024 meeting. The meeting of the Committee will be held at 7:00 pm in the Community Room located in the Village Hall. The meeting is open to the public and we invite you to attend if you have comments or questions regarding the proposed restriction.

Should you have any questions regarding this issue, please feel free to contact me to discuss. If you would like to submit written comments on this matter, please submit them by April 24, 2024 so that the comments can be provided to the Committee. I can be contacted at 630-620-5970 or via email at goldsmthc@villageoflombard.org.

Sincerely,



Carl Goldsmith
Director of Public Works

cc: Trustee Brian LaVaque
Michael Barbier, Civil Engineer II

Ordinance No. _____

ORDINANCE AMENDING ARTICLE XIII OF THE LOMBARD TRAFFIC
CODE TO ADD PARKING PROHIBITIONS ON CENTRAL AVENUE

WHEREAS, the President and Board of Trustees of the Village of Lombard have heretofore passed and approved Ordinance 1186, An Ordinance Regulating Traffic in the Village of Lombard (hereinafter the Lombard Traffic Code); and

WHEREAS, the President and Board of Trustees of the Village of Lombard find that the Lombard Traffic Code has been amended from time to time; and

WHEREAS, the Public Safety and Transportation Committee has reviewed the appropriate traffic studies and recommends certain changes to the Lombard Traffic Code; and

WHEREAS, the Corporate Authorities of the Village of Lombard concur in the recommendation of the Transportation and Safety Committee.

NOW, THEREFORE, BE IT ORDAINED BY THE PRESIDENT AND BOARD OF TRUSTEES OF THE VILLAGE OF LOMBARD, DU PAGE COUNTY, ILLINOIS, as follows:

Section 1: That Article XIII, Schedule VII, of the Lombard Traffic Code (Ordinance 1186) be amended by adding the language as follows:

Name of Street	From	To
Central Ave., north side	Stewart Ave.	Grace St.

Section 2: That this Ordinance shall be in full force and effect from and after its passage, approval, publication in pamphlet form and the posting of appropriate signs as provided by law.

Passed on first read this ____ day of _____, 2024.

First reading waived by action of the Board of Trustees this ____ day of _____, 2024.

Passed on second read this ____ day of _____, 2024.

Ayes: _____

Nays: _____

Absent: _____

Approved this ____ day of _____, 2024.

Keith T. Giagnorio
Village President

Attest:

Elizabeth Brezinski
Village Clerk

Published by me in pamphlet form this ____ day of _____, 2024.

Elizabeth Brezinski, Village Clerk