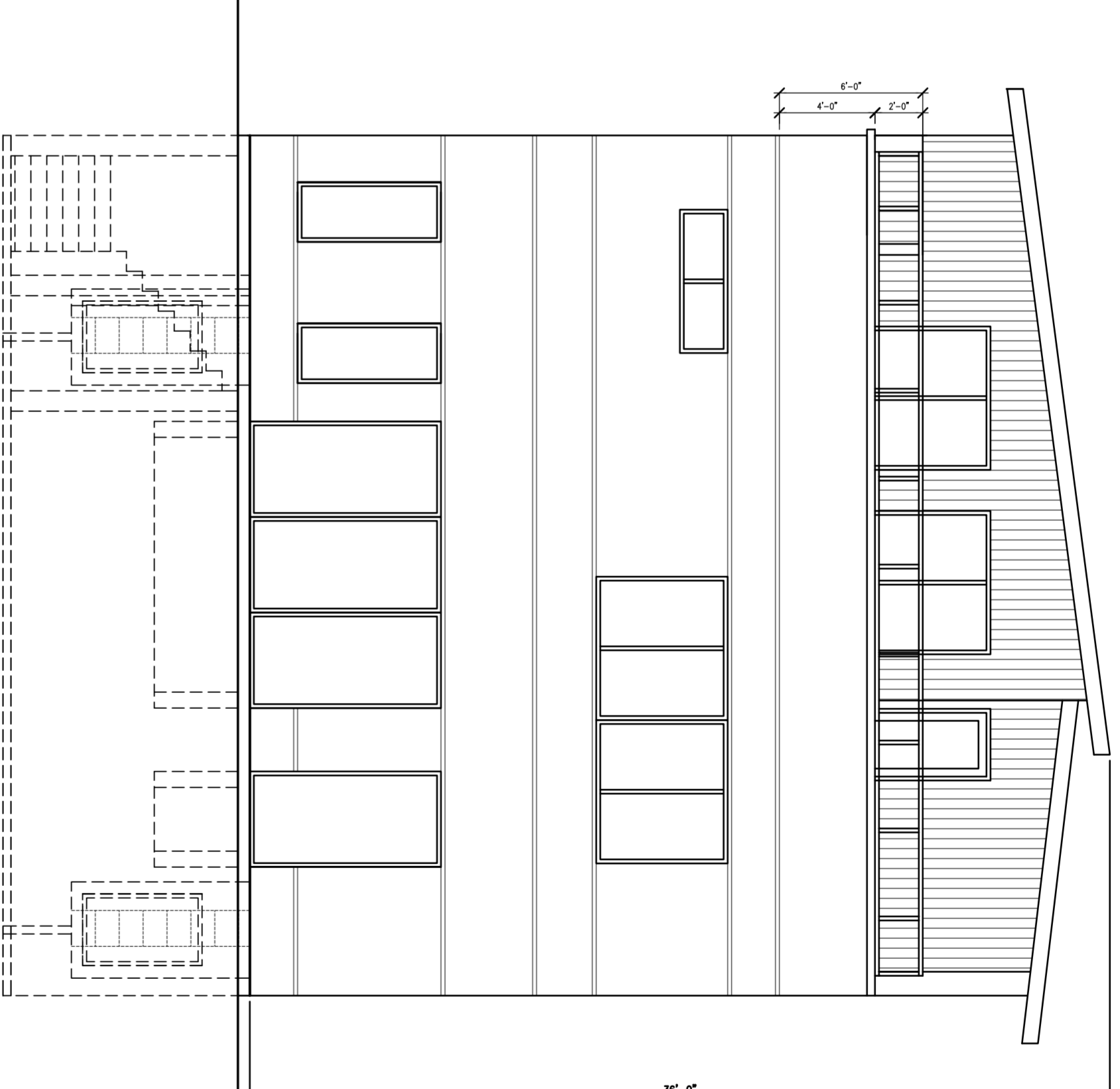
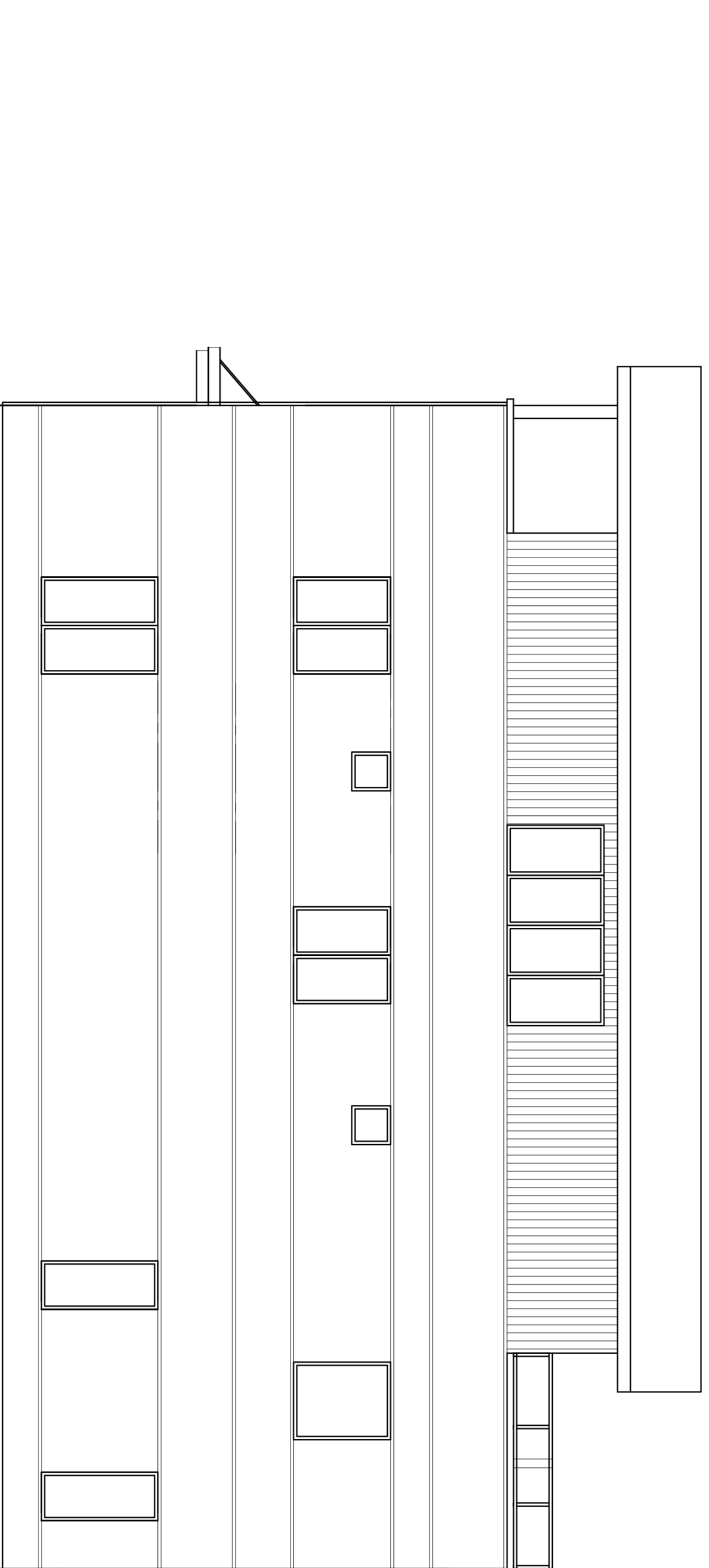


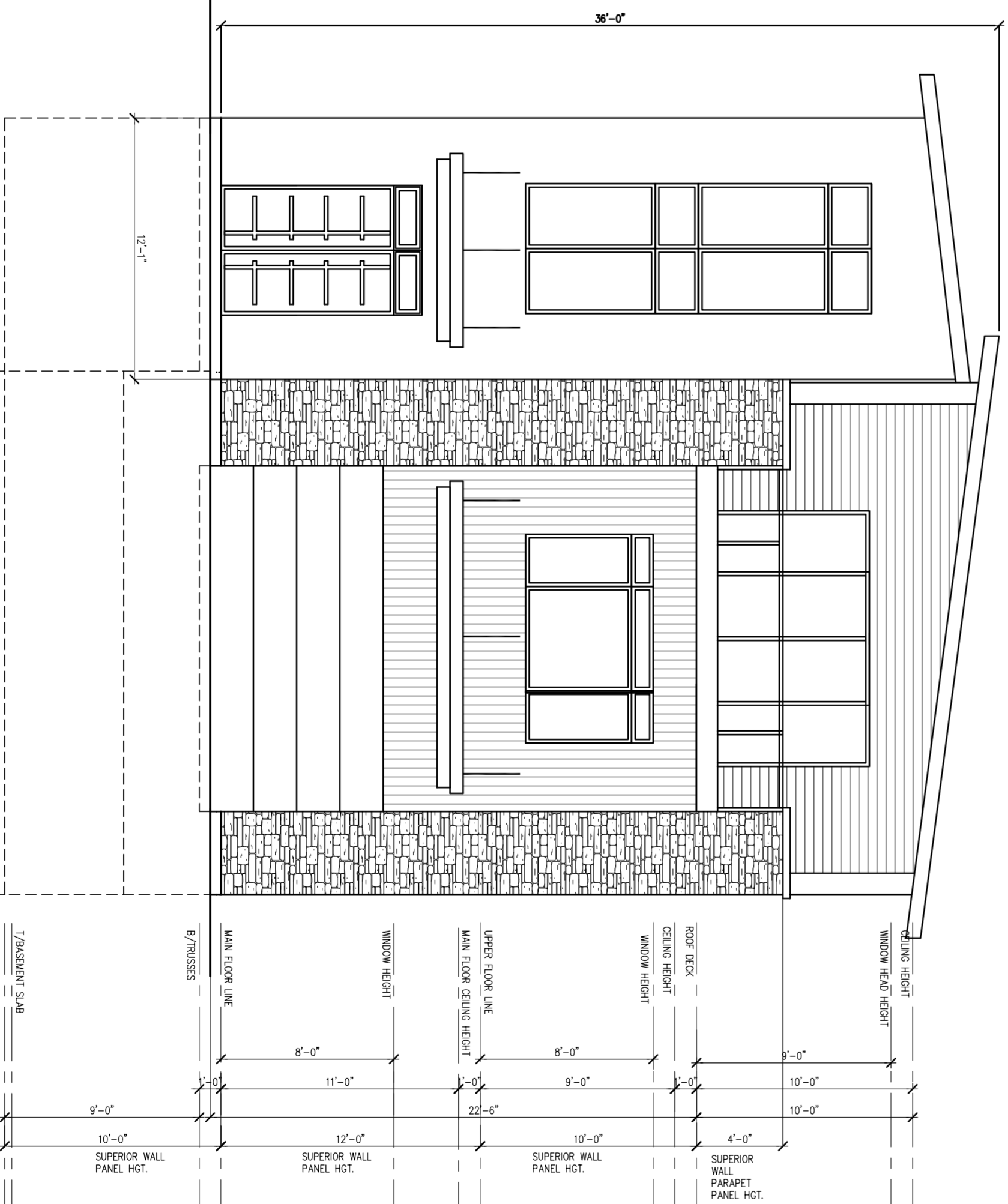
LEFT ELEVATION 36'-0" WIDE OPTION A
SCALE: 1/4" = 1'-0"



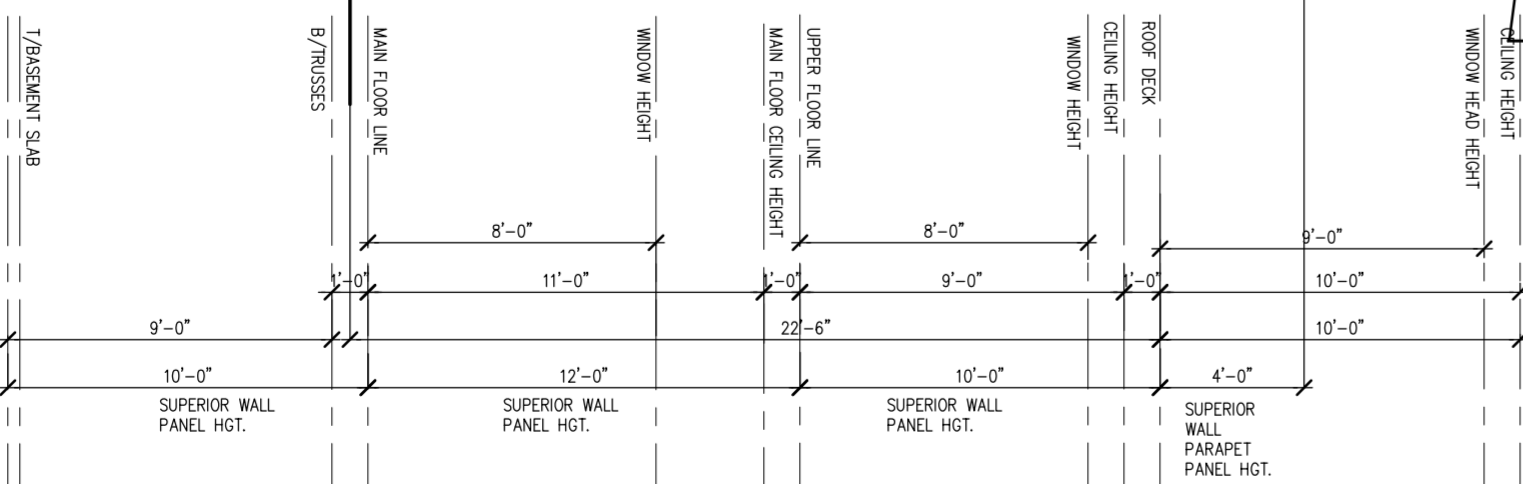
REAR ELEVATION 36'-0" WIDE OPTION A
SCALE: 1/4" = 1'-0"



RIGHT ELEVATION 36'-0" WIDE OPTION A
SCALE: 1/4" = 1'-0"



FRONT ELEVATION 36'-0" WIDE OPTION A
SCALE: 1/4" = 1'-0"



© Copyright 2016
JAKI BRANDELS ARCHITECTS, LTD.
THIS DOCUMENT IS THE PROPERTY OF
JAKI BRANDELS ARCHITECTS, LTD.
OR USED FOR ANY UNAUTHORIZED WRITTEN PERMISSION
FROM JAKI BRANDELS ARCHITECTS, LTD.

Jb
JAKI BRANDELS ARCHITECTS, LTD.
ARCHITECTS LTD.
LICENSE NO. 184.007832
1800 W HAWTHORNE
LANE SUITE 0
WEST CHICAGO,
ILLINOIS 60709
PH: (630) 592-2561
PH: (630) 592-2570
FAX: (630) 592-2370

NEW SINGLE-FAMILY HOMES
AFSAR DEVELOPERS LLC.
LOMBARD, IL
DUPAGE COUNTY

ISSUE	DATE
-------	------

SHEET TITLE
BUILDING ELEVATIONS
OPTION A

SHEET NUMBER

A-1-A

OF