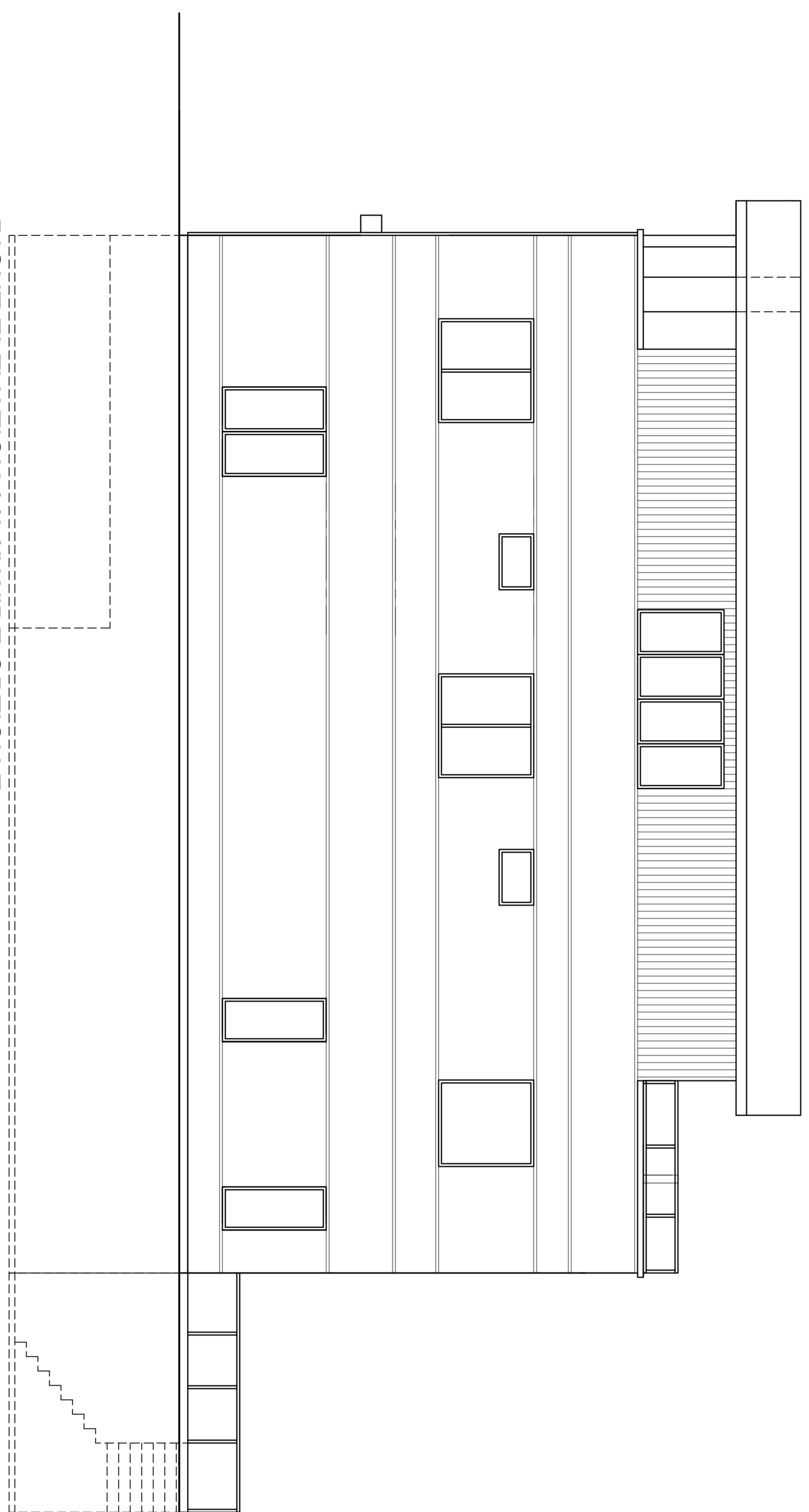
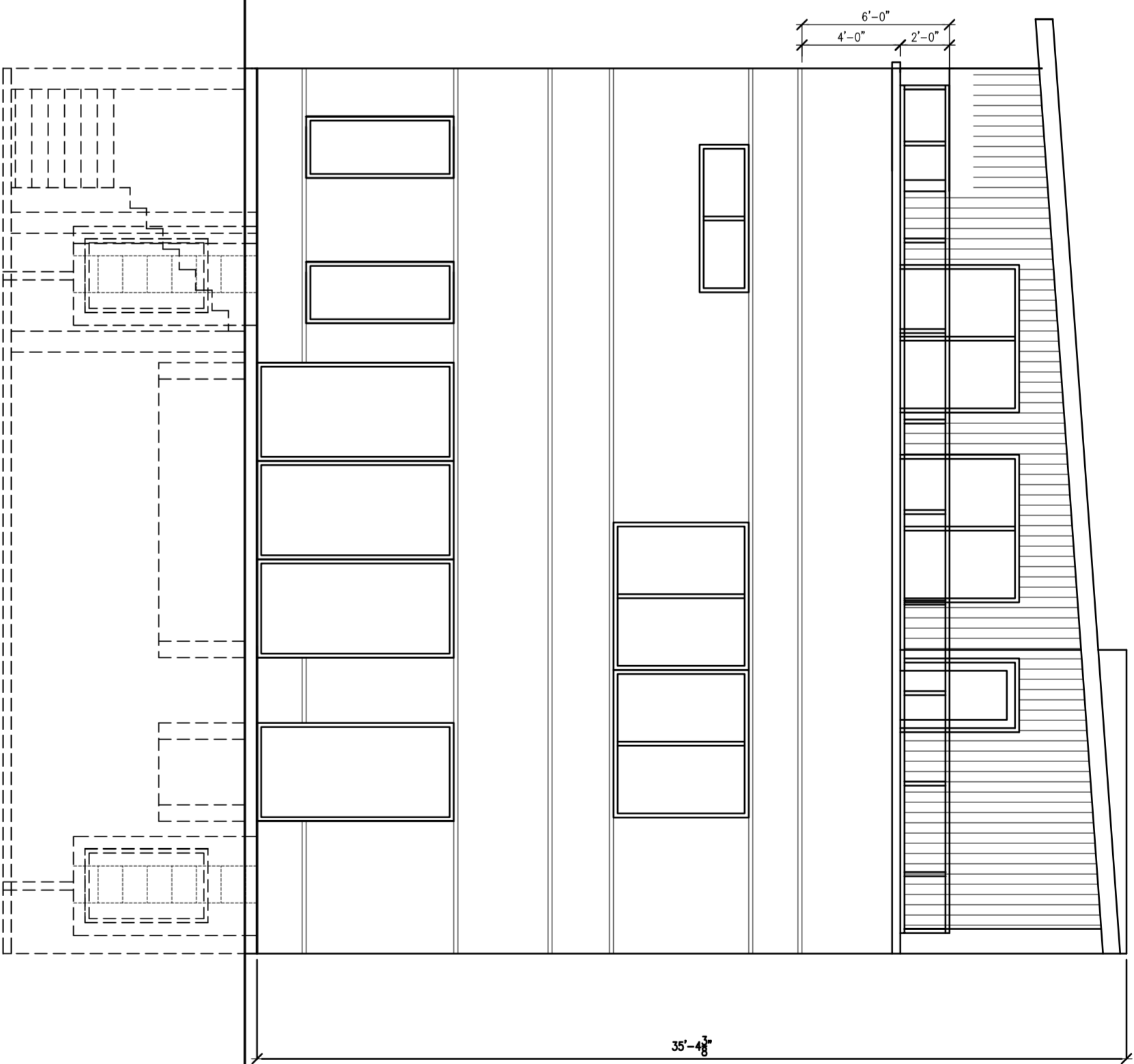


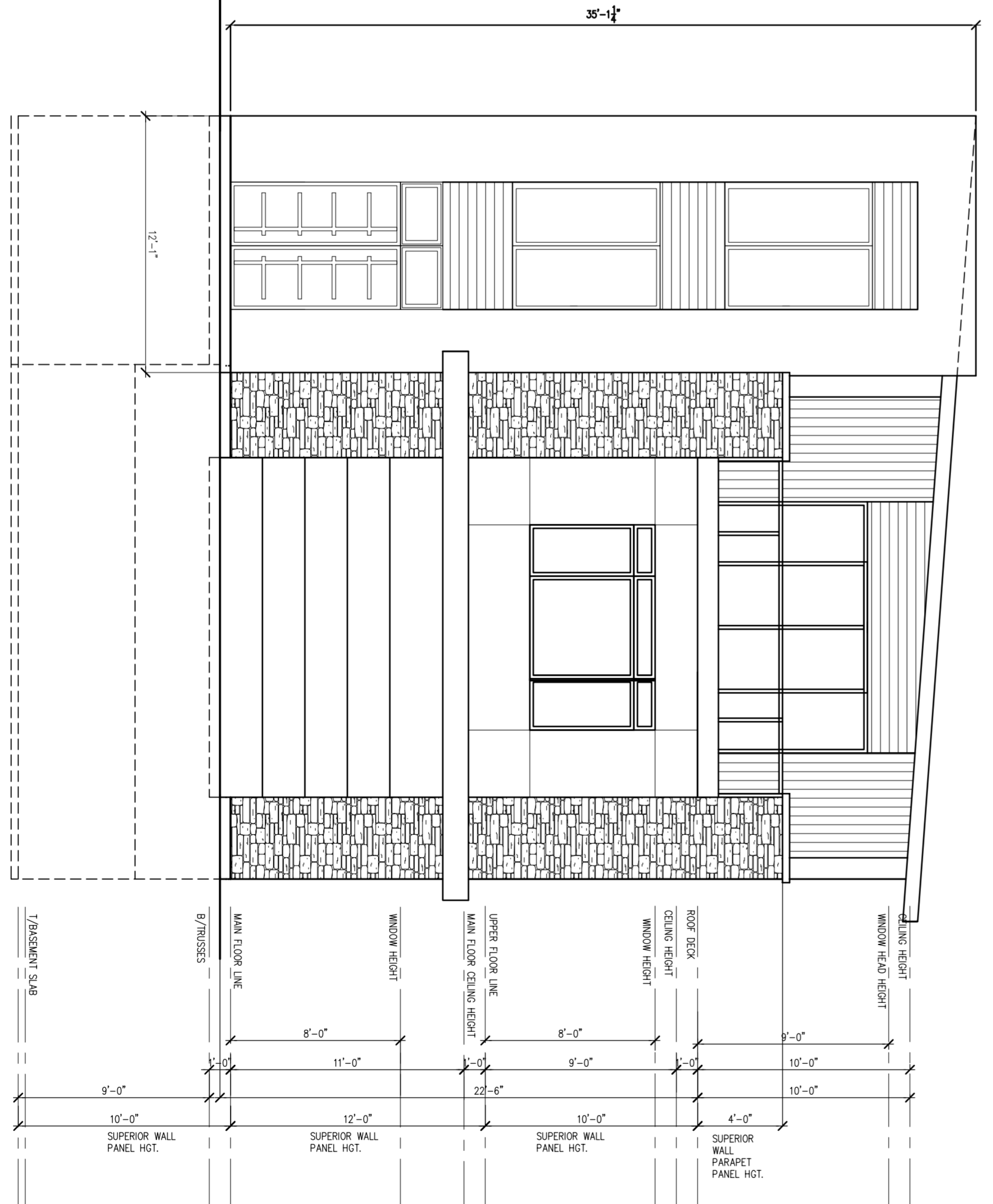
LEFT ELEVATION 36'-0" WIDE OPTION E  
SCALE: 1/4" = 1'-0"



RIGHT ELEVATION 36'-0" WIDE OPTION E  
SCALE: 1/4" = 1'-0"

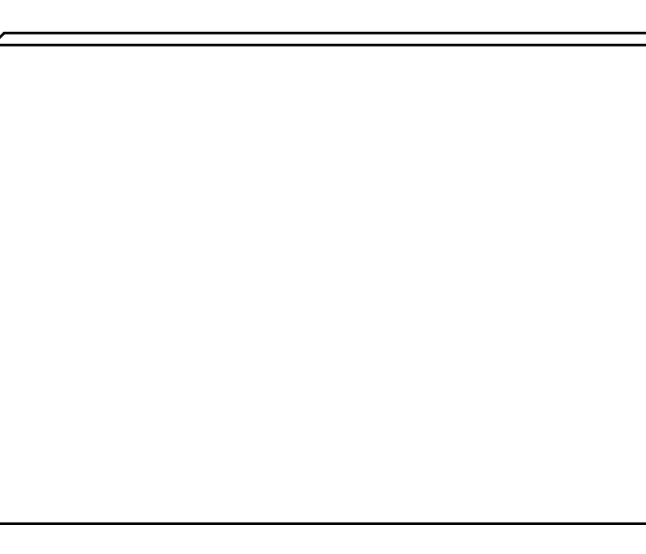


REAR ELEVATION 36'-0" WIDE OPTION E  
SCALE: 1/4" = 1'-0"



FRONT ELEVATION 36'-0" WIDE OPTION E  
SCALE: 1/4" = 1'-0"

WINDOW ROAD HEIGHT	10'-0"
MAIN FLOOR CEILING HEIGHT	8'-0"
UPPER FLOOR LINE	9'-0"
ROOF DECK CEILING HEIGHT	10'-0"
ROOF DECK WINDOW HEIGHT	4'-0"
ROOF DECK	9'-0"
MAIN FLOOR CEILING HEIGHT	22'-6"
UPPER FLOOR LINE	9'-0"
MAIN FLOOR LINE	12'-0"
WINDOW HEIGHT	8'-0"
MAIN FLOOR LINE	12'-0"
BR/BRISSES	9'-0"
LANDING SLAB	10'-0"



**J**

**JAKI-BRANDIS ARCHITECTS, LTD.**  
ARCHITECTS LTD.  
LICENSE NO. 184.007832

1800 W. HAWTHORNE  
LANE SUITE 200  
WEST CHICAGO,  
ILLINOIS 60639  
PH: (630) 582-2561  
FAX: (630) 582-2370

NEW SINGLE-FAMILY HOMES  
**AFSAR DEVELOPERS LLC.**  
LOMBARD, IL  
DUPAGE COUNTY

ISSUE	DATE

SHEET TITLE  
**BUILDING ELEVATIONS  
OPTION E**

SHEET NUMBER  
**A-1-E**  
OF